



# Full wwPDB X-ray Structure Validation Report ⓘ

Jun 12, 2024 – 02:11 PM EDT

PDB ID : 2XXG  
Title : STRUCTURE OF THE N90S MUTANT OF NITRITE REDUCTASE FROM  
ALCALIGENES XYLOSOXIDANS  
Authors : Hough, M.A.; Eady, R.R.; Hasnain, S.S.  
Deposited on : 2010-11-10  
Resolution : 1.60 Å(reported)

This is a Full wwPDB X-ray Structure Validation Report for a publicly released PDB entry.

We welcome your comments at [validation@mail.wwpdb.org](mailto:validation@mail.wwpdb.org)

A user guide is available at

<https://www.wwpdb.org/validation/2017/XrayValidationReportHelp>

with specific help available everywhere you see the ⓘ symbol.

The types of validation reports are described at

<http://www.wwpdb.org/validation/2017/FAQs#types>.

---

The following versions of software and data (see [references ⓘ](#)) were used in the production of this report:

MolProbity	:	4.02b-467
Mogul	:	2022.3.0, CSD as543be (2022)
Xtriage (Phenix)	:	1.20.1
EDS	:	2.36.2
Percentile statistics	:	20191225.v01 (using entries in the PDB archive December 25th 2019)
Refmac	:	5.8.0158
CCP4	:	7.0.044 (Gargrove)
Ideal geometry (proteins)	:	Engh & Huber (2001)
Ideal geometry (DNA, RNA)	:	Parkinson et al. (1996)
Validation Pipeline (wwPDB-VP)	:	2.36.2

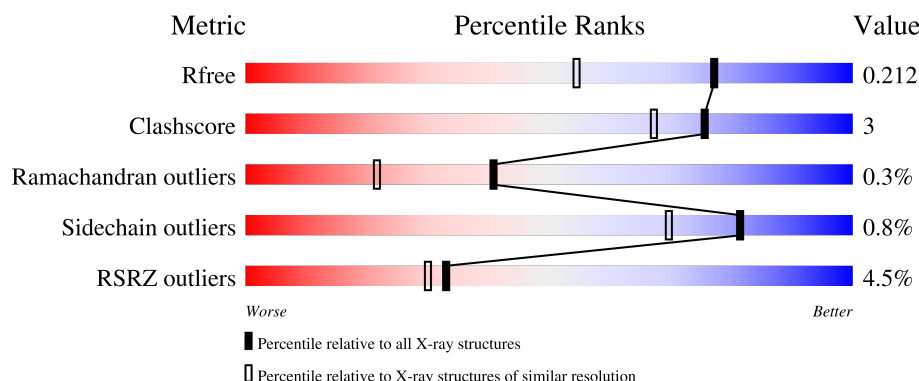
# 1 Overall quality at a glance

The following experimental techniques were used to determine the structure:

*X-RAY DIFFRACTION*

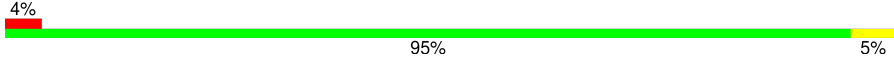
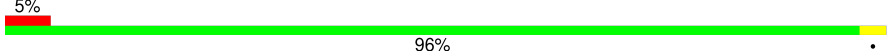
The reported resolution of this entry is 1.60 Å.

Percentile scores (ranging between 0-100) for global validation metrics of the entry are shown in the following graphic. The table shows the number of entries on which the scores are based.



Metric	Whole archive (#Entries)	Similar resolution (#Entries, resolution range(Å))
$R_{free}$	130704	3398 (1.60-1.60)
Clashscore	141614	3665 (1.60-1.60)
Ramachandran outliers	138981	3564 (1.60-1.60)
Sidechain outliers	138945	3563 (1.60-1.60)
RSRZ outliers	127900	3321 (1.60-1.60)

The table below summarises the geometric issues observed across the polymeric chains and their fit to the electron density. The red, orange, yellow and green segments of the lower bar indicate the fraction of residues that contain outliers for  $\geq 3$ , 2, 1 and 0 types of geometric quality criteria respectively. A grey segment represents the fraction of residues that are not modelled. The numeric value for each fraction is indicated below the corresponding segment, with a dot representing fractions  $\leq 5\%$ . The upper red bar (where present) indicates the fraction of residues that have poor fit to the electron density. The numeric value is given above the bar.

Mol	Chain	Length	Quality of chain
1	A	336	
1	C	336	

The following table lists non-polymeric compounds, carbohydrate monomers and non-standard residues in protein, DNA, RNA chains that are outliers for geometric or electron-density-fit criteria:

Mol	Type	Chain	Res	Chirality	Geometry	Clashes	Electron density
5	PEG	C	1337	-	-	X	-

## 2 Entry composition [i](#)

There are 7 unique types of molecules in this entry. The entry contains 5903 atoms, of which 0 are hydrogens and 0 are deuteriums.

In the tables below, the ZeroOcc column contains the number of atoms modelled with zero occupancy, the AltConf column contains the number of residues with at least one atom in alternate conformation and the Trace column contains the number of residues modelled with at most 2 atoms.

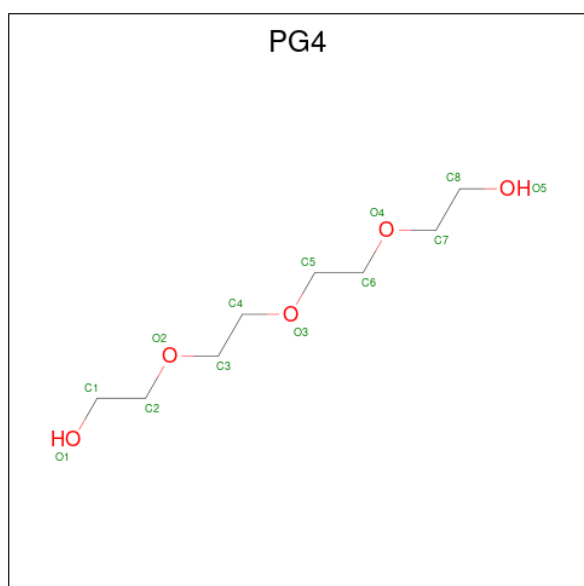
- Molecule 1 is a protein called DISSIMILATORY COPPER-CONTAINING NITRITE REDUCTASE.

Mol	Chain	Residues	Atoms					ZeroOcc	AltConf	Trace
1	A	335	Total	C	N	O	S	0	6	1
			2573	1640	442	479	12			
1	C	335	Total	C	N	O	S	0	4	0
			2571	1638	442	479	12			

There are 2 discrepancies between the modelled and reference sequences:

Chain	Residue	Modelled	Actual	Comment	Reference
A	90	SER	ASN	engineered mutation	UNP O68601
C	90	SER	ASN	engineered mutation	UNP O68601

- Molecule 2 is TETRAETHYLENE GLYCOL (three-letter code: PG4) (formula: C<sub>8</sub>H<sub>18</sub>O<sub>5</sub>).



Mol	Chain	Residues	Atoms			ZeroOcc	AltConf
2	A	1	Total	C	O	0	0
			13	8	5		

*Continued on next page...*

*Continued from previous page...*

Mol	Chain	Residues	Atoms			ZeroOcc	AltConf
2	C	1	Total	C	O	0	0
			13	8	5		

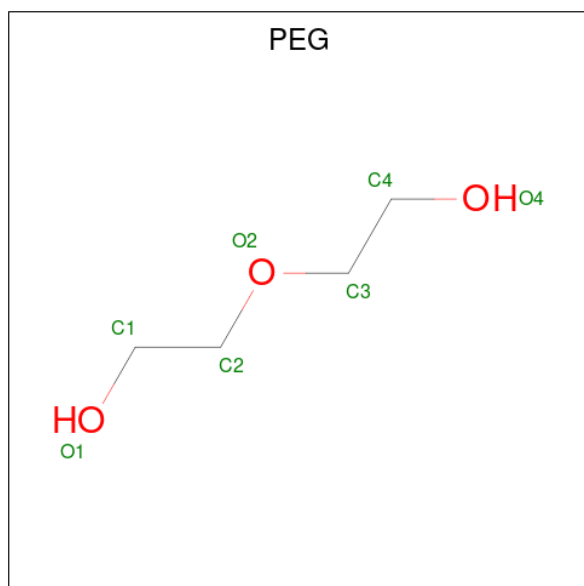
- Molecule 3 is COPPER (II) ION (three-letter code: CU) (formula: Cu).

Mol	Chain	Residues	Atoms			ZeroOcc	AltConf
3	A	2	Total	Cu		0	0
			2	2			
3	C	2	Total	Cu		0	0
			2	2			

- Molecule 4 is ZINC ION (three-letter code: ZN) (formula: Zn).

Mol	Chain	Residues	Atoms			ZeroOcc	AltConf
4	A	2	Total	Zn		0	0
			2	2			
4	C	2	Total	Zn		0	0
			2	2			

- Molecule 5 is DI(HYDROXYETHYL)ETHER (three-letter code: PEG) (formula: C<sub>4</sub>H<sub>10</sub>O<sub>3</sub>).



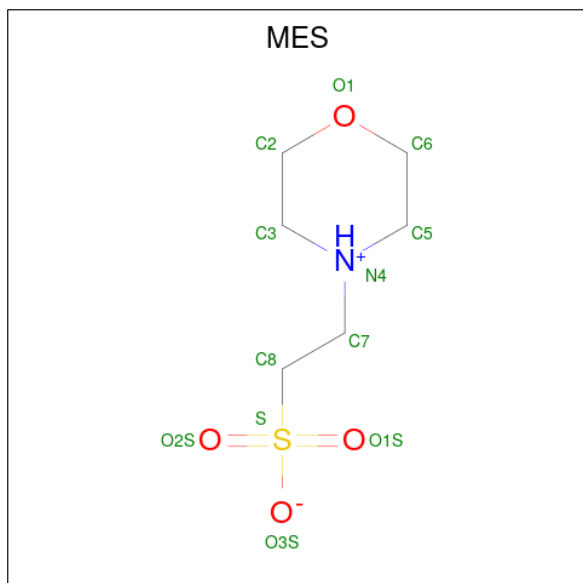
Mol	Chain	Residues	Atoms			ZeroOcc	AltConf
5	A	1	Total	C	O	0	0
			7	4	3		
5	A	1	Total	C	O	0	0
			7	4	3		

*Continued on next page...*

Continued from previous page...

Mol	Chain	Residues	Atoms			ZeroOcc	AltConf
5	C	1	Total	C	O	0	0
			7	4	3		
5	C	1	Total	C	O	0	0
			7	4	3		

- Molecule 6 is 2-(N-MORPHOLINO)-ETHANESULFONIC ACID (three-letter code: MES) (formula:  $C_6H_{13}NO_4S$ ).



Mol	Chain	Residues	Atoms					ZeroOcc	AltConf
6	A	1	Total	C	N	O	S	0	0
			12	6	1	4	1		
6	A	1	Total	C	N	O	S	0	0
			12	6	1	4	1		
6	C	1	Total	C	N	O	S	0	0
			12	6	1	4	1		
6	C	1	Total	C	N	O	S	0	0
			12	6	1	4	1		

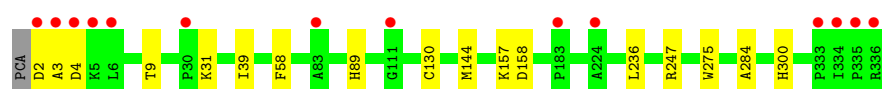
- Molecule 7 is water.

Mol	Chain	Residues	Atoms		ZeroOcc	AltConf
7	A	340	Total	O	0	0
			340	340		
7	C	309	Total	O	0	0
			309	309		

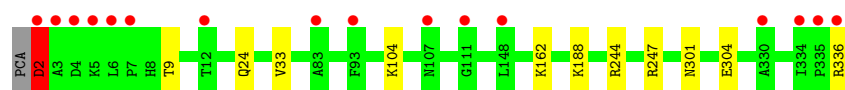
### 3 Residue-property plots [i](#)

These plots are drawn for all protein, RNA, DNA and oligosaccharide chains in the entry. The first graphic for a chain summarises the proportions of the various outlier classes displayed in the second graphic. The second graphic shows the sequence view annotated by issues in geometry and electron density. Residues are color-coded according to the number of geometric quality criteria for which they contain at least one outlier: green = 0, yellow = 1, orange = 2 and red = 3 or more. A red dot above a residue indicates a poor fit to the electron density ( $RSRZ > 2$ ). Stretches of 2 or more consecutive residues without any outlier are shown as a green connector. Residues present in the sample, but not in the model, are shown in grey.

- Molecule 1: DISSIMILATORY COPPER-CONTAINING NITRITE REDUCTASE



- Molecule 1: DISSIMILATORY COPPER-CONTAINING NITRITE REDUCTASE



## 4 Data and refinement statistics

Property	Value	Source
Space group	H 3	Depositor
Cell constants a, b, c, $\alpha$ , $\beta$ , $\gamma$	89.55Å 89.55Å 287.68Å 90.00° 90.00° 120.00°	Depositor
Resolution (Å)	29.16 – 1.60 29.16 – 1.60	Depositor EDS
% Data completeness (in resolution range)	93.7 (29.16-1.60) 86.2 (29.16-1.60)	Depositor EDS
$R_{merge}$	0.07	Depositor
$R_{sym}$	(Not available)	Depositor
$\langle I/\sigma(I) \rangle$ <sup>1</sup>	1.79 (at 1.60Å)	Xtriage
Refinement program	REFMAC 5.5.0109	Depositor
R, $R_{free}$	0.168 , 0.211 0.171 , 0.212	Depositor DCC
$R_{free}$ test set	4900 reflections (5.00%)	wwPDB-VP
Wilson B-factor (Å <sup>2</sup> )	17.6	Xtriage
Anisotropy	0.427	Xtriage
Bulk solvent $k_{sol}$ (e/Å <sup>3</sup> ), $B_{sol}$ (Å <sup>2</sup> )	0.38 , 62.9	EDS
L-test for twinning <sup>2</sup>	$\langle  L  \rangle = 0.47$ , $\langle L^2 \rangle = 0.30$	Xtriage
Estimated twinning fraction	0.038 for -h-k,k,-l	Xtriage
$F_o, F_c$ correlation	0.97	EDS
Total number of atoms	5903	wwPDB-VP
Average B, all atoms (Å <sup>2</sup> )	23.0	wwPDB-VP

Xtriage's analysis on translational NCS is as follows: *The analyses of the Patterson function reveals a significant off-origin peak that is 80.56 % of the origin peak, indicating pseudo-translational symmetry. The chance of finding a peak of this or larger height randomly in a structure without pseudo-translational symmetry is equal to 4.3513e-07. The detected translational NCS is most likely also responsible for the elevated intensity ratio.*

<sup>1</sup>Intensities estimated from amplitudes.

<sup>2</sup>Theoretical values of  $\langle |L| \rangle$ ,  $\langle L^2 \rangle$  for acentric reflections are 0.5, 0.333 respectively for untwinned datasets, and 0.375, 0.2 for perfectly twinned datasets.



## 5 Model quality

### 5.1 Standard geometry

Bond lengths and bond angles in the following residue types are not validated in this section: PEG, ZN, PG4, CU, MES

The Z score for a bond length (or angle) is the number of standard deviations the observed value is removed from the expected value. A bond length (or angle) with  $|Z| > 5$  is considered an outlier worth inspection. RMSZ is the root-mean-square of all Z scores of the bond lengths (or angles).

Mol	Chain	Bond lengths		Bond angles	
		RMSZ	$\# Z  > 5$	RMSZ	$\# Z  > 5$
1	A	0.69	0/2659	0.77	0/3626
1	C	0.69	0/2651	0.78	2/3613 (0.1%)
All	All	0.69	0/5310	0.77	2/7239 (0.0%)

Chiral center outliers are detected by calculating the chiral volume of a chiral center and verifying if the center is modelled as a planar moiety or with the opposite hand. A planarity outlier is detected by checking planarity of atoms in a peptide group, atoms in a mainchain group or atoms of a sidechain that are expected to be planar.

Mol	Chain	#Chirality outliers	#Planarity outliers
1	A	0	1

There are no bond length outliers.

All (2) bond angle outliers are listed below:

Mol	Chain	Res	Type	Atoms	Z	Observed( $^{\circ}$ )	Ideal( $^{\circ}$ )
1	C	2	ASP	CB-CA-C	-6.07	98.27	110.40
1	C	244	ARG	NE-CZ-NH2	-6.07	117.27	120.30

There are no chirality outliers.

All (1) planarity outliers are listed below:

Mol	Chain	Res	Type	Group
1	A	300	HIS	Peptide

### 5.2 Too-close contacts

In the following table, the Non-H and H(model) columns list the number of non-hydrogen atoms and hydrogen atoms in the chain respectively. The H(added) column lists the number of hydrogen

atoms added and optimized by MolProbity. The Clashes column lists the number of clashes within the asymmetric unit, whereas Symm-Clashes lists symmetry-related clashes.

Mol	Chain	Non-H	H(model)	H(added)	Clashes	Symm-Clashes
1	A	2573	0	2513	10	0
1	C	2571	0	2512	18	0
2	A	13	0	18	0	0
2	C	13	0	18	0	0
3	A	2	0	0	0	0
3	C	2	0	0	0	0
4	A	2	0	0	0	0
4	C	2	0	0	0	0
5	A	14	0	20	0	0
5	C	14	0	20	15	0
6	A	24	0	24	0	0
6	C	24	0	24	0	0
7	A	340	0	0	1	0
7	C	309	0	0	10	1
All	All	5903	0	5149	32	1

The all-atom clashscore is defined as the number of clashes found per 1000 atoms (including hydrogen atoms). The all-atom clashscore for this structure is 3.

All (32) close contacts within the same asymmetric unit are listed below, sorted by their clash magnitude.

Atom-1	Atom-2	Interatomic distance (Å)	Clash overlap (Å)
1:C:2:ASP:HB3	7:C:2001:HOH:O	1.67	0.93
1:C:301:ASN:HD22	5:C:1337:PEG:H11	1.41	0.84
5:C:1337:PEG:O2	7:C:2305:HOH:O	1.95	0.83
1:C:301:ASN:HD22	5:C:1337:PEG:C1	1.90	0.83
1:A:9[B]:THR:HG23	1:A:31:LYS:HD3	1.70	0.73
1:C:304:GLU:OE2	5:C:1337:PEG:H41	1.91	0.71
1:C:2:ASP:OD2	7:C:2001:HOH:O	2.11	0.67
1:C:247:ARG:NH2	5:C:1337:PEG:H42	2.08	0.67
1:A:9[B]:THR:CG2	1:A:31:LYS:HD3	2.25	0.67
1:C:247:ARG:HH22	5:C:1337:PEG:H42	1.60	0.66
1:C:247:ARG:HH22	5:C:1337:PEG:C4	2.12	0.61
5:C:1337:PEG:H31	7:C:2304:HOH:O	1.99	0.61
1:C:2:ASP:CB	7:C:2001:HOH:O	2.38	0.59
5:C:1337:PEG:C3	7:C:2304:HOH:O	2.51	0.59
1:C:304:GLU:CD	5:C:1337:PEG:H41	2.26	0.55
1:C:304:GLU:OE1	5:C:1337:PEG:H41	2.06	0.55
1:C:301:ASN:ND2	5:C:1337:PEG:H11	2.17	0.53

*Continued on next page...*

Continued from previous page...

Atom-1	Atom-2	Interatomic distance (Å)	Clash overlap (Å)
1:C:2:ASP:CG	7:C:2001:HOH:O	2.46	0.50
1:A:39:ILE:HD13	1:A:89:HIS:HB2	1.94	0.48
1:C:188[B]:LYS:NZ	7:C:2199:HOH:O	2.46	0.48
1:C:247:ARG:CZ	5:C:1337:PEG:H42	2.44	0.47
1:C:162:LYS:NZ	7:C:2169:HOH:O	2.46	0.46
1:A:130:CYS:HB2	1:A:144[B]:MET:HE3	1.98	0.46
1:A:2:ASP:O	1:A:4:ASP:N	2.52	0.43
1:A:58:PHE:CZ	1:A:144[B]:MET:HE3	2.54	0.43
1:C:9:THR:HG23	1:C:33:VAL:HG13	2.01	0.43
1:A:247:ARG:HA	1:A:275:TRP:O	2.19	0.43
1:A:157:LYS:NZ	7:A:2169:HOH:O	2.50	0.43
5:C:1337:PEG:C2	7:C:2305:HOH:O	2.61	0.42
1:A:236:LEU:HD11	1:A:284:ALA:HB1	2.01	0.41
1:C:247:ARG:NH1	5:C:1337:PEG:H42	2.36	0.41
1:A:2:ASP:N	1:A:2:ASP:OD1	2.55	0.40

All (1) symmetry-related close contacts are listed below. The label for Atom-2 includes the symmetry operator and encoded unit-cell translations to be applied.

Atom-1	Atom-2	Interatomic distance (Å)	Clash overlap (Å)
7:C:2250:HOH:O	7:C:2250:HOH:O[2_435]	2.19	0.01

## 5.3 Torsion angles [i](#)

### 5.3.1 Protein backbone [i](#)

In the following table, the Percentiles column shows the percent Ramachandran outliers of the chain as a percentile score with respect to all X-ray entries followed by that with respect to entries of similar resolution.

The Analysed column shows the number of residues for which the backbone conformation was analysed, and the total number of residues.

Mol	Chain	Analysed	Favoured	Allowed	Outliers	Percentiles	
1	A	339/336 (101%)	331 (98%)	7 (2%)	1 (0%)	41	21
1	C	337/336 (100%)	332 (98%)	4 (1%)	1 (0%)	41	21
All	All	676/672 (101%)	663 (98%)	11 (2%)	2 (0%)	41	21

All (2) Ramachandran outliers are listed below:

Mol	Chain	Res	Type
1	A	3	ALA
1	C	24	GLN

### 5.3.2 Protein sidechains [i](#)

In the following table, the Percentiles column shows the percent sidechain outliers of the chain as a percentile score with respect to all X-ray entries followed by that with respect to entries of similar resolution.

The Analysed column shows the number of residues for which the sidechain conformation was analysed, and the total number of residues.

Mol	Chain	Analysed	Rotameric	Outliers	Percentiles	
1	A	269/270 (100%)	268 (100%)	1 (0%)	91	84
1	C	269/270 (100%)	266 (99%)	3 (1%)	73	57
All	All	538/540 (100%)	534 (99%)	4 (1%)	81	73

All (4) residues with a non-rotameric sidechain are listed below:

Mol	Chain	Res	Type
1	A	158	ASP
1	C	2	ASP
1	C	104	LYS
1	C	336	ARG

Sometimes sidechains can be flipped to improve hydrogen bonding and reduce clashes. All (1) such sidechains are listed below:

Mol	Chain	Res	Type
1	C	301	ASN

### 5.3.3 RNA [i](#)

There are no RNA molecules in this entry.

## 5.4 Non-standard residues in protein, DNA, RNA chains [i](#)

There are no non-standard protein/DNA/RNA residues in this entry.

## 5.5 Carbohydrates [i](#)

There are no monosaccharides in this entry.

## 5.6 Ligand geometry [i](#)

Of 18 ligands modelled in this entry, 8 are monoatomic - leaving 10 for Mogul analysis.

In the following table, the Counts columns list the number of bonds (or angles) for which Mogul statistics could be retrieved, the number of bonds (or angles) that are observed in the model and the number of bonds (or angles) that are defined in the Chemical Component Dictionary. The Link column lists molecule types, if any, to which the group is linked. The Z score for a bond length (or angle) is the number of standard deviations the observed value is removed from the expected value. A bond length (or angle) with  $|Z| > 2$  is considered an outlier worth inspection. RMSZ is the root-mean-square of all Z scores of the bond lengths (or angles).

Mol	Type	Chain	Res	Link	Bond lengths			Bond angles		
					Counts	RMSZ	$\# Z  > 2$	Counts	RMSZ	$\# Z  > 2$
6	MES	C	1344	-	12,12,12	1.44	1 (8%)	15,16,16	4.83	8 (53%)
5	PEG	C	1341	-	6,6,6	0.51	0	5,5,5	0.47	0
5	PEG	C	1337	-	6,6,6	0.33	0	5,5,5	0.55	0
6	MES	A	1343	-	12,12,12	1.26	2 (16%)	15,16,16	4.77	9 (60%)
6	MES	C	1343	-	12,12,12	1.73	1 (8%)	15,16,16	5.19	8 (53%)
5	PEG	A	1340	-	6,6,6	0.46	0	5,5,5	0.21	0
2	PG4	A	999	-	12,12,12	0.39	0	11,11,11	0.46	0
6	MES	A	1342	-	12,12,12	1.74	1 (8%)	15,16,16	4.92	10 (66%)
2	PG4	C	999	-	12,12,12	0.45	0	11,11,11	0.59	0
5	PEG	A	1344	-	6,6,6	0.49	0	5,5,5	0.36	0

In the following table, the Chirals column lists the number of chiral outliers, the number of chiral centers analysed, the number of these observed in the model and the number defined in the Chemical Component Dictionary. Similar counts are reported in the Torsion and Rings columns. '-' means no outliers of that kind were identified.

Mol	Type	Chain	Res	Link	Chirals	Torsions	Rings
6	MES	C	1344	-	-	1/6/14/14	0/1/1/1
5	PEG	C	1341	-	-	4/4/4/4	-
5	PEG	C	1337	-	-	3/4/4/4	-
6	MES	A	1343	-	-	2/6/14/14	0/1/1/1
6	MES	C	1343	-	-	1/6/14/14	0/1/1/1
5	PEG	A	1340	-	-	1/4/4/4	-
2	PG4	A	999	-	-	0/10/10/10	-
6	MES	A	1342	-	-	1/6/14/14	0/1/1/1

*Continued on next page...*

*Continued from previous page...*

Mol	Type	Chain	Res	Link	Chirals	Torsions	Rings
2	PG4	C	999	-	-	1/10/10/10	-
5	PEG	A	1344	-	-	3/4/4/4	-

All (5) bond length outliers are listed below:

Mol	Chain	Res	Type	Atoms	Z	Observed(Å)	Ideal(Å)
6	A	1342	MES	C8-S	-5.40	1.70	1.77
6	C	1343	MES	C8-S	-5.35	1.70	1.77
6	C	1344	MES	C8-S	-3.77	1.72	1.77
6	A	1343	MES	C8-S	-3.24	1.73	1.77
6	A	1343	MES	O1S-S	2.39	1.51	1.45

All (35) bond angle outliers are listed below:

Mol	Chain	Res	Type	Atoms	Z	Observed(°)	Ideal(°)
6	C	1343	MES	O2S-S-C8	-12.67	87.58	106.73
6	A	1342	MES	O2S-S-C8	-11.78	88.93	106.73
6	A	1343	MES	O1S-S-C8	-11.15	89.89	106.73
6	C	1344	MES	O2S-S-C8	-10.72	90.54	106.73
6	C	1343	MES	O1S-S-C8	-10.04	91.56	106.73
6	C	1344	MES	O3S-S-C8	-9.84	86.75	106.00
6	A	1342	MES	O1S-S-C8	-9.67	92.12	106.73
6	A	1343	MES	O2S-S-C8	-8.23	94.29	106.73
6	C	1343	MES	O3S-S-C8	-7.83	90.69	106.00
6	C	1344	MES	O1S-S-C8	-7.25	95.77	106.73
6	A	1342	MES	O3S-S-C8	-7.07	92.18	106.00
6	A	1343	MES	O3S-S-C8	-6.72	92.86	106.00
6	A	1343	MES	C5-N4-C3	6.46	122.76	108.84
6	C	1343	MES	C5-N4-C3	5.87	121.49	108.84
6	C	1344	MES	C7-N4-C5	5.58	126.12	111.24
6	A	1342	MES	C5-N4-C3	4.88	119.35	108.84
6	C	1344	MES	O3S-S-O2S	4.49	122.63	111.40
6	A	1343	MES	O3S-S-O1S	4.19	121.88	111.40
6	C	1344	MES	C5-N4-C3	3.61	116.62	108.84
6	C	1343	MES	O3S-S-O2S	3.59	120.37	111.40
6	A	1342	MES	C7-N4-C5	3.45	120.43	111.24
6	A	1342	MES	O2S-S-O1S	3.40	124.88	113.82
6	A	1343	MES	C2-C3-N4	3.40	115.28	110.12
6	A	1342	MES	C7-N4-C3	3.36	120.18	111.24
6	C	1343	MES	C7-N4-C5	3.09	119.47	111.24
6	C	1343	MES	O2S-S-O1S	2.96	123.45	113.82
6	C	1343	MES	C7-N4-C3	2.92	119.03	111.24

*Continued on next page...*

*Continued from previous page...*

Mol	Chain	Res	Type	Atoms	Z	Observed(°)	Ideal(°)
6	A	1343	MES	C7-N4-C5	2.77	118.63	111.24
6	A	1342	MES	O3S-S-O2S	2.63	117.97	111.40
6	A	1343	MES	C7-N4-C3	2.59	118.15	111.24
6	A	1343	MES	O3S-S-O2S	2.54	117.76	111.40
6	C	1344	MES	O2S-S-O1S	2.40	121.63	113.82
6	A	1342	MES	O3S-S-O1S	2.26	117.05	111.40
6	A	1342	MES	C2-C3-N4	-2.25	106.70	110.12
6	C	1344	MES	C7-N4-C3	2.23	117.17	111.24

There are no chirality outliers.

All (17) torsion outliers are listed below:

Mol	Chain	Res	Type	Atoms
6	C	1343	MES	C8-C7-N4-C3
6	C	1344	MES	C8-C7-N4-C5
5	C	1341	PEG	O1-C1-C2-O2
5	C	1337	PEG	O1-C1-C2-O2
5	C	1341	PEG	O2-C3-C4-O4
5	A	1344	PEG	O2-C3-C4-O4
6	A	1342	MES	C8-C7-N4-C3
6	A	1343	MES	C8-C7-N4-C3
5	A	1344	PEG	C1-C2-O2-C3
2	C	999	PG4	O1-C1-C2-O2
5	A	1340	PEG	O1-C1-C2-O2
5	A	1344	PEG	C4-C3-O2-C2
6	A	1343	MES	C7-C8-S-O3S
5	C	1337	PEG	C4-C3-O2-C2
5	C	1337	PEG	C1-C2-O2-C3
5	C	1341	PEG	C1-C2-O2-C3
5	C	1341	PEG	C4-C3-O2-C2

There are no ring outliers.

1 monomer is involved in 15 short contacts:

Mol	Chain	Res	Type	Clashes	Symm-Clashes
5	C	1337	PEG	15	0

## 5.7 Other polymers ⓘ

There are no such residues in this entry.

## 5.8 Polymer linkage issues ⓘ

There are no chain breaks in this entry.



## 6 Fit of model and data ⓘ

### 6.1 Protein, DNA and RNA chains ⓘ

In the following table, the column labelled ‘#RSRZ > 2’ contains the number (and percentage) of RSRZ outliers, followed by percent RSRZ outliers for the chain as percentile scores relative to all X-ray entries and entries of similar resolution. The OWAB column contains the minimum, median, 95<sup>th</sup> percentile and maximum values of the occupancy-weighted average B-factor per residue. The column labelled ‘Q < 0.9’ lists the number of (and percentage) of residues with an average occupancy less than 0.9.

Mol	Chain	Analysed	<RSRZ>	#RSRZ>2	OWAB(Å <sup>2</sup> )	Q<0.9
1	A	335/336 (99%)	-0.12	14 (4%) 36 33	9, 19, 31, 49	9 (2%)
1	C	335/336 (99%)	-0.04	16 (4%) 30 28	9, 21, 35, 55	5 (1%)
All	All	670/672 (99%)	-0.08	30 (4%) 33 30	9, 20, 34, 55	14 (2%)

All (30) RSRZ outliers are listed below:

Mol	Chain	Res	Type	RSRZ
1	A	2	ASP	6.3
1	C	5	LYS	6.2
1	C	2	ASP	5.7
1	C	336	ARG	5.7
1	C	3	ALA	5.4
1	A	3	ALA	5.3
1	A	5	LYS	5.1
1	A	335	PRO	4.9
1	C	334	ILE	4.7
1	C	111	GLY	4.5
1	C	335	PRO	4.5
1	A	4	ASP	4.2
1	A	83	ALA	3.7
1	A	333	PRO	3.5
1	A	6	LEU	3.4
1	A	111	GLY	3.4
1	C	4	ASP	3.4
1	C	83	ALA	2.8
1	A	224	ALA	2.6
1	C	107	ASN	2.6
1	C	6	LEU	2.5
1	C	93	PHE	2.4
1	A	183	PRO	2.3
1	A	336	ARG	2.3

*Continued on next page...*

*Continued from previous page...*

Mol	Chain	Res	Type	RSRZ
1	A	334	ILE	2.3
1	A	30	PRO	2.2
1	C	12	THR	2.2
1	C	148	LEU	2.2
1	C	7	PRO	2.2
1	C	330	ALA	2.1

## 6.2 Non-standard residues in protein, DNA, RNA chains [i](#)

There are no non-standard protein/DNA/RNA residues in this entry.

## 6.3 Carbohydrates [i](#)

There are no monosaccharides in this entry.

## 6.4 Ligands [i](#)

In the following table, the Atoms column lists the number of modelled atoms in the group and the number defined in the chemical component dictionary. The B-factors column lists the minimum, median, 95<sup>th</sup> percentile and maximum values of B factors of atoms in the group. The column labelled 'Q< 0.9' lists the number of atoms with occupancy less than 0.9.

Mol	Type	Chain	Res	Atoms	RSCC	RSR	B-factors(Å <sup>2</sup> )	Q<0.9
5	PEG	C	1341	7/7	0.70	0.22	50,50,51,52	0
5	PEG	C	1337	7/7	0.78	0.22	49,51,53,53	0
5	PEG	A	1344	7/7	0.80	0.17	51,52,55,55	0
5	PEG	A	1340	7/7	0.83	0.14	63,63,65,65	0
6	MES	C	1343	12/12	0.88	0.24	34,42,44,45	2
6	MES	A	1343	12/12	0.90	0.11	24,28,44,46	0
6	MES	C	1344	12/12	0.92	0.10	27,32,48,48	0
6	MES	A	1342	12/12	0.93	0.18	32,42,44,44	2
4	ZN	A	1341	1/1	0.93	0.05	39,39,39,39	1
2	PG4	A	999	13/13	0.94	0.07	26,30,35,39	0
2	PG4	C	999	13/13	0.95	0.07	25,30,38,40	0
4	ZN	C	1342	1/1	0.97	0.03	54,54,54,54	1
4	ZN	A	1339	1/1	1.00	0.03	24,24,24,24	0
3	CU	A	1337	1/1	1.00	0.08	21,21,21,21	1
4	ZN	C	1340	1/1	1.00	0.02	26,26,26,26	0
3	CU	A	1338	1/1	1.00	0.05	14,14,14,14	0
3	CU	C	1338	1/1	1.00	0.05	20,20,20,20	1

*Continued on next page...*

*Continued from previous page...*

Mol	Type	Chain	Res	Atoms	RSCC	RSR	B-factors( $\text{\AA}^2$ )	Q<0.9
3	CU	C	1339	1/1	1.00	0.07	15,15,15,15	0

## 6.5 Other polymers [i](#)

There are no such residues in this entry.