



wwPDB X-ray Structure Validation Summary Report ⓘ

Jun 11, 2024 – 09:59 PM EDT

PDB ID : 6N9Q
Title : Structure of the Quorum Quenching lactonase from *Parageobacillus caldoylosilyticus* bind to substrate C4-AHL
Authors : Bergonzi, C.; Schwab, M.; Elias, M.
Deposited on : 2018-12-03
Resolution : 2.35 Å(reported)

This is a wwPDB X-ray Structure Validation Summary Report for a publicly released PDB entry.

We welcome your comments at validation@mail.wwpdb.org

A user guide is available at

<https://www.wwpdb.org/validation/2017/XrayValidationReportHelp>

with specific help available everywhere you see the ⓘ symbol.

The types of validation reports are described at

<http://www.wwpdb.org/validation/2017/FAQs#types>.

The following versions of software and data (see [references ⓘ](#)) were used in the production of this report:

MolProbity	:	4.02b-467
Mogul	:	1.8.5 (274361), CSD as541be (2020)
Xtriage (Phenix)	:	1.13
EDS	:	2.36.2
buster-report	:	1.1.7 (2018)
Percentile statistics	:	20191225.v01 (using entries in the PDB archive December 25th 2019)
Refmac	:	5.8.0158
CCP4	:	7.0.044 (Gargrove)
Ideal geometry (proteins)	:	Engh & Huber (2001)
Ideal geometry (DNA, RNA)	:	Parkinson et al. (1996)
Validation Pipeline (wwPDB-VP)	:	2.36.2

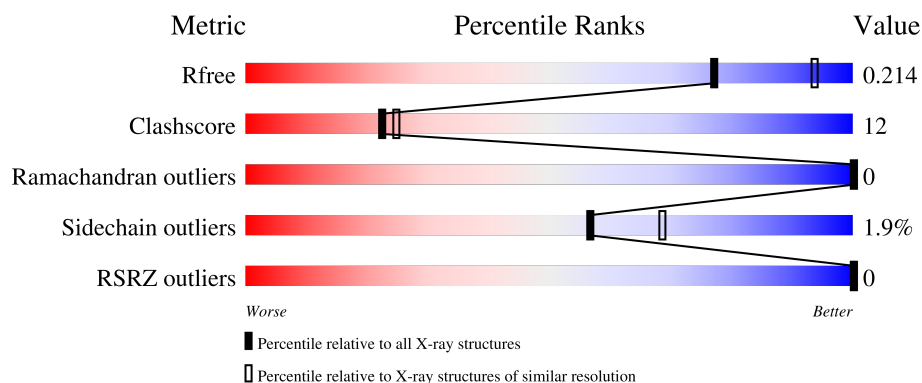
1 Overall quality at a glance

The following experimental techniques were used to determine the structure:

X-RAY DIFFRACTION



The reported resolution of this entry is 2.35 Å.

Percentile scores (ranging between 0-100) for global validation metrics of the entry are shown in the following graphic. The table shows the number of entries on which the scores are based.



Metric	Whole archive (#Entries)	Similar resolution (#Entries, resolution range(Å))
R_{free}	130704	1164 (2.36-2.36)
Clashscore	141614	1232 (2.36-2.36)
Ramachandran outliers	138981	1211 (2.36-2.36)
Sidechain outliers	138945	1212 (2.36-2.36)
RSRZ outliers	127900	1150 (2.36-2.36)

The table below summarises the geometric issues observed across the polymeric chains and their fit to the electron density. The red, orange, yellow and green segments of the lower bar indicate the fraction of residues that contain outliers for ≥ 3 , 2, 1 and 0 types of geometric quality criteria respectively. A grey segment represents the fraction of residues that are not modelled. The numeric value for each fraction is indicated below the corresponding segment, with a dot representing fractions $\leq 5\%$. The upper red bar (where present) indicates the fraction of residues that have poor fit to the electron density. The numeric value is given above the bar.

Mol	Chain	Length	Quality of chain
1	D	282	
1	P	282	

The following table lists non-polymeric compounds, carbohydrate monomers and non-standard residues in protein, DNA, RNA chains that are outliers for geometric or electron-density-fit criteria:

Mol	Type	Chain	Res	Chirality	Geometry	Clashes	Electron density
5	EDO	D	313	-	-	X	-
5	EDO	P	311	-	-	X	-
6	1PE	D	314	-	-	X	-
6	1PE	P	312	-	-	X	-
8	ACT	D	317	-	-	X	-

2 Entry composition [i](#)

There are 10 unique types of molecules in this entry. The entry contains 5043 atoms, of which 0 are hydrogens and 0 are deuteriums.

In the tables below, the ZeroOcc column contains the number of atoms modelled with zero occupancy, the AltConf column contains the number of residues with at least one atom in alternate conformation and the Trace column contains the number of residues modelled with at most 2 atoms.

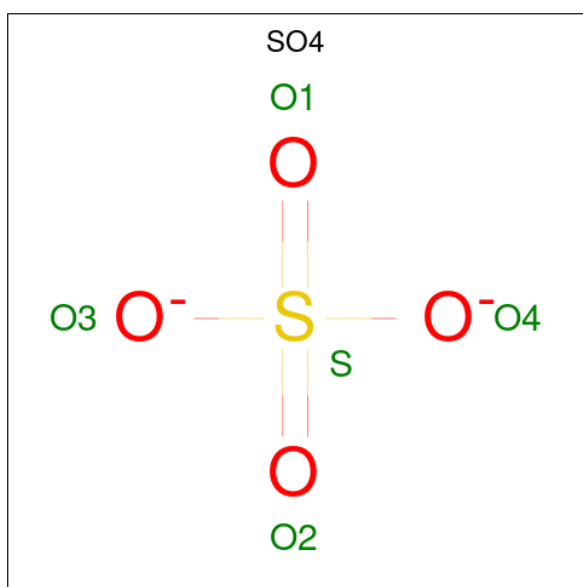
- Molecule 1 is a protein called Lactonase GcL.

Mol	Chain	Residues	Atoms					ZeroOcc	AltConf	Trace
1	P	277	Total	C	N	O	S	0	8	0
			2318	1469	404	431	14			
1	D	277	Total	C	N	O	S	0	7	0
			2310	1465	403	428	14			

- Molecule 2 is COBALT (II) ION (three-letter code: CO) (formula: Co).

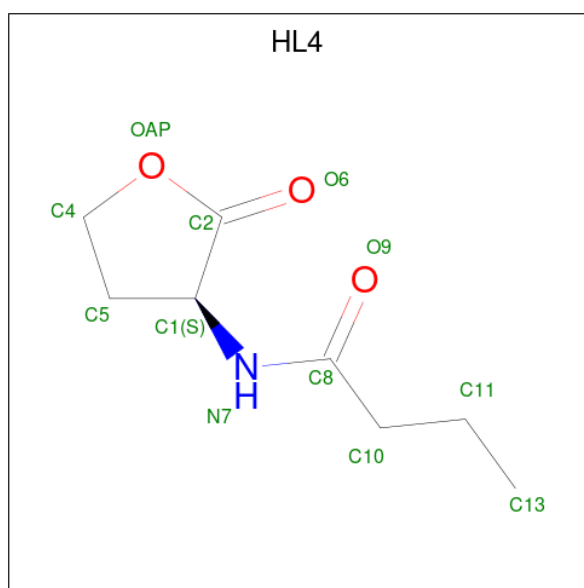
Mol	Chain	Residues	Atoms		ZeroOcc	AltConf
2	P	1	Total	Co	0	0
			1	1		
2	D	1	Total	Co	0	0
			1	1		

- Molecule 3 is SULFATE ION (three-letter code: SO4) (formula: O₄S).



Mol	Chain	Residues	Atoms			ZeroOcc	AltConf
3	P	1	Total	O	S	0	0
			5	4	1		
3	P	1	Total	O	S	0	0
			5	4	1		
3	D	1	Total	O	S	0	0
			5	4	1		
3	D	1	Total	O	S	0	0
			5	4	1		
3	D	1	Total	O	S	0	0
			5	4	1		

- Molecule 4 is N-[(3S)-2-oxotetrahydrofuran-3-yl]butanamide (three-letter code: HL4) (formula: C₈H₁₃NO₃) (labeled as "Ligand of Interest" by depositor).



Mol	Chain	Residues	Atoms				ZeroOcc	AltConf
4	P	1	Total	C	N	O	0	0
			12	8	1	3		
4	D	1	Total	C	N	O	0	0
			12	8	1	3		

- Molecule 5 is 1,2-ETHANEDIOL (three-letter code: EDO) (formula: C₂H₆O₂).



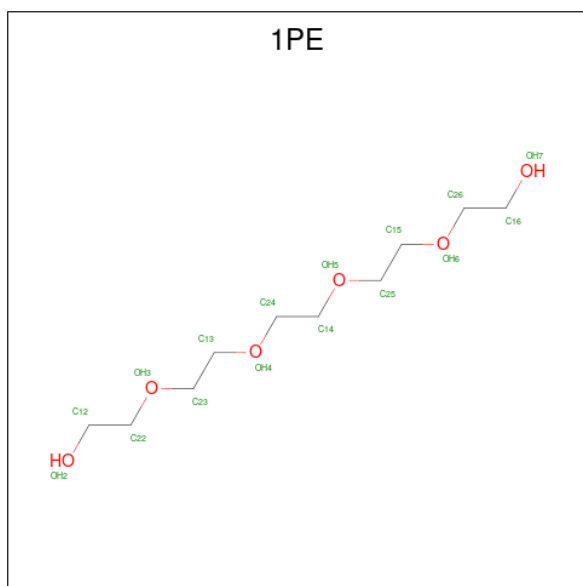
Mol	Chain	Residues	Atoms			ZeroOcc	AltConf
5	P	1	Total	C	O	0	0
			4	2	2		
5	P	1	Total	C	O	0	0
			4	2	2		
5	P	1	Total	C	O	0	0
			4	2	2		
5	P	1	Total	C	O	0	0
			4	2	2		
5	P	1	Total	C	O	0	0
			4	2	2		
5	P	1	Total	C	O	0	0
			4	2	2		
5	D	1	Total	C	O	0	0
			4	2	2		
5	D	1	Total	C	O	0	0
			4	2	2		
5	D	1	Total	C	O	0	0
			4	2	2		
5	D	1	Total	C	O	0	0
			4	2	2		
5	D	1	Total	C	O	0	0
			4	2	2		

Continued on next page...

Continued from previous page...

Mol	Chain	Residues	Atoms			ZeroOcc	AltConf
5	D	1	Total	C	O	0	0
			4	2	2		

- Molecule 6 is PENTAETHYLENE GLYCOL (three-letter code: 1PE) (formula: $C_{10}H_{22}O_6$).



Mol	Chain	Residues	Atoms			ZeroOcc	AltConf
6	P	1	Total	C	O	0	0
			16	10	6		
6	P	1	Total	C	O	0	0
			16	10	6		
6	D	1	Total	C	O	0	0
			16	10	6		
6	D	1	Total	C	O	0	0
			16	10	6		

- Molecule 7 is FE (III) ION (three-letter code: FE) (formula: Fe).

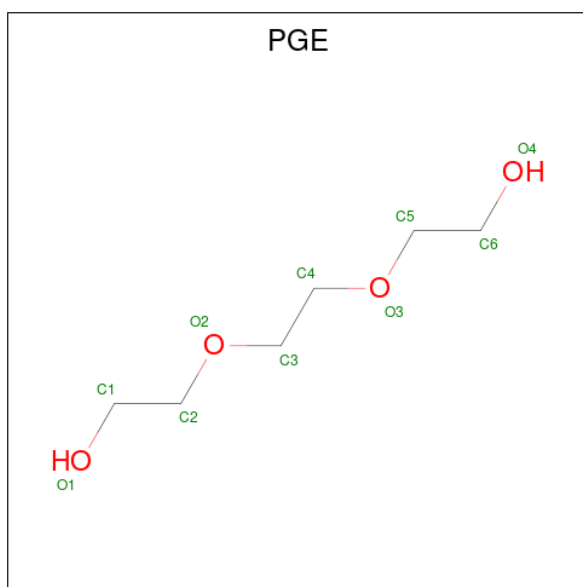
Mol	Chain	Residues	Atoms		ZeroOcc	AltConf
7	P	1	Total	Fe	0	0
			1	1		
7	D	1	Total	Fe	0	0
			1	1		

- Molecule 8 is ACETATE ION (three-letter code: ACT) (formula: $C_2H_3O_2$).



Mol	Chain	Residues	Atoms			ZeroOcc	AltConf
8	P	1	Total	C	O	0	0
			4	2	2		
8	D	1	Total	C	O	0	0
			4	2	2		
8	D	1	Total	C	O	0	0
			4	2	2		

- Molecule 9 is TRIETHYLENE GLYCOL (three-letter code: PGE) (formula: C₆H₁₄O₄).



Mol	Chain	Residues	Atoms			ZeroOcc	AltConf
9	P	1	Total	C	O	0	0
			10	6	4		

Continued on next page...

Continued from previous page...

Mol	Chain	Residues	Atoms			ZeroOcc	AltConf
9	P	1	Total	C	O	0	0
			10	6	4		
9	D	1	Total	C	O	0	0
			10	6	4		
9	D	1	Total	C	O	0	0
			10	6	4		

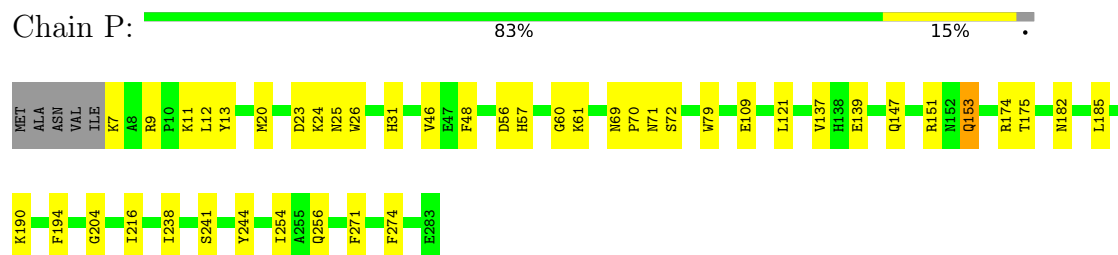
- Molecule 10 is water.

Mol	Chain	Residues	Atoms		ZeroOcc	AltConf
10	P	88	Total	O	0	0
			88	88		
10	D	98	Total	O	0	0
			98	98		

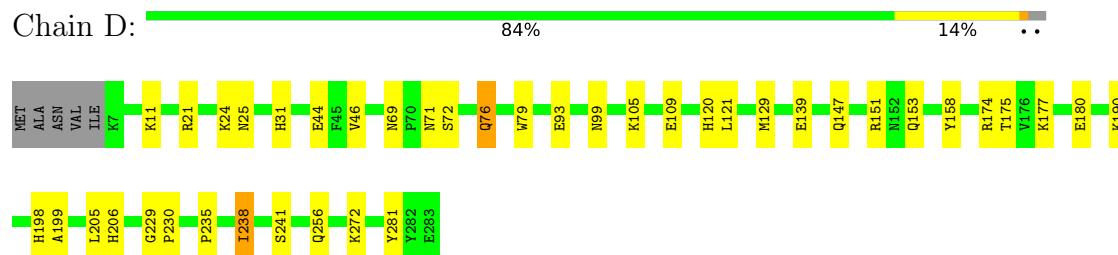
3 Residue-property plots

These plots are drawn for all protein, RNA, DNA and oligosaccharide chains in the entry. The first graphic for a chain summarises the proportions of the various outlier classes displayed in the second graphic. The second graphic shows the sequence view annotated by issues in geometry and electron density. Residues are color-coded according to the number of geometric quality criteria for which they contain at least one outlier: green = 0, yellow = 1, orange = 2 and red = 3 or more. A red dot above a residue indicates a poor fit to the electron density ($RSRZ > 2$). Stretches of 2 or more consecutive residues without any outlier are shown as a green connector. Residues present in the sample, but not in the model, are shown in grey.

• Molecule 1: Lactonase GcL



• Molecule 1: Lactonase GcL



4 Data and refinement statistics

Property	Value	Source
Space group	H 3	Depositor
Cell constants a, b, c, α , β , γ	108.02Å 108.02Å 222.14Å 90.00° 90.00° 120.00°	Depositor
Resolution (Å)	19.74 – 2.35 19.74 – 2.35	Depositor EDS
% Data completeness (in resolution range)	98.9 (19.74-2.35) 99.0 (19.74-2.35)	Depositor EDS
R_{merge}	(Not available)	Depositor
R_{sym}	(Not available)	Depositor
$\langle I/\sigma(I) \rangle$ ¹	3.55 (at 2.35Å)	Xtriage
Refinement program	REFMAC 5.8.0222	Depositor
R, R_{free}	0.166 , 0.211 0.172 , 0.214	Depositor DCC
R_{free} test set	1991 reflections (5.00%)	wwPDB-VP
Wilson B-factor (Å ²)	40.3	Xtriage
Anisotropy	0.051	Xtriage
Bulk solvent k_{sol} (e/Å ³), B_{sol} (Å ²)	0.32 , 23.9	EDS
L-test for twinning ²	$\langle L \rangle = 0.51$, $\langle L^2 \rangle = 0.34$	Xtriage
Estimated twinning fraction	0.478 for h,-h-k,-l	Xtriage
F_o, F_c correlation	0.96	EDS
Total number of atoms	5043	wwPDB-VP
Average B, all atoms (Å ²)	44.0	wwPDB-VP

Xtriage's analysis on translational NCS is as follows: *The largest off-origin peak in the Patterson function is 3.29% of the height of the origin peak. No significant pseudotranslation is detected.*

¹Intensities estimated from amplitudes.

²Theoretical values of $\langle |L| \rangle$, $\langle L^2 \rangle$ for acentric reflections are 0.5, 0.333 respectively for untwinned datasets, and 0.375, 0.2 for perfectly twinned datasets.

5 Model quality

5.1 Standard geometry

Bond lengths and bond angles in the following residue types are not validated in this section: ACT, HL4, FE, CO, EDO, PGE, SO4, 1PE

The Z score for a bond length (or angle) is the number of standard deviations the observed value is removed from the expected value. A bond length (or angle) with $|Z| > 5$ is considered an outlier worth inspection. RMSZ is the root-mean-square of all Z scores of the bond lengths (or angles).

Mol	Chain	Bond lengths		Bond angles	
		RMSZ	$\# Z > 5$	RMSZ	$\# Z > 5$
1	D	0.24	0/2373	0.44	0/3217
1	P	0.25	0/2381	0.44	0/3228
All	All	0.24	0/4754	0.44	0/6445

There are no bond length outliers.

There are no bond angle outliers.

There are no chirality outliers.

There are no planarity outliers.

5.2 Too-close contacts

In the following table, the Non-H and H(model) columns list the number of non-hydrogen atoms and hydrogen atoms in the chain respectively. The H(added) column lists the number of hydrogen atoms added and optimized by MolProbity. The Clashes column lists the number of clashes within the asymmetric unit, whereas Symm-Clashes lists symmetry-related clashes.

Mol	Chain	Non-H	H(model)	H(added)	Clashes	Symm-Clashes
1	D	2310	0	2205	51	0
1	P	2318	0	2208	49	0
2	D	1	0	0	0	0
2	P	1	0	0	0	0
3	D	15	0	0	0	0
3	P	10	0	0	0	0
4	D	12	0	13	1	0
4	P	12	0	13	0	0
5	D	32	0	48	8	0
5	P	28	0	42	7	0
6	D	32	0	44	17	1

Continued on next page...

Continued from previous page...

Mol	Chain	Non-H	H(model)	H(added)	Clashes	Symm-Clashes
6	P	32	0	44	9	1
7	D	1	0	0	0	0
7	P	1	0	0	0	0
8	D	8	0	6	7	0
8	P	4	0	3	0	0
9	D	20	0	28	5	0
9	P	20	0	28	3	0
10	D	98	0	0	11	0
10	P	88	0	0	1	0
All	All	5043	0	4682	111	1

The all-atom clashscore is defined as the number of clashes found per 1000 atoms (including hydrogen atoms). The all-atom clashscore for this structure is 12.

The worst 5 of 111 close contacts within the same asymmetric unit are listed below, sorted by their clash magnitude.

Atom-1	Atom-2	Interatomic distance (Å)	Clash overlap (Å)
1:P:147:GLN:NE2	1:D:139[B]:GLU:OE2	1.62	1.30
1:P:151:ARG:HH22	8:D:317:ACT:H3	1.13	1.12
6:D:314:1PE:OH2	10:D:401:HOH:O	1.74	1.03
1:P:70:PRO:O	5:P:310:EDO:H11	1.63	0.97
1:P:11:LYS:HE2	6:P:312:1PE:OH6	1.65	0.95

All (1) symmetry-related close contacts are listed below. The label for Atom-2 includes the symmetry operator and encoded unit-cell translations to be applied.

Atom-1	Atom-2	Interatomic distance (Å)	Clash overlap (Å)
6:P:312:1PE:OH7	6:D:314:1PE:OH3[8_544]	1.96	0.24

5.3 Torsion angles [i](#)

5.3.1 Protein backbone [i](#)

In the following table, the Percentiles column shows the percent Ramachandran outliers of the chain as a percentile score with respect to all X-ray entries followed by that with respect to entries of similar resolution.

The Analysed column shows the number of residues for which the backbone conformation was analysed, and the total number of residues.

Mol	Chain	Analysed	Favoured	Allowed	Outliers	Percentiles	
1	D	281/282 (100%)	268 (95%)	13 (5%)	0	100	100
1	P	282/282 (100%)	272 (96%)	10 (4%)	0	100	100
All	All	563/564 (100%)	540 (96%)	23 (4%)	0	100	100

There are no Ramachandran outliers to report.

5.3.2 Protein sidechains ⓘ

In the following table, the Percentiles column shows the percent sidechain outliers of the chain as a percentile score with respect to all X-ray entries followed by that with respect to entries of similar resolution.

The Analysed column shows the number of residues for which the sidechain conformation was analysed, and the total number of residues.

Mol	Chain	Analysed	Rotameric	Outliers	Percentiles	
1	D	244/241 (101%)	238 (98%)	6 (2%)	47	58
1	P	245/241 (102%)	241 (98%)	4 (2%)	62	75
All	All	489/482 (102%)	479 (98%)	10 (2%)	57	66

5 of 10 residues with a non-rotameric sidechain are listed below:

Mol	Chain	Res	Type
1	D	153	GLN
1	D	205	LEU
1	D	238	ILE
1	P	256	GLN
1	D	44	GLU

Sometimes sidechains can be flipped to improve hydrogen bonding and reduce clashes. 5 of 14 such sidechains are listed below:

Mol	Chain	Res	Type
1	P	256	GLN
1	D	25	ASN
1	D	182	ASN
1	D	69	ASN
1	D	85	GLN

5.3.3 RNA ⓘ

There are no RNA molecules in this entry.

5.4 Non-standard residues in protein, DNA, RNA chains ⓘ

There are no non-standard protein/DNA/RNA residues in this entry.

5.5 Carbohydrates ⓘ

There are no monosaccharides in this entry.

5.6 Ligand geometry ⓘ

Of 37 ligands modelled in this entry, 4 are monoatomic - leaving 33 for Mogul analysis.

In the following table, the Counts columns list the number of bonds (or angles) for which Mogul statistics could be retrieved, the number of bonds (or angles) that are observed in the model and the number of bonds (or angles) that are defined in the Chemical Component Dictionary. The Link column lists molecule types, if any, to which the group is linked. The Z score for a bond length (or angle) is the number of standard deviations the observed value is removed from the expected value. A bond length (or angle) with $|Z| > 2$ is considered an outlier worth inspection. RMSZ is the root-mean-square of all Z scores of the bond lengths (or angles).

Mol	Type	Chain	Res	Link	Bond lengths			Bond angles		
					Counts	RMSZ	$\# Z > 2$	Counts	RMSZ	$\# Z > 2$
8	ACT	P	315	-	3,3,3	0.75	0	3,3,3	0.75	0
5	EDO	P	311	-	3,3,3	0.42	0	2,2,2	0.40	0
5	EDO	D	306	-	3,3,3	0.42	0	2,2,2	0.44	0
5	EDO	P	308	-	3,3,3	0.47	0	2,2,2	0.28	0
6	1PE	D	315	-	15,15,15	0.47	0	14,14,14	0.21	0
3	SO4	D	302	-	4,4,4	0.33	0	6,6,6	0.05	0
6	1PE	D	314	-	15,15,15	0.46	0	14,14,14	0.21	0
3	SO4	P	303	-	4,4,4	0.33	0	6,6,6	0.06	0
5	EDO	D	308	-	3,3,3	0.47	0	2,2,2	0.28	0
5	EDO	P	305	-	3,3,3	0.41	0	2,2,2	0.46	0
6	1PE	P	313	-	15,15,15	0.46	0	14,14,14	0.22	0
4	HL4	P	304	2,7	12,12,12	1.84	1 (8%)	11,15,15	2.40	3 (27%)
5	EDO	D	313	-	3,3,3	0.46	0	2,2,2	0.26	0
5	EDO	P	310	-	3,3,3	0.47	0	2,2,2	0.25	0
6	1PE	P	312	-	15,15,15	0.48	0	14,14,14	0.19	0
9	PGE	P	316	-	9,9,9	0.47	0	8,8,8	0.20	0
9	PGE	D	319	-	9,9,9	0.46	0	8,8,8	0.18	0

Mol	Type	Chain	Res	Link	Bond lengths			Bond angles		
					Counts	RMSZ	# Z > 2	Counts	RMSZ	# Z > 2
9	PGE	D	320	-	9,9,9	0.45	0	8,8,8	0.22	0
3	SO4	D	304	-	4,4,4	0.33	0	6,6,6	0.04	0
5	EDO	D	310	-	3,3,3	0.46	0	2,2,2	0.29	0
5	EDO	P	309	-	3,3,3	0.46	0	2,2,2	0.30	0
5	EDO	D	311	-	3,3,3	0.48	0	2,2,2	0.28	0
5	EDO	P	306	-	3,3,3	0.46	0	2,2,2	0.29	0
5	EDO	P	307	-	3,3,3	0.47	0	2,2,2	0.26	0
5	EDO	D	309	-	3,3,3	0.47	0	2,2,2	0.27	0
8	ACT	D	318	-	3,3,3	0.78	0	3,3,3	0.70	0
4	HL4	D	305	2,7	12,12,12	1.88	1 (8%)	11,15,15	2.02	3 (27%)
3	SO4	D	303	-	4,4,4	0.32	0	6,6,6	0.06	0
9	PGE	P	317	-	9,9,9	0.45	0	8,8,8	0.21	0
5	EDO	D	312	-	3,3,3	0.46	0	2,2,2	0.29	0
5	EDO	D	307	-	3,3,3	0.46	0	2,2,2	0.28	0
8	ACT	D	317	-	3,3,3	0.78	0	3,3,3	0.68	0
3	SO4	P	302	-	4,4,4	0.34	0	6,6,6	0.05	0

In the following table, the Chirals column lists the number of chiral outliers, the number of chiral centers analysed, the number of these observed in the model and the number defined in the Chemical Component Dictionary. Similar counts are reported in the Torsion and Rings columns. '-' means no outliers of that kind were identified.

Mol	Type	Chain	Res	Link	Chirals	Torsions	Rings
5	EDO	P	311	-	-	1/1/1/1	-
5	EDO	D	306	-	-	1/1/1/1	-
5	EDO	P	308	-	-	1/1/1/1	-
6	1PE	D	315	-	-	10/13/13/13	-
6	1PE	D	314	-	-	7/13/13/13	-
5	EDO	D	308	-	-	0/1/1/1	-
5	EDO	P	305	-	-	1/1/1/1	-
6	1PE	P	313	-	-	10/13/13/13	-
5	EDO	D	313	-	-	0/1/1/1	-
4	HL4	P	304	2,7	-	0/7/17/17	0/1/1/1
5	EDO	P	310	-	-	1/1/1/1	-
6	1PE	P	312	-	-	9/13/13/13	-
9	PGE	P	316	-	-	3/7/7/7	-
9	PGE	D	319	-	-	5/7/7/7	-
9	PGE	D	320	-	-	3/7/7/7	-
5	EDO	D	310	-	-	1/1/1/1	-
5	EDO	P	309	-	-	1/1/1/1	-
5	EDO	D	311	-	-	0/1/1/1	-

Continued on next page...

Continued from previous page...

Mol	Type	Chain	Res	Link	Chirals	Torsions	Rings
5	EDO	P	306	-	-	1/1/1/1	-
5	EDO	P	307	-	-	1/1/1/1	-
5	EDO	D	309	-	-	0/1/1/1	-
4	HL4	D	305	2,7	-	1/7/17/17	0/1/1/1
9	PGE	P	317	-	-	6/7/7/7	-
5	EDO	D	312	-	-	1/1/1/1	-
5	EDO	D	307	-	-	1/1/1/1	-

All (2) bond length outliers are listed below:

Mol	Chain	Res	Type	Atoms	Z	Observed(Å)	Ideal(Å)
4	D	305	HL4	C1-C2	-6.15	1.39	1.52
4	P	304	HL4	C1-C2	-5.99	1.39	1.52

The worst 5 of 6 bond angle outliers are listed below:

Mol	Chain	Res	Type	Atoms	Z	Observed(°)	Ideal(°)
4	P	304	HL4	C4-OAP-C2	-6.80	104.10	110.39
4	D	305	HL4	C4-OAP-C2	-5.40	105.40	110.39
4	P	304	HL4	OAP-C2-O6	2.56	124.08	121.42
4	D	305	HL4	OAP-C2-O6	2.42	123.93	121.42
4	P	304	HL4	C5-C1-N7	-2.03	110.40	114.96

There are no chirality outliers.

5 of 65 torsion outliers are listed below:

Mol	Chain	Res	Type	Atoms
6	D	314	1PE	C25-C15-OH6-C26
6	D	314	1PE	OH2-C12-C22-OH3
9	P	316	PGE	O2-C3-C4-O3
6	D	315	1PE	OH4-C13-C23-OH3
9	P	317	PGE	O2-C3-C4-O3

There are no ring outliers.

13 monomers are involved in 58 short contacts:

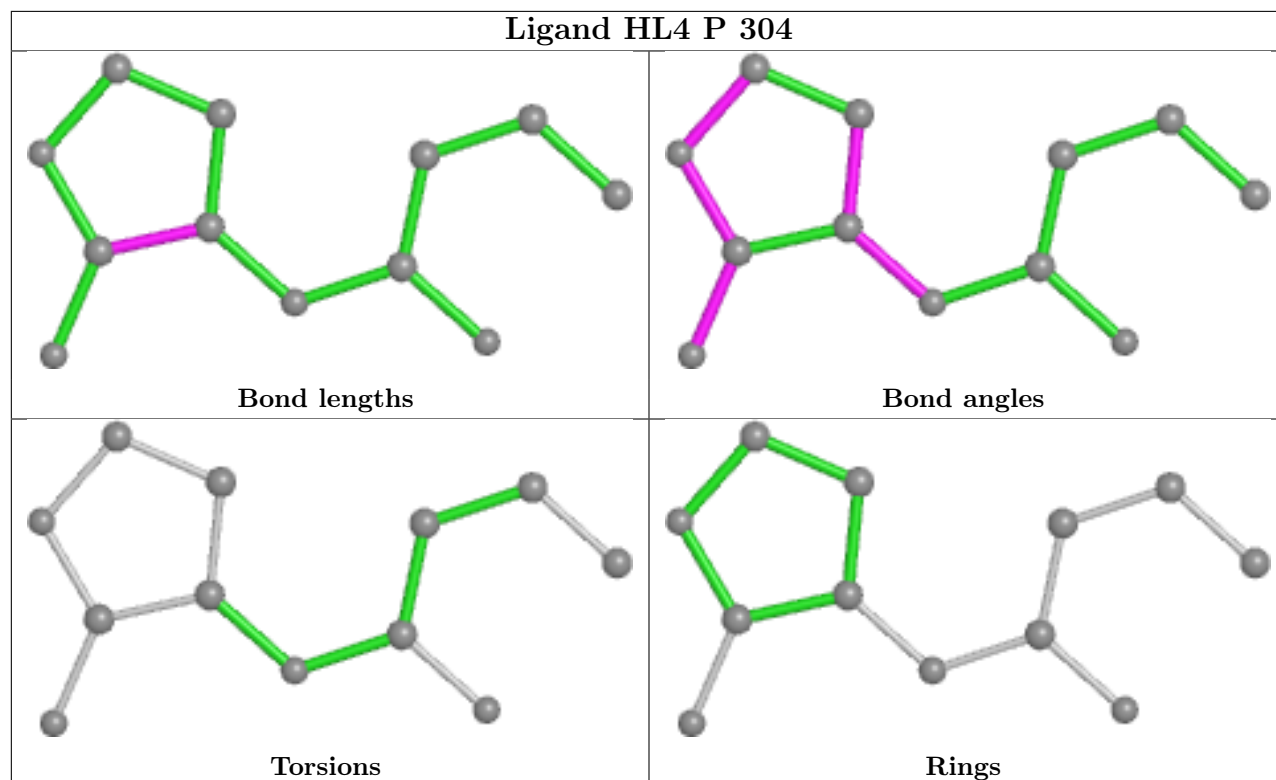
Mol	Chain	Res	Type	Clashes	Symm-Clashes
5	P	311	EDO	5	0
6	D	315	1PE	4	0
6	D	314	1PE	13	1
6	P	313	1PE	2	0

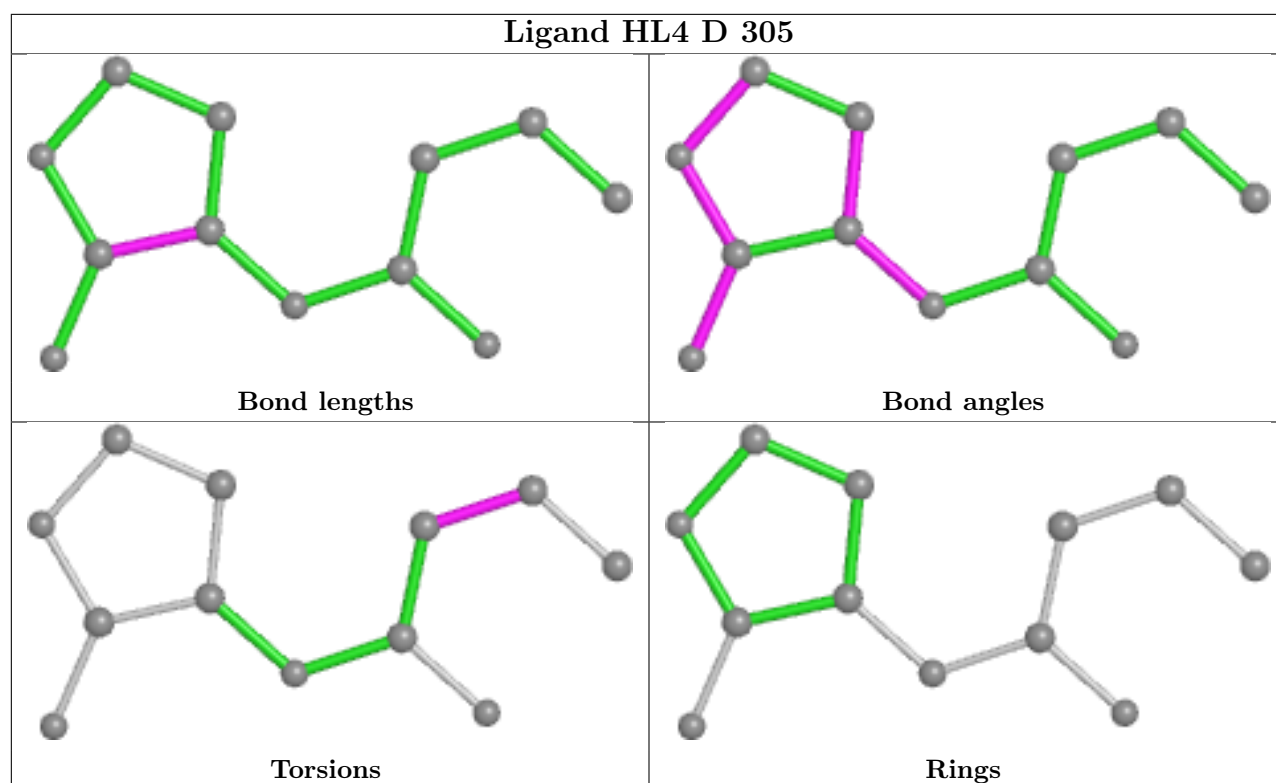
Continued on next page...

Continued from previous page...

Mol	Chain	Res	Type	Clashes	Symm-Clashes
5	D	313	EDO	8	0
5	P	310	EDO	2	0
6	P	312	1PE	7	1
9	P	316	PGE	2	0
9	D	319	PGE	5	0
8	D	318	ACT	1	0
4	D	305	HL4	1	0
9	P	317	PGE	1	0
8	D	317	ACT	6	0

The following is a two-dimensional graphical depiction of Mogul quality analysis of bond lengths, bond angles, torsion angles, and ring geometry for all instances of the Ligand of Interest. In addition, ligands with molecular weight > 250 and outliers as shown on the validation Tables will also be included. For torsion angles, if less than 5% of the Mogul distribution of torsion angles is within 10 degrees of the torsion angle in question, then that torsion angle is considered an outlier. Any bond that is central to one or more torsion angles identified as an outlier by Mogul will be highlighted in the graph. For rings, the root-mean-square deviation (RMSD) between the ring in question and similar rings identified by Mogul is calculated over all ring torsion angles. If the average RMSD is greater than 60 degrees and the minimal RMSD between the ring in question and any Mogul-identified rings is also greater than 60 degrees, then that ring is considered an outlier. The outliers are highlighted in purple. The color gray indicates Mogul did not find sufficient equivalents in the CSD to analyse the geometry.





5.7 Other polymers [i](#)

There are no such residues in this entry.

5.8 Polymer linkage issues [i](#)

There are no chain breaks in this entry.

6 Fit of model and data [i](#)

6.1 Protein, DNA and RNA chains [i](#)

In the following table, the column labelled ‘#RSRZ> 2’ contains the number (and percentage) of RSRZ outliers, followed by percent RSRZ outliers for the chain as percentile scores relative to all X-ray entries and entries of similar resolution. The OWAB column contains the minimum, median, 95th percentile and maximum values of the occupancy-weighted average B-factor per residue. The column labelled ‘Q< 0.9’ lists the number of (and percentage) of residues with an average occupancy less than 0.9.

Mol	Chain	Analysed	<RSRZ>	#RSRZ>2	OWAB(Å ²)	Q<0.9
1	D	277/282 (98%)	-0.26	0 100 100	29, 40, 63, 101	0
1	P	277/282 (98%)	-0.27	0 100 100	30, 40, 63, 92	0
All	All	554/564 (98%)	-0.27	0 100 100	29, 40, 63, 101	0

There are no RSRZ outliers to report.

6.2 Non-standard residues in protein, DNA, RNA chains [i](#)

There are no non-standard protein/DNA/RNA residues in this entry.

6.3 Carbohydrates [i](#)

There are no monosaccharides in this entry.

6.4 Ligands [i](#)

In the following table, the Atoms column lists the number of modelled atoms in the group and the number defined in the chemical component dictionary. The B-factors column lists the minimum, median, 95th percentile and maximum values of B factors of atoms in the group. The column labelled ‘Q< 0.9’ lists the number of atoms with occupancy less than 0.9.

Mol	Type	Chain	Res	Atoms	RSCC	RSR	B-factors(Å ²)	Q<0.9
5	EDO	D	309	4/4	0.82	0.14	65,67,73,77	0
6	1PE	D	314	16/16	0.82	0.68	136,201,228,231	0
5	EDO	P	307	4/4	0.83	0.11	67,72,76,80	0
4	HL4	P	304	12/12	0.85	0.25	48,69,77,78	12
9	PGE	D	319	10/10	0.85	0.17	63,83,101,101	0
9	PGE	P	316	10/10	0.86	0.19	62,86,94,98	0
5	EDO	P	308	4/4	0.87	0.12	61,68,75,79	0

Continued on next page...

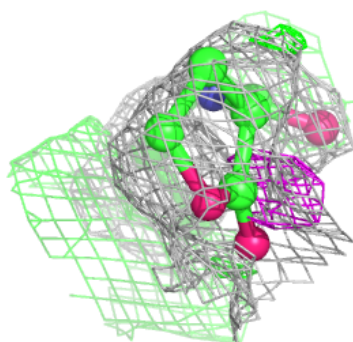
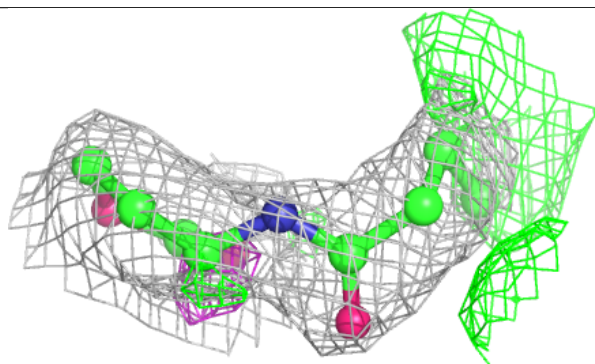
Continued from previous page...

Mol	Type	Chain	Res	Atoms	RSCC	RSR	B-factors(\AA^2)	Q<0.9
5	EDO	P	309	4/4	0.87	0.22	64,72,75,81	0
9	PGE	P	317	10/10	0.88	0.26	65,80,93,94	0
6	1PE	D	315	16/16	0.88	0.24	66,92,100,104	0
8	ACT	D	318	4/4	0.89	0.20	73,77,81,81	0
5	EDO	D	311	4/4	0.89	0.10	68,70,72,78	0
9	PGE	D	320	10/10	0.89	0.27	75,80,85,87	0
8	ACT	P	315	4/4	0.90	0.12	74,75,76,81	0
6	1PE	P	312	16/16	0.90	0.18	51,59,71,71	16
6	1PE	P	313	16/16	0.91	0.24	88,97,111,116	0
5	EDO	D	310	4/4	0.92	0.13	68,68,69,71	0
3	SO4	P	303	5/5	0.93	0.22	87,91,106,114	0
4	HL4	D	305	12/12	0.93	0.21	48,61,73,74	12
5	EDO	P	311	4/4	0.93	0.17	51,54,57,66	0
3	SO4	D	304	5/5	0.93	0.21	81,86,103,114	0
5	EDO	D	306	4/4	0.94	0.17	51,56,57,59	0
5	EDO	D	307	4/4	0.94	0.10	62,63,66,70	0
5	EDO	D	308	4/4	0.94	0.20	47,51,53,55	0
5	EDO	P	306	4/4	0.94	0.09	60,62,62,68	0
8	ACT	D	317	4/4	0.95	0.09	46,56,66,67	0
5	EDO	P	310	4/4	0.95	0.19	48,54,62,63	0
5	EDO	D	313	4/4	0.96	0.29	63,68,69,71	0
3	SO4	D	303	5/5	0.96	0.11	67,74,92,100	0
5	EDO	P	305	4/4	0.96	0.27	48,49,49,52	0
3	SO4	P	302	5/5	0.98	0.09	64,65,73,73	0
5	EDO	D	312	4/4	0.98	0.18	51,57,66,69	0
3	SO4	D	302	5/5	0.99	0.08	55,64,68,71	0
7	FE	D	316	1/1	1.00	0.12	42,42,42,42	0
2	CO	P	301	1/1	1.00	0.12	37,37,37,37	0
2	CO	D	301	1/1	1.00	0.14	37,37,37,37	0
7	FE	P	314	1/1	1.00	0.12	41,41,41,41	0

The following is a graphical depiction of the model fit to experimental electron density of all instances of the Ligand of Interest. In addition, ligands with molecular weight > 250 and outliers as shown on the geometry validation Tables will also be included. Each fit is shown from different orientation to approximate a three-dimensional view.

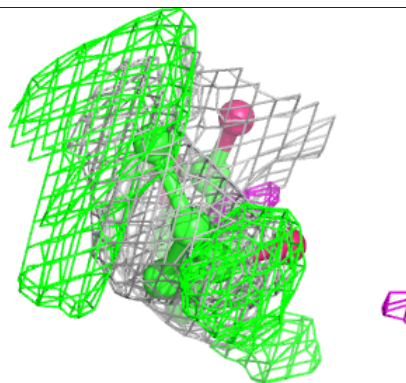
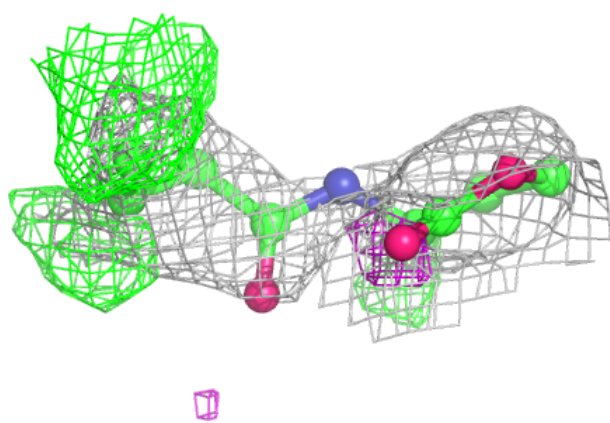
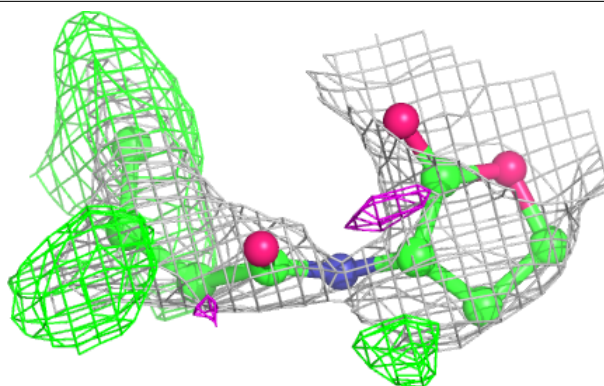
Electron density around HL4 P 304:

$2mF_o-DF_c$ (at 0.7 rmsd) in gray
 mF_o-DF_c (at 3 rmsd) in purple (negative)
and green (positive)



Electron density around HL4 D 305:

$2mF_o-DF_c$ (at 0.7 rmsd) in gray
 mF_o-DF_c (at 3 rmsd) in purple (negative)
and green (positive)



6.5 Other polymers [i](#)

There are no such residues in this entry.