



wwPDB X-ray Structure Validation Summary Report ⓘ

Jun 25, 2024 – 10:42 AM EDT

PDB ID : 6MTN
Title : Crystal Structure of HIV-1 BG505 SOSIP.664 Prefusion Env Trimer Bound to Small Molecule HIV-1 Entry Inhibitor Compound 484 in Complex with Human Antibodies 3H109L and 35O22 at 3.0 Angstrom
Authors : Lai, Y.-T.; Kwong, P.D.
Deposited on : 2018-10-20
Resolution : 2.50 Å(reported)

This is a wwPDB X-ray Structure Validation Summary Report for a publicly released PDB entry.

We welcome your comments at validation@mail.wwpdb.org

A user guide is available at

<https://www.wwpdb.org/validation/2017/XrayValidationReportHelp>

with specific help available everywhere you see the ⓘ symbol.

The types of validation reports are described at

<http://www.wwpdb.org/validation/2017/FAQs#types>.

The following versions of software and data (see [references ⓘ](#)) were used in the production of this report:

MolProbity	:	4.02b-467
Mogul	:	1.8.5 (274361), CSD as541be (2020)
Xtriage (Phenix)	:	1.13
EDS	:	2.37.1
buster-report	:	1.1.7 (2018)
Percentile statistics	:	20191225.v01 (using entries in the PDB archive December 25th 2019)
Refmac	:	5.8.0158
CCP4	:	7.0.044 (Gargrove)
Ideal geometry (proteins)	:	Engh & Huber (2001)
Ideal geometry (DNA, RNA)	:	Parkinson et al. (1996)
Validation Pipeline (wwPDB-VP)	:	2.37.1

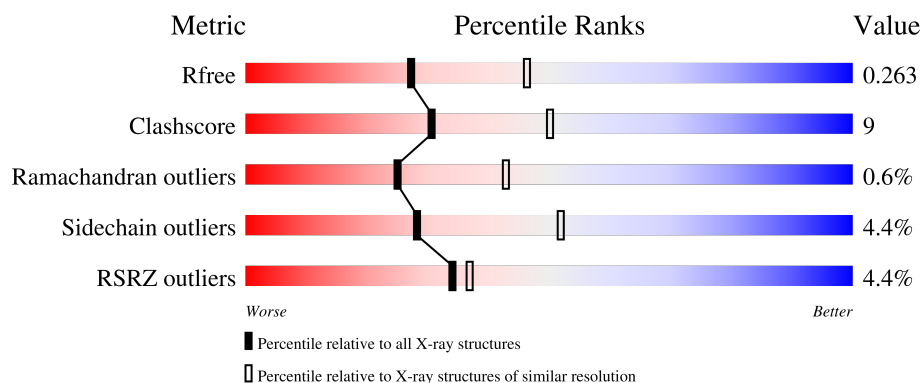
1 Overall quality at a glance

The following experimental techniques were used to determine the structure:

X-RAY DIFFRACTION

The reported resolution of this entry is 2.50 Å.

Percentile scores (ranging between 0-100) for global validation metrics of the entry are shown in the following graphic. The table shows the number of entries on which the scores are based.



Metric	Whole archive (#Entries)	Similar resolution (#Entries, resolution range(Å))
R_{free}	130704	4661 (2.50-2.50)
Clashscore	141614	5346 (2.50-2.50)
Ramachandran outliers	138981	5231 (2.50-2.50)
Sidechain outliers	138945	5233 (2.50-2.50)
RSRZ outliers	127900	4559 (2.50-2.50)

The table below summarises the geometric issues observed across the polymeric chains and their fit to the electron density. The red, orange, yellow and green segments of the lower bar indicate the fraction of residues that contain outliers for ≥ 3 , 2, 1 and 0 types of geometric quality criteria respectively. A grey segment represents the fraction of residues that are not modelled. The numeric value for each fraction is indicated below the corresponding segment, with a dot representing fractions $\leq 5\%$. The upper red bar (where present) indicates the fraction of residues that have poor fit to the electron density. The numeric value is given above the bar.

Mol	Chain	Length	Quality of chain
1	B	153	
2	D	134	
3	E	114	
4	G	481	

Continued on next page...

Continued from previous page...

Mol	Chain	Length	Quality of chain
5	H	244	 3% 67% 25% 7%
6	L	217	 % 72% 23% . .
7	A	2	 100%
7	J	2	 100%
7	K	2	 50% 50%
7	N	2	 100%
8	C	6	 33% 50% 17%
9	F	3	 100%
9	I	3	 33% 67%
10	M	10	 20% 70% 10%

2 Entry composition

There are 13 unique types of molecules in this entry. The entry contains 10157 atoms, of which 0 are hydrogens and 0 are deuteriums.

In the tables below, the ZeroOcc column contains the number of atoms modelled with zero occupancy, the AltConf column contains the number of residues with at least one atom in alternate conformation and the Trace column contains the number of residues modelled with at most 2 atoms.

- Molecule 1 is a protein called Envelope glycoprotein gp160.

Mol	Chain	Residues	Atoms					ZeroOcc	AltConf	Trace
1	B	128	Total	C	N	O	S	0	0	0
			1018	647	175	190	6			

There are 2 discrepancies between the modelled and reference sequences:

Chain	Residue	Modelled	Actual	Comment	Reference
B	559	PRO	ILE	engineered mutation	UNP Q2N0S6
B	605	CYS	THR	engineered mutation	UNP Q2N0S6

- Molecule 2 is a protein called 35O22 scFv heavy chain portion.

Mol	Chain	Residues	Atoms					ZeroOcc	AltConf	Trace
2	D	128	Total	C	N	O	S	0	0	0
			994	628	169	192	5			

- Molecule 3 is a protein called 35O22 scFv light chain portion.

Mol	Chain	Residues	Atoms					ZeroOcc	AltConf	Trace
3	E	105	Total	C	N	O	S	0	0	0
			805	506	133	160	6			

- Molecule 4 is a protein called Envelope glycoprotein gp160.

Mol	Chain	Residues	Atoms					ZeroOcc	AltConf	Trace
4	G	439	Total	C	N	O	S	0	0	0
			3461	2177	613	643	28			

There are 8 discrepancies between the modelled and reference sequences:

Chain	Residue	Modelled	Actual	Comment	Reference
G	137	ALA	ASN	engineered mutation	UNP Q2N0S6
G	332	ASN	THR	conflict	UNP Q2N0S6

Continued on next page...

Continued from previous page...

Chain	Residue	Modelled	Actual	Comment	Reference
G	501	CYS	ALA	conflict	UNP Q2N0S6
G	509	ARG	-	expression tag	UNP Q2N0S6
G	510	ARG	-	expression tag	UNP Q2N0S6
G	511	ARG	-	expression tag	UNP Q2N0S6
G	512	ARG	-	expression tag	UNP Q2N0S6
G	513	ARG	-	expression tag	UNP Q2N0S6

- Molecule 5 is a protein called 3H109L Fab heavy chain.

Mol	Chain	Residues	Atoms					ZeroOcc	AltConf	Trace
5	H	226	Total	C	N	O	S	0	0	0
			1715	1093	278	338	6			

- Molecule 6 is a protein called 3H109L Fab light chain.

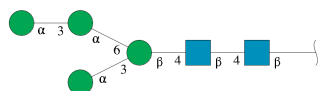
Mol	Chain	Residues	Atoms					ZeroOcc	AltConf	Trace
6	L	211	Total	C	N	O	S	0	0	0
			1604	1009	276	312	7			

- Molecule 7 is an oligosaccharide called 2-acetamido-2-deoxy-beta-D-glucopyranose-(1-4)-2-acetamido-2-deoxy-beta-D-glucopyranose.



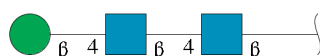
Mol	Chain	Residues	Atoms				ZeroOcc	AltConf	Trace
7	A	2	Total	C	N	O	0	0	0
			28	16	2	10			
7	J	2	Total	C	N	O	0	0	0
			28	16	2	10			
7	K	2	Total	C	N	O	0	0	0
			28	16	2	10			
7	N	2	Total	C	N	O	0	0	0
			28	16	2	10			

- Molecule 8 is an oligosaccharide called alpha-D-mannopyranose-(1-3)-alpha-D-mannopyranose-(1-6)-[alpha-D-mannopyranose-(1-3)]beta-D-mannopyranose-(1-4)-2-acetamido-2-deoxy-beta-D-glucopyranose-(1-4)-2-acetamido-2-deoxy-beta-D-glucopyranose.



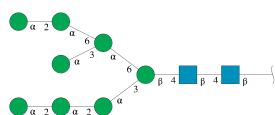
Mol	Chain	Residues	Atoms				ZeroOcc	AltConf	Trace
8	C	6	Total	C	N	O	0	0	0
			72	40	2	30			

- Molecule 9 is an oligosaccharide called beta-D-mannopyranose-(1-4)-2-acetamido-2-deoxy-beta-D-glucopyranose-(1-4)-2-acetamido-2-deoxy-beta-D-glucopyranose.



Mol	Chain	Residues	Atoms				ZeroOcc	AltConf	Trace
9	F	3	Total	C	N	O	0	0	0
			39	22	2	15			
9	I	3	Total	C	N	O	0	0	0
			39	22	2	15			

- Molecule 10 is an oligosaccharide called alpha-D-mannopyranose-(1-2)-alpha-D-mannopyranose-(1-2)-alpha-D-mannopyranose-(1-3)-[alpha-D-mannopyranose-(1-2)-alpha-D-mannopyranose-(1-6)-[alpha-D-mannopyranose-(1-3)]alpha-D-mannopyranose-(1-6)]beta-D-mannopyranose-(1-4)-2-acetamido-2-deoxy-beta-D-glucopyranose-(1-4)-2-acetamido-2-deoxy-beta-D-glucopyranose.



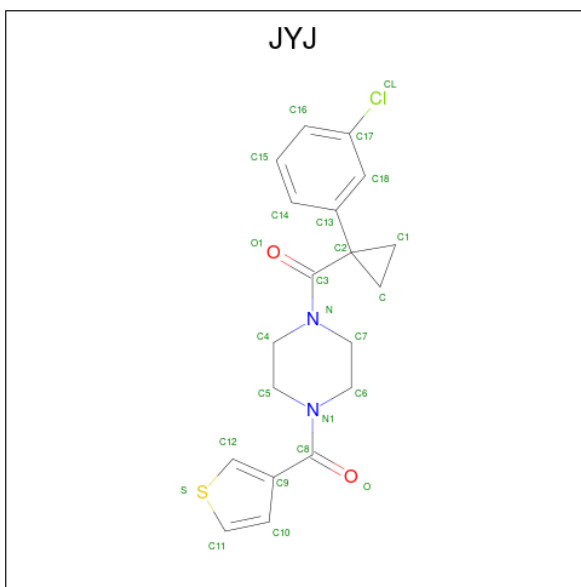
Mol	Chain	Residues	Atoms				ZeroOcc	AltConf	Trace
10	M	10	Total	C	N	O	0	0	0
			116	64	2	50			

- Molecule 11 is 2-acetamido-2-deoxy-beta-D-glucopyranose (three-letter code: NAG) (formula: C₈H₁₅NO₆).



Mol	Chain	Residues	Atoms				ZeroOcc	AltConf
11	B	1	Total	C	N	O	0	0
			14	8	1	5		
11	B	1	Total	C	N	O	0	0
			14	8	1	5		
11	G	1	Total	C	N	O	0	0
			14	8	1	5		
11	G	1	Total	C	N	O	0	0
			14	8	1	5		
11	G	1	Total	C	N	O	0	0
			14	8	1	5		
11	G	1	Total	C	N	O	0	0
			14	8	1	5		
11	G	1	Total	C	N	O	0	0
			14	8	1	5		
11	G	1	Total	C	N	O	0	0
			14	8	1	5		
11	G	1	Total	C	N	O	0	0
			14	8	1	5		

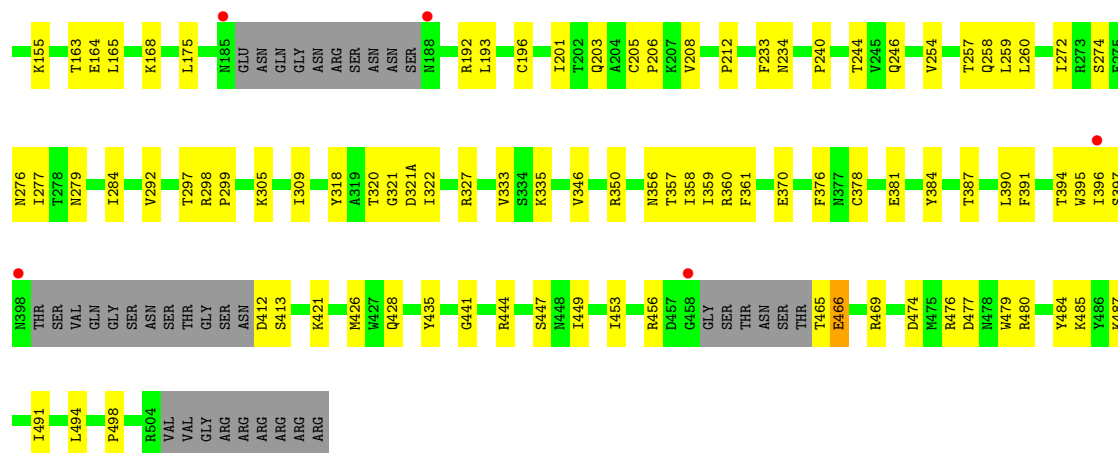
- Molecule 12 is {4-[1-(3-chlorophenyl)cyclopropane-1-carbonyl]piperazin-1-yl}(thiophen-3-yl)methanone (three-letter code: JYJ) (formula: C₁₉H₁₉ClN₂O₂S) (labeled as "Ligand of Interest" by depositor).



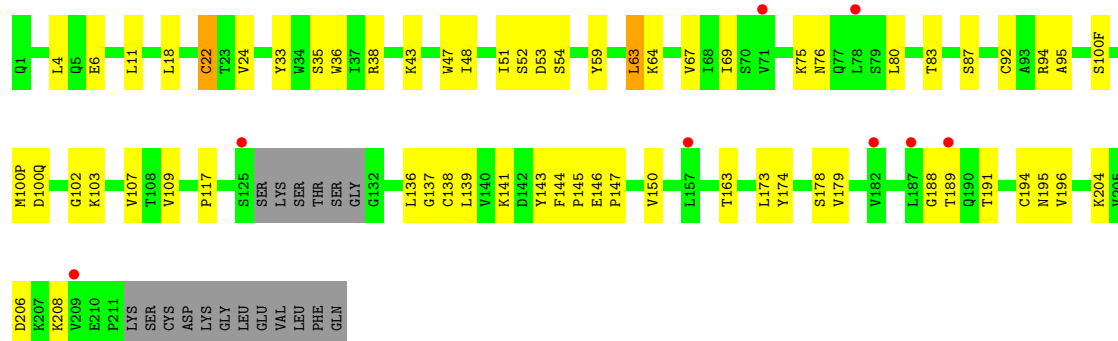
Mol	Chain	Residues	Atoms						ZeroOcc	AltConf
12	G	1	Total	C	Cl	N	O	S	0	0
			25	19	1	2	2	1		

- Molecule 13 is water.

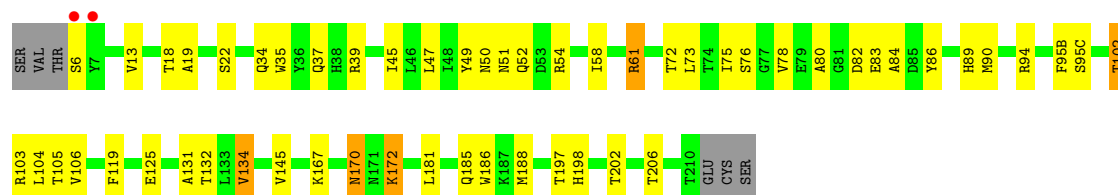
Mol	Chain	Residues	Atoms		ZeroOcc	AltConf
13	B	1	Total	O	0	0
			1	1		
13	G	1	Total	O	0	0
			1	1		
13	L	1	Total	O	0	0
			1	1		



• Molecule 5: 3H109L Fab heavy chain



• Molecule 6: 3H109L Fab light chain



• Molecule 7: 2-acetamido-2-deoxy-beta-D-glucopyranose-(1-4)-2-acetamido-2-deoxy-beta-D-glucopyranose



• Molecule 7: 2-acetamido-2-deoxy-beta-D-glucopyranose-(1-4)-2-acetamido-2-deoxy-beta-D-glucopyranose

Chain J:  100%


MAG1
MAG2

- Molecule 7: 2-acetamido-2-deoxy-beta-D-glucopyranose-(1-4)-2-acetamido-2-deoxy-beta-D-glucopyranose

Chain K:  50% 50%

MAG1
MAG2

- Molecule 7: 2-acetamido-2-deoxy-beta-D-glucopyranose-(1-4)-2-acetamido-2-deoxy-beta-D-glucopyranose

Chain N:  100%

MAG1
MAG2

- Molecule 8: alpha-D-mannopyranose-(1-3)-alpha-D-mannopyranose-(1-6)-[alpha-D-mannopyranose-(1-3)]beta-D-mannopyranose-(1-4)-2-acetamido-2-deoxy-beta-D-glucopyranose-(1-4)-2-acetamido-2-deoxy-beta-D-glucopyranose

Chain C:  33% 50% 17%

MAG1
MAG2
BMA3
MAN4
MAN5
MAN6

- Molecule 9: beta-D-mannopyranose-(1-4)-2-acetamido-2-deoxy-beta-D-glucopyranose-(1-4)-2-acetamido-2-deoxy-beta-D-glucopyranose

Chain F:  100%

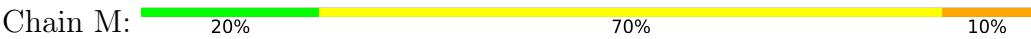
MAG1
MAG2
BMA3

- Molecule 9: beta-D-mannopyranose-(1-4)-2-acetamido-2-deoxy-beta-D-glucopyranose-(1-4)-2-acetamido-2-deoxy-beta-D-glucopyranose

Chain I:  33% 67%

MAG1
MAG2
BMA3

- Molecule 10: alpha-D-mannopyranose-(1-2)-alpha-D-mannopyranose-(1-2)-alpha-D-mannopyranose-(1-3)-[alpha-D-mannopyranose-(1-2)-alpha-D-mannopyranose-(1-6)-[alpha-D-mannopyranose-(1-3)]alpha-D-mannopyranose-(1-6)]beta-D-mannopyranose-(1-4)-2-acetamido-2-deoxy-beta-D-glucopyranose-(1-4)-2-acetamido-2-deoxy-beta-D-glucopyranose



MAN1
MAN2
MAN3
MAN4
MAN5
MAN6
MAN7
MAN8
MAN9
MAN10

4 Data and refinement statistics

Property	Value	Source
Space group	P 63	Depositor
Cell constants a, b, c, α , β , γ	131.50Å 131.50Å 315.74Å 90.00° 90.00° 120.00°	Depositor
Resolution (Å)	43.04 – 2.50 43.04 – 2.48	Depositor EDS
% Data completeness (in resolution range)	39.1 (43.04-2.50) 38.2 (43.04-2.48)	Depositor EDS
R_{merge}	0.13	Depositor
R_{sym}	(Not available)	Depositor
$\langle I/\sigma(I) \rangle$ ¹	2.66 (at 2.48Å)	Xtriage
Refinement program	PHENIX 1.13_2998	Depositor
R, R_{free}	0.223 , 0.263 0.223 , 0.263	Depositor DCC
R_{free} test set	2077 reflections (5.00%)	wwPDB-VP
Wilson B-factor (Å ²)	39.5	Xtriage
Anisotropy	0.088	Xtriage
Bulk solvent k_{sol} (e/Å ³), B_{sol} (Å ²)	0.27 , 31.2	EDS
L-test for twinning ²	$\langle L \rangle = 0.49$, $\langle L^2 \rangle = 0.32$	Xtriage
Estimated twinning fraction	0.057 for h,-h-k,-l	Xtriage
F_o, F_c correlation	0.86	EDS
Total number of atoms	10157	wwPDB-VP
Average B, all atoms (Å ²)	49.0	wwPDB-VP

Xtriage's analysis on translational NCS is as follows: *The largest off-origin peak in the Patterson function is 2.15% of the height of the origin peak. No significant pseudotranslation is detected.*

¹Intensities estimated from amplitudes.

²Theoretical values of $\langle |L| \rangle$, $\langle L^2 \rangle$ for acentric reflections are 0.5, 0.333 respectively for untwinned datasets, and 0.375, 0.2 for perfectly twinned datasets.

5 Model quality

5.1 Standard geometry

Bond lengths and bond angles in the following residue types are not validated in this section: NAG, BMA, JYJ, MAN

The Z score for a bond length (or angle) is the number of standard deviations the observed value is removed from the expected value. A bond length (or angle) with $|Z| > 5$ is considered an outlier worth inspection. RMSZ is the root-mean-square of all Z scores of the bond lengths (or angles).

Mol	Chain	Bond lengths		Bond angles	
		RMSZ	# Z >5	RMSZ	# Z >5
1	B	0.23	0/1036	0.41	0/1404
2	D	0.25	0/1021	0.47	0/1390
3	E	0.25	0/829	0.48	0/1133
4	G	0.25	0/3532	0.46	0/4791
5	H	0.25	0/1758	0.48	0/2397
6	L	0.24	0/1647	0.45	0/2247
All	All	0.25	0/9823	0.46	0/13362

There are no bond length outliers.

There are no bond angle outliers.

There are no chirality outliers.

There are no planarity outliers.

5.2 Too-close contacts

In the following table, the Non-H and H(model) columns list the number of non-hydrogen atoms and hydrogen atoms in the chain respectively. The H(added) column lists the number of hydrogen atoms added and optimized by MolProbity. The Clashes column lists the number of clashes within the asymmetric unit, whereas Symm-Clashes lists symmetry-related clashes.

Mol	Chain	Non-H	H(model)	H(added)	Clashes	Symm-Clashes
1	B	1018	0	1007	18	0
2	D	994	0	952	20	0
3	E	805	0	752	13	0
4	G	3461	0	3408	72	0
5	H	1715	0	1687	35	0
6	L	1604	0	1553	32	0
7	A	28	0	25	0	0

Continued on next page...

Continued from previous page...

Mol	Chain	Non-H	H(model)	H(added)	Clashes	Symm-Clashes
7	J	28	0	25	0	0
7	K	28	0	25	0	0
7	N	28	0	25	0	0
8	C	72	0	61	1	0
9	F	39	0	34	0	0
9	I	39	0	34	1	0
10	M	116	0	97	1	0
11	B	28	0	26	1	0
11	G	126	0	117	1	0
12	G	25	0	0	0	0
13	B	1	0	0	0	0
13	G	1	0	0	0	0
13	L	1	0	0	0	0
All	All	10157	0	9828	184	0

The all-atom clashscore is defined as the number of clashes found per 1000 atoms (including hydrogen atoms). The all-atom clashscore for this structure is 9.

The worst 5 of 184 close contacts within the same asymmetric unit are listed below, sorted by their clash magnitude.

Atom-1	Atom-2	Interatomic distance (Å)	Clash overlap (Å)
4:G:292:VAL:HG23	4:G:449:ILE:HB	1.66	0.78
4:G:274:SER:HB3	4:G:277:ILE:HG12	1.65	0.77
5:H:137:GLY:HA3	5:H:179:VAL:HG12	1.72	0.72
6:L:83:GLU:OE1	6:L:167:LYS:NZ	2.23	0.71
4:G:163:THR:HG23	4:G:165:LEU:H	1.56	0.70

There are no symmetry-related clashes.

5.3 Torsion angles [i](#)

5.3.1 Protein backbone [i](#)

In the following table, the Percentiles column shows the percent Ramachandran outliers of the chain as a percentile score with respect to all X-ray entries followed by that with respect to entries of similar resolution.

The Analysed column shows the number of residues for which the backbone conformation was analysed, and the total number of residues.

Mol	Chain	Analysed	Favoured	Allowed	Outliers	Percentiles	
1	B	124/153 (81%)	117 (94%)	6 (5%)	1 (1%)	19	35
2	D	126/134 (94%)	111 (88%)	14 (11%)	1 (1%)	19	35
3	E	103/114 (90%)	82 (80%)	20 (19%)	1 (1%)	15	28
4	G	429/481 (89%)	401 (94%)	26 (6%)	2 (0%)	29	48
5	H	222/244 (91%)	202 (91%)	19 (9%)	1 (0%)	29	48
6	L	209/217 (96%)	196 (94%)	12 (6%)	1 (0%)	29	48
All	All	1213/1343 (90%)	1109 (91%)	97 (8%)	7 (1%)	25	43

5 of 7 Ramachandran outliers are listed below:

Mol	Chain	Res	Type
4	G	397	SER
2	D	82(B)	ASN
3	E	52	ASN
6	L	51	ASN
1	B	548	ILE

5.3.2 Protein sidechains ⓘ

In the following table, the Percentiles column shows the percent sidechain outliers of the chain as a percentile score with respect to all X-ray entries followed by that with respect to entries of similar resolution.

The Analysed column shows the number of residues for which the sidechain conformation was analysed, and the total number of residues.

Mol	Chain	Analysed	Rotameric	Outliers	Percentiles	
1	B	110/129 (85%)	107 (97%)	3 (3%)	44	71
2	D	107/112 (96%)	101 (94%)	6 (6%)	21	40
3	E	92/100 (92%)	83 (90%)	9 (10%)	8	15
4	G	391/427 (92%)	377 (96%)	14 (4%)	35	61
5	H	196/212 (92%)	189 (96%)	7 (4%)	35	61
6	L	175/181 (97%)	167 (95%)	8 (5%)	27	50
All	All	1071/1161 (92%)	1024 (96%)	47 (4%)	28	52

5 of 47 residues with a non-rotameric sidechain are listed below:

Mol	Chain	Res	Type
4	G	412	ASP

Continued on next page...

Continued from previous page...

Mol	Chain	Res	Type
5	H	75	LYS
4	G	447	SER
5	H	22	CYS
5	H	136	LEU

Sometimes sidechains can be flipped to improve hydrogen bonding and reduce clashes. All (1) such sidechains are listed below:

Mol	Chain	Res	Type
4	G	246	GLN

5.3.3 RNA ⓘ

There are no RNA molecules in this entry.

5.4 Non-standard residues in protein, DNA, RNA chains ⓘ

There are no non-standard protein/DNA/RNA residues in this entry.

5.5 Carbohydrates ⓘ

30 monosaccharides are modelled in this entry.

In the following table, the Counts columns list the number of bonds (or angles) for which Mogul statistics could be retrieved, the number of bonds (or angles) that are observed in the model and the number of bonds (or angles) that are defined in the Chemical Component Dictionary. The Link column lists molecule types, if any, to which the group is linked. The Z score for a bond length (or angle) is the number of standard deviations the observed value is removed from the expected value. A bond length (or angle) with $|Z| > 2$ is considered an outlier worth inspection. RMSZ is the root-mean-square of all Z scores of the bond lengths (or angles).

Mol	Type	Chain	Res	Link	Bond lengths			Bond angles		
					Counts	RMSZ	$\# Z > 2$	Counts	RMSZ	$\# Z > 2$
7	NAG	A	1	2,7	14,14,15	0.33	0	17,19,21	0.41	0
7	NAG	A	2	7	14,14,15	0.21	0	17,19,21	0.55	0
8	NAG	C	1	4,8	14,14,15	0.27	0	17,19,21	0.55	0
8	NAG	C	2	8	14,14,15	0.36	0	17,19,21	1.30	2 (11%)
8	BMA	C	3	8	11,11,12	0.74	0	15,15,17	0.79	0
8	MAN	C	4	8	11,11,12	1.17	2 (18%)	15,15,17	1.67	4 (26%)
8	MAN	C	5	8	11,11,12	1.56	2 (18%)	15,15,17	2.24	4 (26%)
8	MAN	C	6	8	11,11,12	0.75	0	15,15,17	1.03	2 (13%)

Mol	Type	Chain	Res	Link	Bond lengths			Bond angles		
					Counts	RMSZ	# Z > 2	Counts	RMSZ	# Z > 2
9	NAG	F	1	9,4	14,14,15	0.41	0	17,19,21	0.50	0
9	NAG	F	2	9	14,14,15	0.24	0	17,19,21	0.50	0
9	BMA	F	3	9	11,11,12	0.65	0	15,15,17	0.70	0
9	NAG	I	1	9,4	14,14,15	0.32	0	17,19,21	0.53	0
9	NAG	I	2	9	14,14,15	0.28	0	17,19,21	0.55	0
9	BMA	I	3	9	11,11,12	0.54	0	15,15,17	0.73	0
7	NAG	J	1	7,4	14,14,15	0.39	0	17,19,21	0.45	0
7	NAG	J	2	7	14,14,15	0.27	0	17,19,21	0.42	0
7	NAG	K	1	7,4	14,14,15	0.32	0	17,19,21	0.49	0
7	NAG	K	2	7	14,14,15	0.25	0	17,19,21	0.59	1 (5%)
10	NAG	M	1	10,4	14,14,15	0.34	0	17,19,21	1.46	2 (11%)
10	MAN	M	10	10	11,11,12	1.12	1 (9%)	15,15,17	1.19	2 (13%)
10	NAG	M	2	10	14,14,15	0.34	0	17,19,21	0.43	0
10	BMA	M	3	10	11,11,12	0.83	0	15,15,17	0.94	0
10	MAN	M	4	10	11,11,12	0.74	1 (9%)	15,15,17	1.34	2 (13%)
10	MAN	M	5	10	11,11,12	0.64	0	15,15,17	0.96	1 (6%)
10	MAN	M	6	10	11,11,12	0.74	0	15,15,17	0.95	2 (13%)
10	MAN	M	7	10	11,11,12	0.82	0	15,15,17	0.96	1 (6%)
10	MAN	M	8	10	11,11,12	0.71	0	15,15,17	1.04	1 (6%)
10	MAN	M	9	10	11,11,12	0.70	0	15,15,17	1.43	2 (13%)
7	NAG	N	1	7,4	14,14,15	0.21	0	17,19,21	0.64	0
7	NAG	N	2	7	14,14,15	0.19	0	17,19,21	0.61	0

In the following table, the Chirals column lists the number of chiral outliers, the number of chiral centers analysed, the number of these observed in the model and the number defined in the Chemical Component Dictionary. Similar counts are reported in the Torsion and Rings columns. '-' means no outliers of that kind were identified.

Mol	Type	Chain	Res	Link	Chirals	Torsions	Rings
7	NAG	A	1	2,7	-	4/6/23/26	0/1/1/1
7	NAG	A	2	7	-	4/6/23/26	0/1/1/1
8	NAG	C	1	4,8	-	0/6/23/26	0/1/1/1
8	NAG	C	2	8	-	5/6/23/26	0/1/1/1
8	BMA	C	3	8	-	2/2/19/22	0/1/1/1
8	MAN	C	4	8	-	0/2/19/22	0/1/1/1
8	MAN	C	5	8	-	1/2/19/22	0/1/1/1
8	MAN	C	6	8	-	0/2/19/22	0/1/1/1
9	NAG	F	1	9,4	-	2/6/23/26	0/1/1/1
9	NAG	F	2	9	-	0/6/23/26	0/1/1/1

Continued on next page...

Continued from previous page...

Mol	Type	Chain	Res	Link	Chirals	Torsions	Rings
9	BMA	F	3	9	-	0/2/19/22	0/1/1/1
9	NAG	I	1	9,4	-	2/6/23/26	0/1/1/1
9	NAG	I	2	9	-	2/6/23/26	0/1/1/1
9	BMA	I	3	9	-	1/2/19/22	0/1/1/1
7	NAG	J	1	7,4	-	2/6/23/26	0/1/1/1
7	NAG	J	2	7	-	2/6/23/26	0/1/1/1
7	NAG	K	1	7,4	-	2/6/23/26	0/1/1/1
7	NAG	K	2	7	-	2/6/23/26	0/1/1/1
10	NAG	M	1	10,4	-	3/6/23/26	0/1/1/1
10	MAN	M	10	10	-	0/2/19/22	0/1/1/1
10	NAG	M	2	10	-	2/6/23/26	0/1/1/1
10	BMA	M	3	10	-	0/2/19/22	0/1/1/1
10	MAN	M	4	10	-	2/2/19/22	0/1/1/1
10	MAN	M	5	10	-	0/2/19/22	0/1/1/1
10	MAN	M	6	10	-	0/2/19/22	0/1/1/1
10	MAN	M	7	10	-	0/2/19/22	0/1/1/1
10	MAN	M	8	10	-	0/2/19/22	0/1/1/1
10	MAN	M	9	10	-	2/2/19/22	0/1/1/1
7	NAG	N	1	7,4	-	0/6/23/26	0/1/1/1
7	NAG	N	2	7	-	0/6/23/26	0/1/1/1

The worst 5 of 6 bond length outliers are listed below:

Mol	Chain	Res	Type	Atoms	Z	Observed(Å)	Ideal(Å)
8	C	5	MAN	C1-C2	3.91	1.61	1.52
8	C	5	MAN	O5-C1	2.98	1.48	1.43
8	C	4	MAN	C2-C3	2.51	1.56	1.52
8	C	4	MAN	C1-C2	2.50	1.57	1.52
10	M	4	MAN	C1-C2	2.10	1.57	1.52

The worst 5 of 26 bond angle outliers are listed below:

Mol	Chain	Res	Type	Atoms	Z	Observed(°)	Ideal(°)
8	C	5	MAN	C1-O5-C5	6.70	121.27	112.19
10	M	9	MAN	C1-O5-C5	4.64	118.48	112.19
10	M	1	NAG	C2-N2-C7	4.58	129.43	122.90
8	C	4	MAN	C1-C2-C3	4.42	115.11	109.67
8	C	2	NAG	C2-N2-C7	4.32	129.05	122.90

There are no chirality outliers.

5 of 40 torsion outliers are listed below:

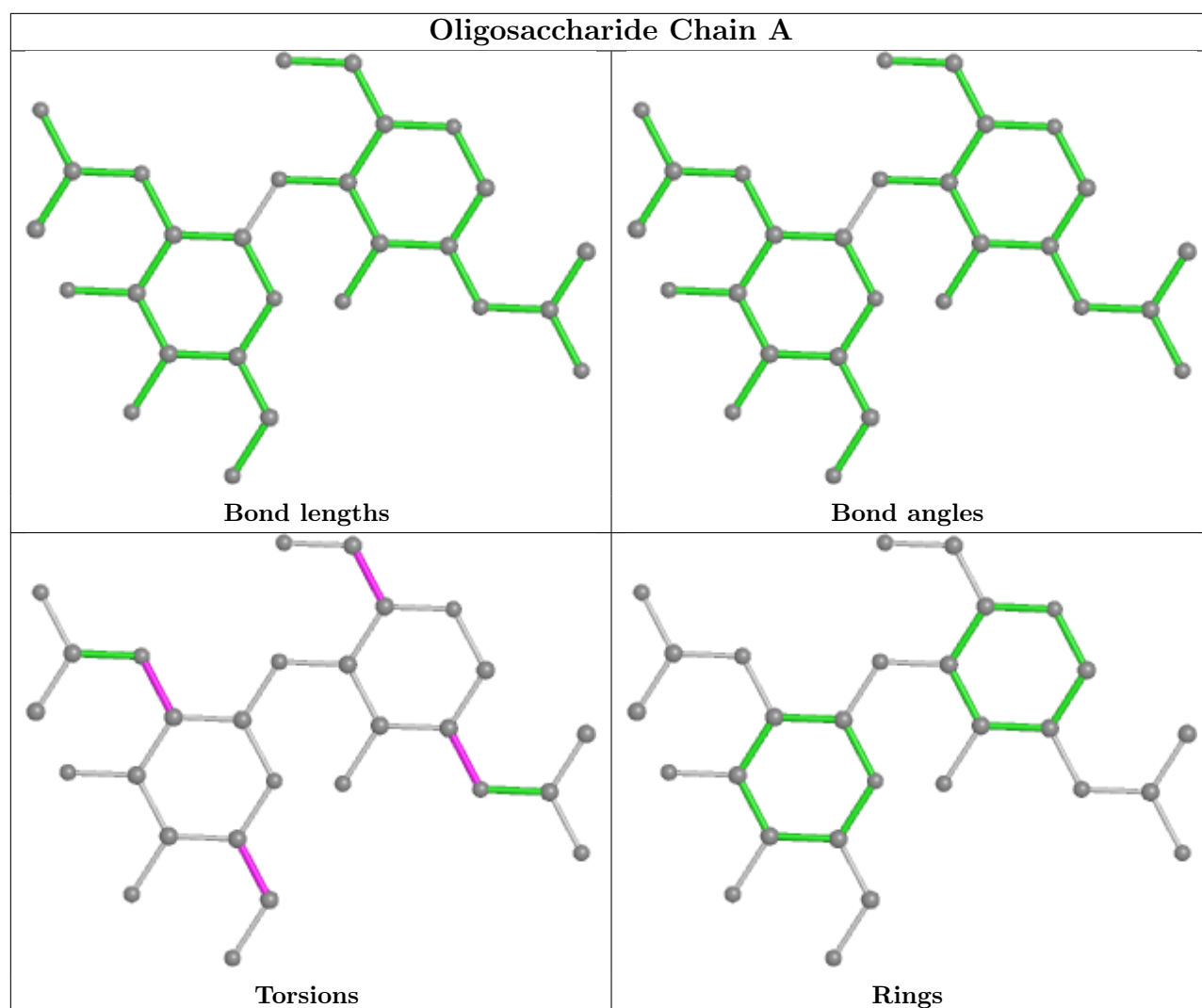
Mol	Chain	Res	Type	Atoms
8	C	3	BMA	O5-C5-C6-O6
7	J	1	NAG	O5-C5-C6-O6
10	M	2	NAG	O5-C5-C6-O6
8	C	3	BMA	C4-C5-C6-O6
8	C	2	NAG	O5-C5-C6-O6

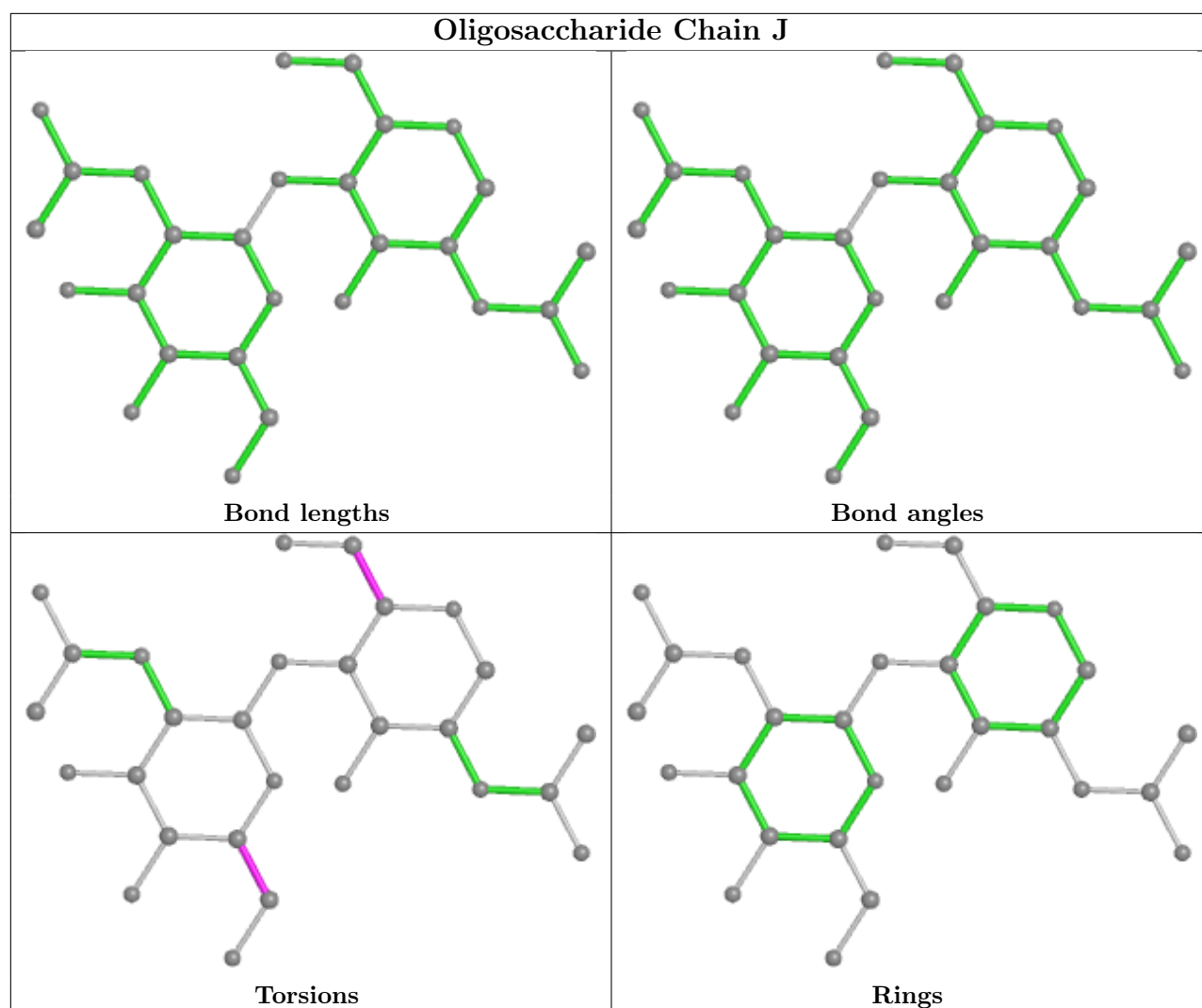
There are no ring outliers.

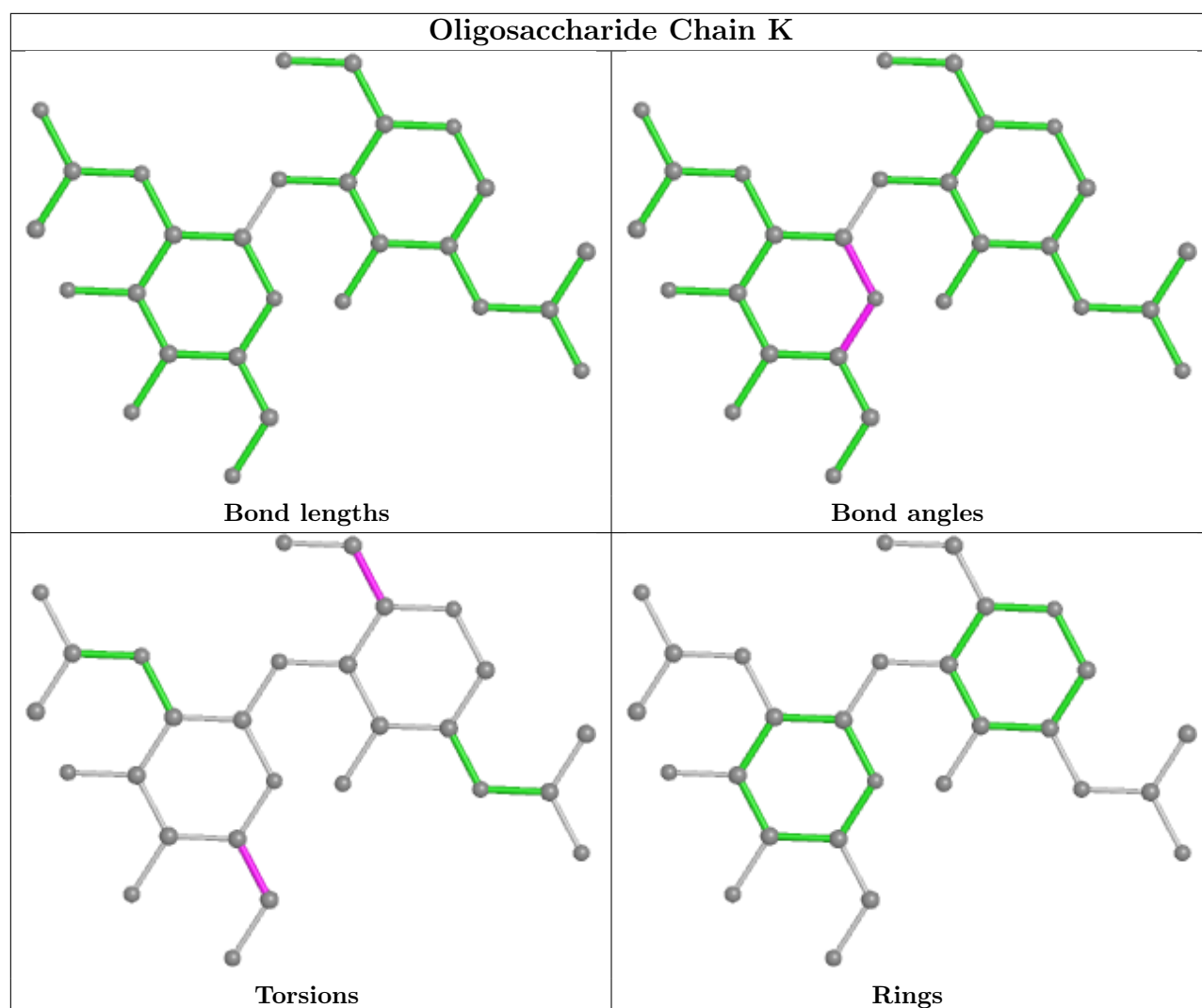
4 monomers are involved in 3 short contacts:

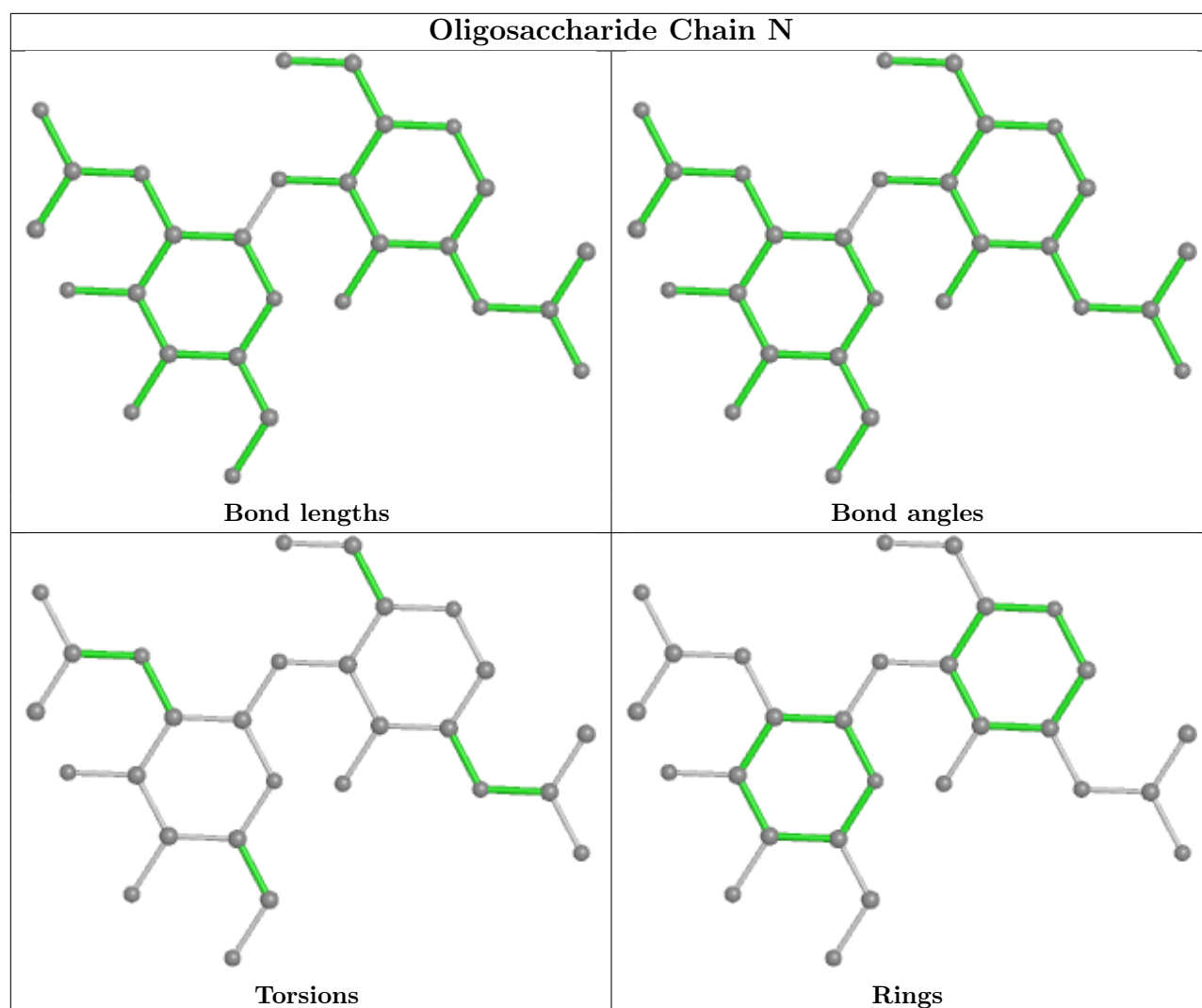
Mol	Chain	Res	Type	Clashes	Symm-Clashes
9	I	1	NAG	1	0
10	M	1	NAG	1	0
9	I	2	NAG	1	0
8	C	2	NAG	1	0

The following is a two-dimensional graphical depiction of Mogul quality analysis of bond lengths, bond angles, torsion angles, and ring geometry for oligosaccharide.

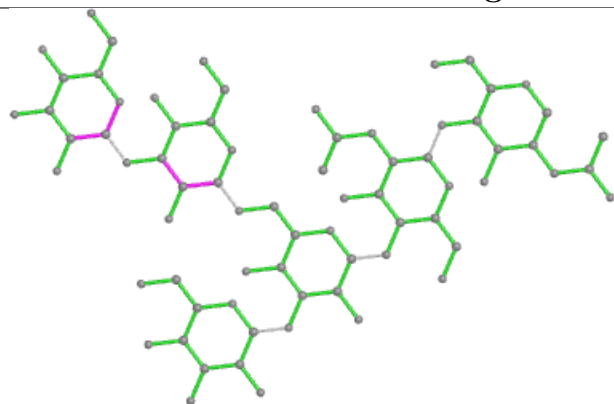




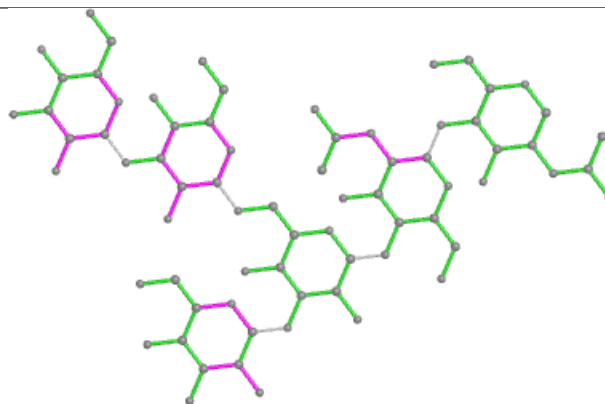




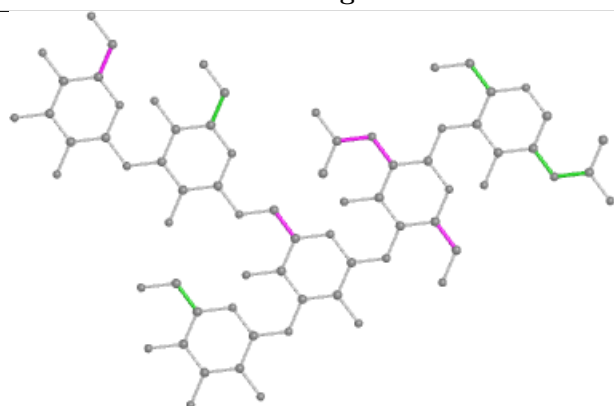
Oligosaccharide Chain C



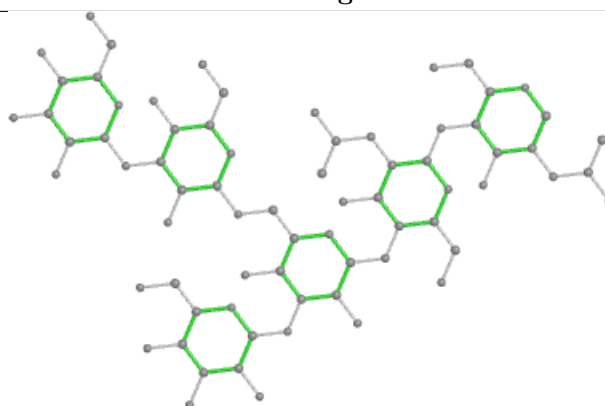
Bond lengths



Bond angles

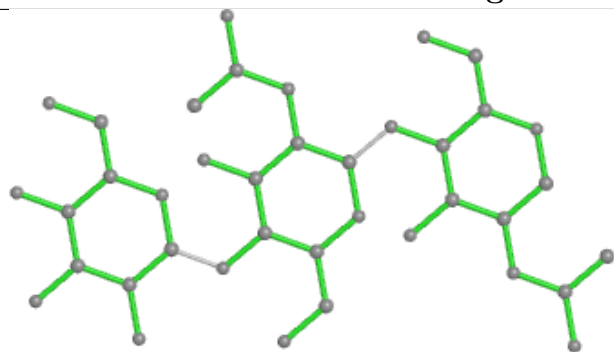


Torsions

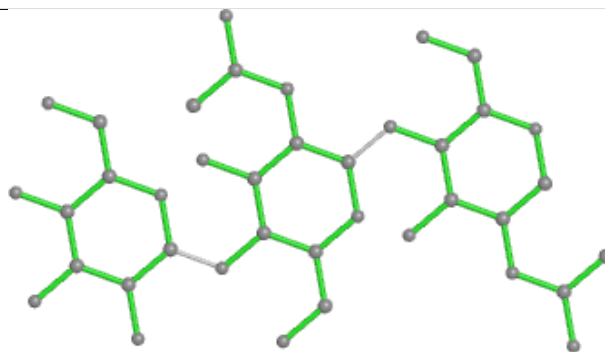


Rings

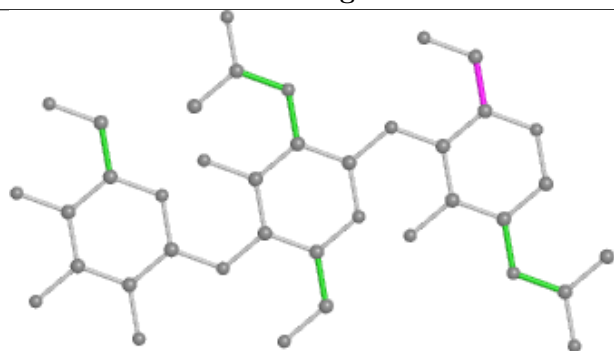
Oligosaccharide Chain F



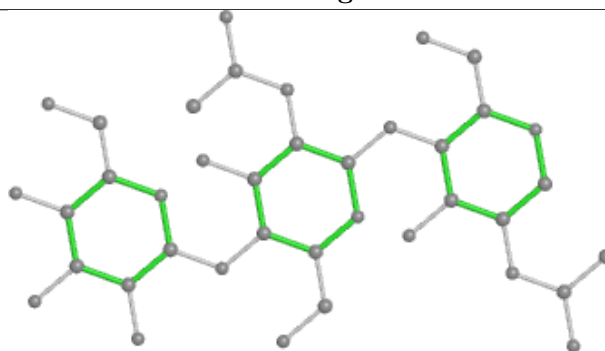
Bond lengths



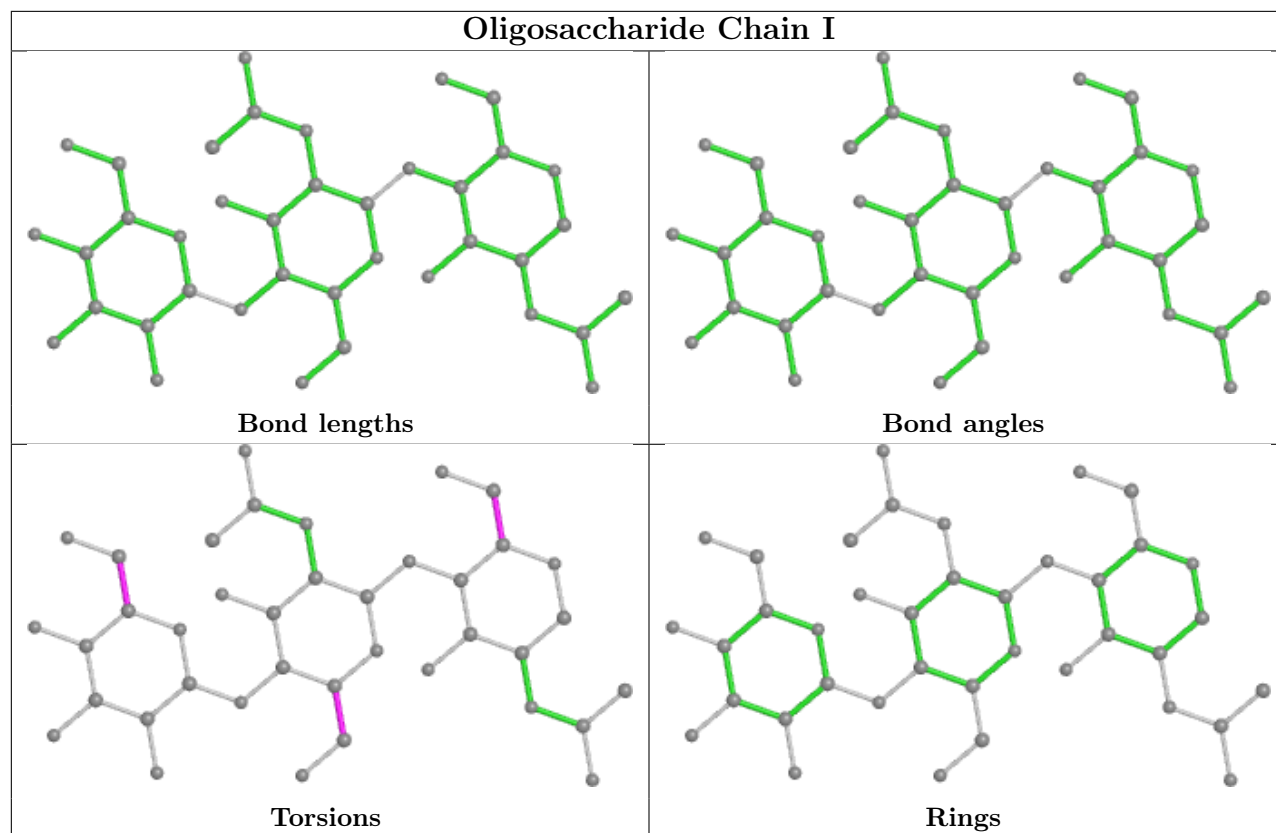
Bond angles

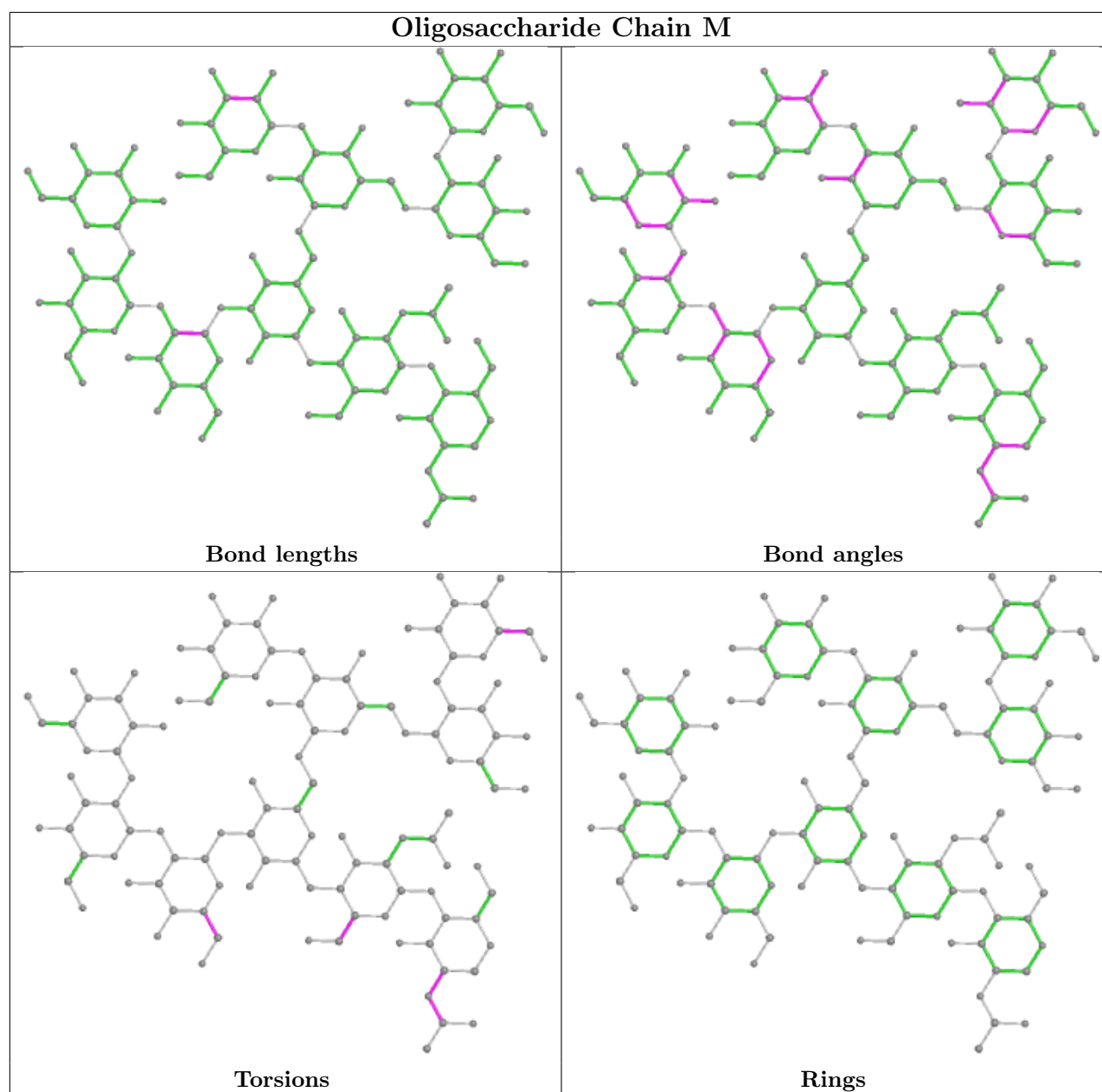


Torsions



Rings





5.6 Ligand geometry [i](#)

12 ligands are modelled in this entry.

In the following table, the Counts columns list the number of bonds (or angles) for which Mogul statistics could be retrieved, the number of bonds (or angles) that are observed in the model and the number of bonds (or angles) that are defined in the Chemical Component Dictionary. The Link column lists molecule types, if any, to which the group is linked. The Z score for a bond length (or angle) is the number of standard deviations the observed value is removed from the expected value. A bond length (or angle) with $|Z| > 2$ is considered an outlier worth inspection. RMSZ is the root-mean-square of all Z scores of the bond lengths (or angles).

Mol	Type	Chain	Res	Link	Bond lengths			Bond angles		
					Counts	RMSZ	# Z > 2	Counts	RMSZ	# Z > 2
12	JYJ	G	638	-	27,28,28	1.30	2 (7%)	33,41,41	2.36	7 (21%)
11	NAG	G	633	4	14,14,15	0.25	0	17,19,21	0.50	0
11	NAG	B	701	1	14,14,15	0.35	0	17,19,21	0.56	0
11	NAG	G	634	4	14,14,15	0.33	0	17,19,21	0.65	1 (5%)
11	NAG	G	635	4	14,14,15	0.19	0	17,19,21	0.47	0
11	NAG	G	613	4	14,14,15	0.30	0	17,19,21	0.42	0
11	NAG	G	632	4	14,14,15	0.27	0	17,19,21	0.47	0
11	NAG	B	702	1	14,14,15	0.24	0	17,19,21	0.45	0
11	NAG	G	612	4	14,14,15	0.28	0	17,19,21	0.47	0
11	NAG	G	611	4	14,14,15	0.34	0	17,19,21	0.47	0
11	NAG	G	617	4	14,14,15	0.22	0	17,19,21	0.45	0
11	NAG	G	607	4	14,14,15	0.26	0	17,19,21	0.56	0

In the following table, the Chirals column lists the number of chiral outliers, the number of chiral centers analysed, the number of these observed in the model and the number defined in the Chemical Component Dictionary. Similar counts are reported in the Torsion and Rings columns. '-' means no outliers of that kind were identified.

Mol	Type	Chain	Res	Link	Chirals	Torsions	Rings
12	JYJ	G	638	-	-	10/22/38/38	0/4/4/4
11	NAG	G	633	4	-	0/6/23/26	0/1/1/1
11	NAG	B	701	1	-	2/6/23/26	0/1/1/1
11	NAG	G	634	4	-	2/6/23/26	0/1/1/1
11	NAG	G	635	4	-	0/6/23/26	0/1/1/1
11	NAG	G	613	4	-	2/6/23/26	0/1/1/1
11	NAG	G	632	4	-	2/6/23/26	0/1/1/1
11	NAG	B	702	1	-	2/6/23/26	0/1/1/1
11	NAG	G	612	4	-	2/6/23/26	0/1/1/1
11	NAG	G	611	4	-	2/6/23/26	0/1/1/1
11	NAG	G	617	4	-	2/6/23/26	0/1/1/1
11	NAG	G	607	4	-	2/6/23/26	0/1/1/1

All (2) bond length outliers are listed below:

Mol	Chain	Res	Type	Atoms	Z	Observed(Å)	Ideal(Å)
12	G	638	JYJ	C12-C9	5.22	1.40	1.37
12	G	638	JYJ	C17-CL	2.40	1.79	1.74

The worst 5 of 8 bond angle outliers are listed below:

Mol	Chain	Res	Type	Atoms	Z	Observed(°)	Ideal(°)
12	G	638	JYJ	C9-C12-S	-9.12	106.41	112.29
12	G	638	JYJ	C13-C2-C3	5.72	121.77	113.91
12	G	638	JYJ	C-C2-C1	4.34	60.16	58.33
12	G	638	JYJ	C5-C4-N	-2.95	104.12	110.44
12	G	638	JYJ	C6-C7-N	-2.92	104.18	110.44

There are no chirality outliers.

5 of 28 torsion outliers are listed below:

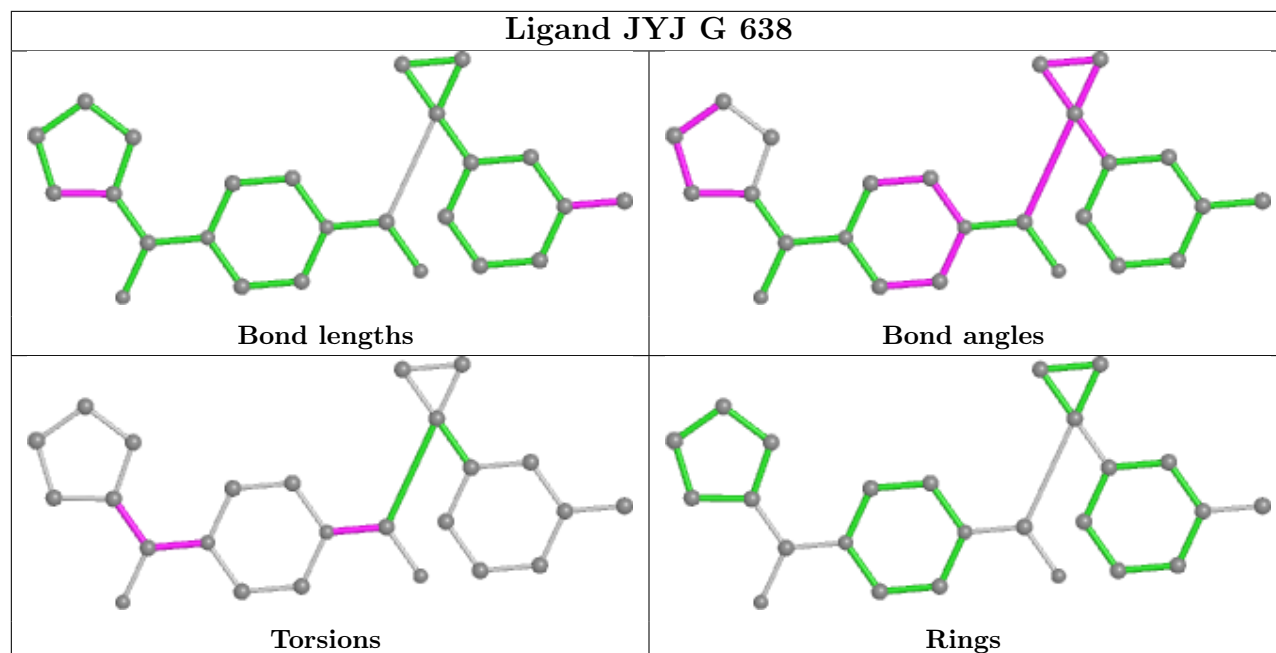
Mol	Chain	Res	Type	Atoms
12	G	638	JYJ	O1-C3-N-C4
12	G	638	JYJ	O1-C3-N-C7
12	G	638	JYJ	O-C8-C9-C10
12	G	638	JYJ	O-C8-C9-C12
12	G	638	JYJ	C9-C8-N1-C5

There are no ring outliers.

2 monomers are involved in 2 short contacts:

Mol	Chain	Res	Type	Clashes	Symm-Clashes
11	G	613	NAG	1	0
11	B	702	NAG	1	0

The following is a two-dimensional graphical depiction of Mogul quality analysis of bond lengths, bond angles, torsion angles, and ring geometry for all instances of the Ligand of Interest. In addition, ligands with molecular weight > 250 and outliers as shown on the validation Tables will also be included. For torsion angles, if less than 5% of the Mogul distribution of torsion angles is within 10 degrees of the torsion angle in question, then that torsion angle is considered an outlier. Any bond that is central to one or more torsion angles identified as an outlier by Mogul will be highlighted in the graph. For rings, the root-mean-square deviation (RMSD) between the ring in question and similar rings identified by Mogul is calculated over all ring torsion angles. If the average RMSD is greater than 60 degrees and the minimal RMSD between the ring in question and any Mogul-identified rings is also greater than 60 degrees, then that ring is considered an outlier. The outliers are highlighted in purple. The color gray indicates Mogul did not find sufficient equivalents in the CSD to analyse the geometry.



5.7 Other polymers [i](#)

There are no such residues in this entry.

5.8 Polymer linkage issues [i](#)

There are no chain breaks in this entry.

6 Fit of model and data [i](#)

6.1 Protein, DNA and RNA chains [i](#)

In the following table, the column labelled ‘#RSRZ> 2’ contains the number (and percentage) of RSRZ outliers, followed by percent RSRZ outliers for the chain as percentile scores relative to all X-ray entries and entries of similar resolution. The OWAB column contains the minimum, median, 95th percentile and maximum values of the occupancy-weighted average B-factor per residue. The column labelled ‘Q< 0.9’ lists the number of (and percentage) of residues with an average occupancy less than 0.9.

Mol	Chain	Analysed	<RSRZ>	#RSRZ>2	OWAB(Å ²)	Q<0.9
1	B	128/153 (83%)	-0.23	3 (2%) 60 63	12, 38, 64, 84	0
2	D	128/134 (95%)	0.58	24 (18%) 1 1	38, 76, 107, 119	0
3	E	105/114 (92%)	0.20	7 (6%) 17 18	40, 64, 97, 109	0
4	G	439/481 (91%)	-0.19	11 (2%) 57 61	13, 34, 83, 134	0
5	H	226/244 (92%)	0.04	8 (3%) 44 47	24, 54, 84, 114	0
6	L	211/217 (97%)	-0.48	2 (0%) 84 86	14, 38, 57, 107	0
All	All	1237/1343 (92%)	-0.09	55 (4%) 34 37	12, 44, 94, 134	0

The worst 5 of 55 RSRZ outliers are listed below:

Mol	Chain	Res	Type	RSRZ
5	H	187	LEU	7.5
4	G	138	ILE	7.2
4	G	141	ASP	6.8
4	G	137	ALA	6.4
4	G	458	GLY	5.9

6.2 Non-standard residues in protein, DNA, RNA chains [i](#)

There are no non-standard protein/DNA/RNA residues in this entry.

6.3 Carbohydrates [i](#)

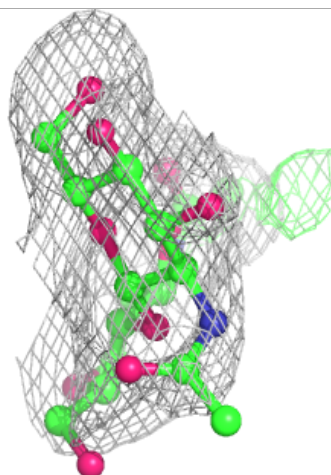
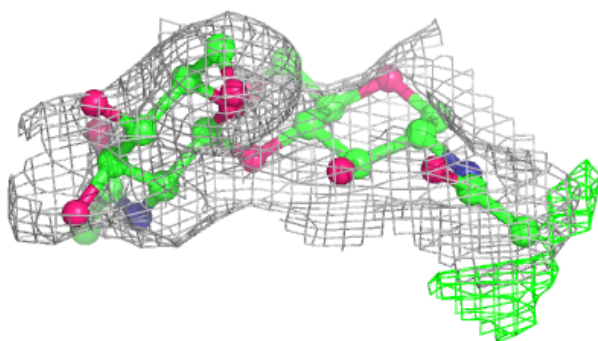
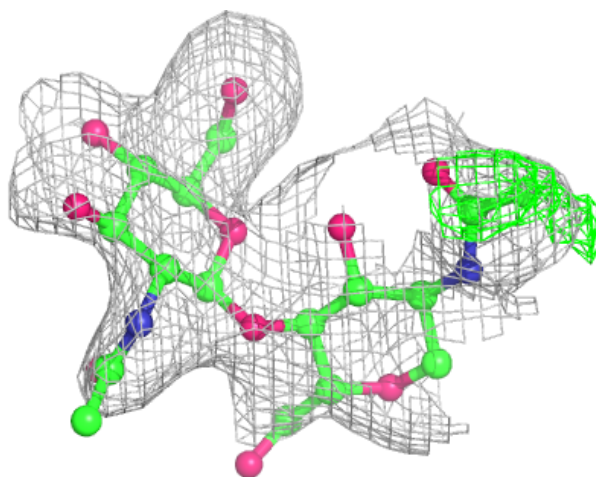
In the following table, the Atoms column lists the number of modelled atoms in the group and the number defined in the chemical component dictionary. The B-factors column lists the minimum, median, 95th percentile and maximum values of B factors of atoms in the group. The column labelled ‘Q< 0.9’ lists the number of atoms with occupancy less than 0.9.

Mol	Type	Chain	Res	Atoms	RSCC	RSR	B-factors(\AA^2)	Q<0.9
9	BMA	F	3	11/12	0.68	0.24	92,113,122,124	0
7	NAG	A	1	14/15	0.75	0.23	77,107,124,125	0
7	NAG	A	2	14/15	0.78	0.37	72,112,123,123	0
7	NAG	J	2	14/15	0.82	0.26	65,96,118,126	0
10	MAN	M	9	11/12	0.83	0.32	72,84,99,107	0
8	MAN	C	4	11/12	0.86	0.18	77,79,90,94	0
9	BMA	I	3	11/12	0.87	0.21	64,83,94,95	0
8	MAN	C	5	11/12	0.90	0.20	84,90,105,105	0
7	NAG	K	2	14/15	0.90	0.24	53,83,100,101	0
9	NAG	F	2	14/15	0.91	0.15	50,88,106,119	0
7	NAG	N	2	14/15	0.92	0.19	90,95,100,103	0
10	NAG	M	1	14/15	0.93	0.14	40,52,62,72	0
10	MAN	M	7	11/12	0.93	0.12	46,58,70,71	0
9	NAG	I	2	14/15	0.93	0.12	25,53,68,84	0
7	NAG	N	1	14/15	0.94	0.11	39,67,87,93	0
10	MAN	M	8	11/12	0.94	0.11	45,56,65,70	0
10	MAN	M	6	11/12	0.94	0.11	30,53,56,57	0
7	NAG	J	1	14/15	0.95	0.12	32,61,73,91	0
8	NAG	C	1	14/15	0.95	0.17	18,33,45,48	0
9	NAG	F	1	14/15	0.95	0.12	24,52,67,73	0
10	MAN	M	10	11/12	0.95	0.09	51,64,76,77	0
10	BMA	M	3	11/12	0.96	0.10	34,41,48,55	0
8	NAG	C	2	14/15	0.96	0.12	35,44,57,61	0
10	NAG	M	2	14/15	0.96	0.09	10,52,62,64	0
8	MAN	C	6	11/12	0.97	0.09	23,41,53,60	0
10	MAN	M	4	11/12	0.97	0.10	24,31,46,54	0
10	MAN	M	5	11/12	0.97	0.14	21,34,44,47	0
8	BMA	C	3	11/12	0.97	0.10	40,50,60,77	0
7	NAG	K	1	14/15	0.98	0.11	26,33,49,58	0
9	NAG	I	1	14/15	0.98	0.11	18,28,37,45	0

The following is a graphical depiction of the model fit to experimental electron density for oligosaccharide. Each fit is shown from different orientation to approximate a three-dimensional view.

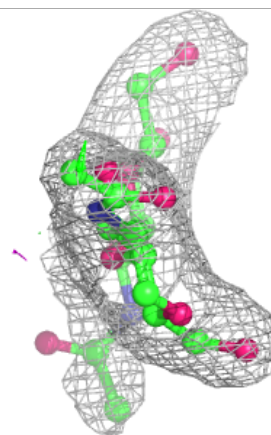
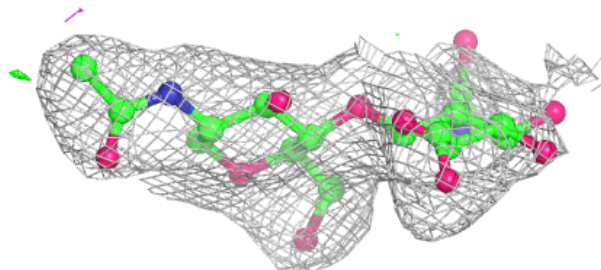
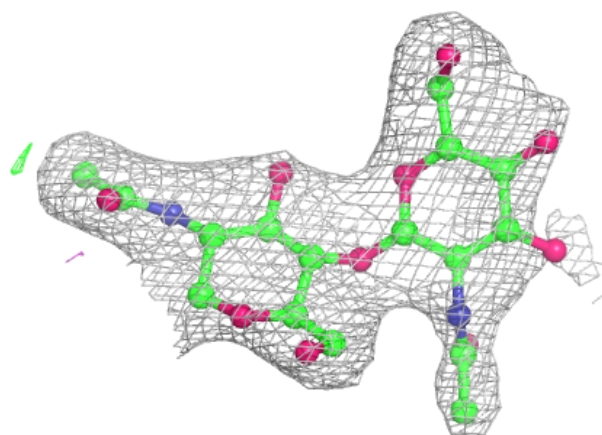
Electron density around Chain A:

$2mF_o-DF_c$ (at 0.7 rmsd) in gray
 mF_o-DF_c (at 3 rmsd) in purple (negative)
and green (positive)



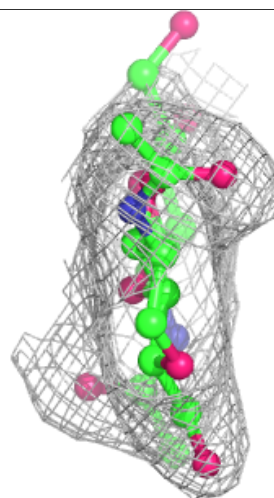
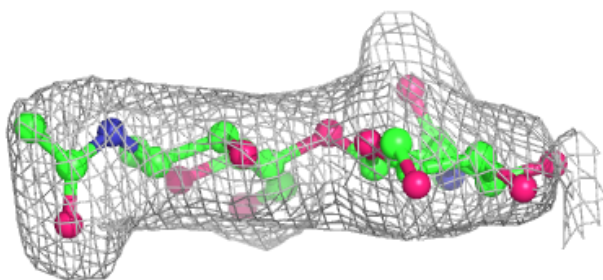
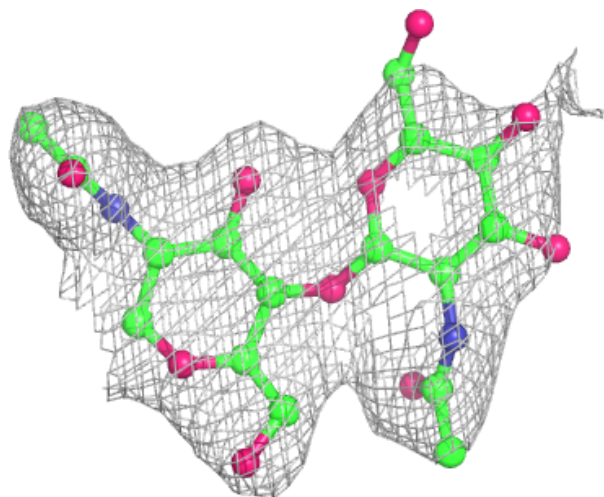
Electron density around Chain J:

$2mF_o-DF_c$ (at 0.7 rmsd) in gray
 mF_o-DF_c (at 3 rmsd) in purple (negative)
and green (positive)



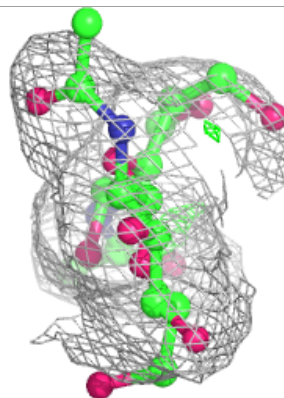
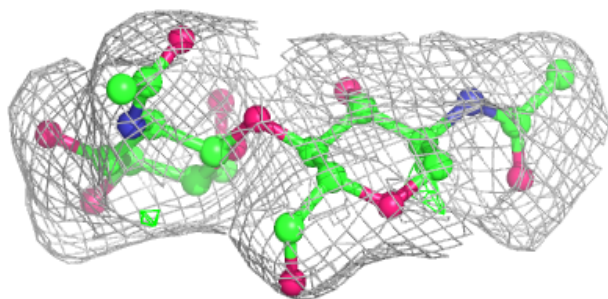
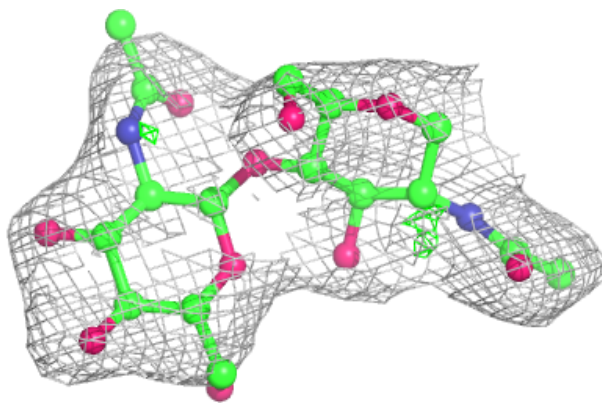
Electron density around Chain K:

$2mF_o-DF_c$ (at 0.7 rmsd) in gray
 mF_o-DF_c (at 3 rmsd) in purple (negative)
and green (positive)



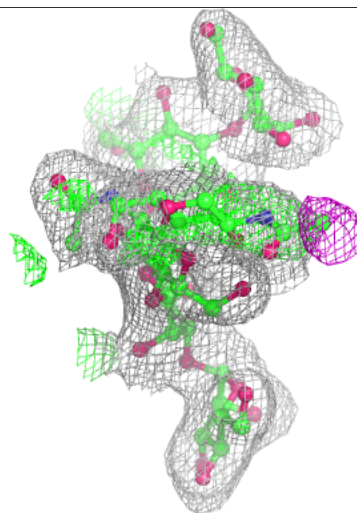
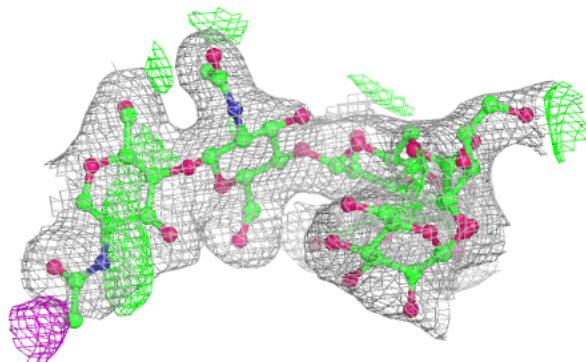
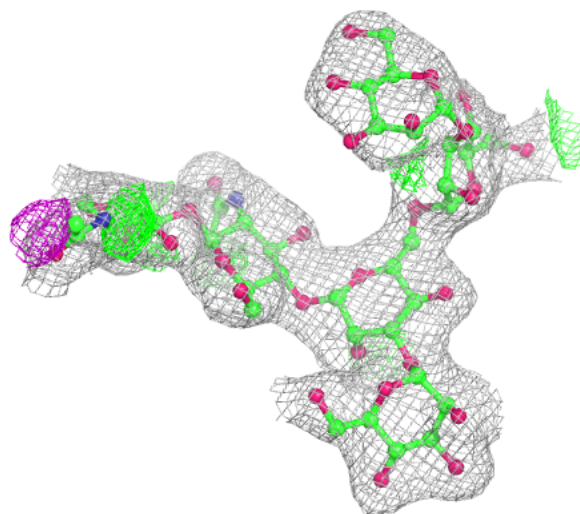
Electron density around Chain N:

$2mF_o-DF_c$ (at 0.7 rmsd) in gray
 mF_o-DF_c (at 3 rmsd) in purple (negative)
and green (positive)



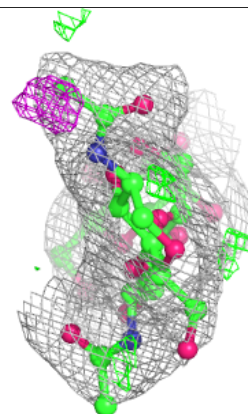
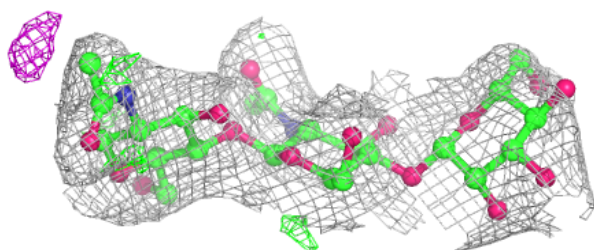
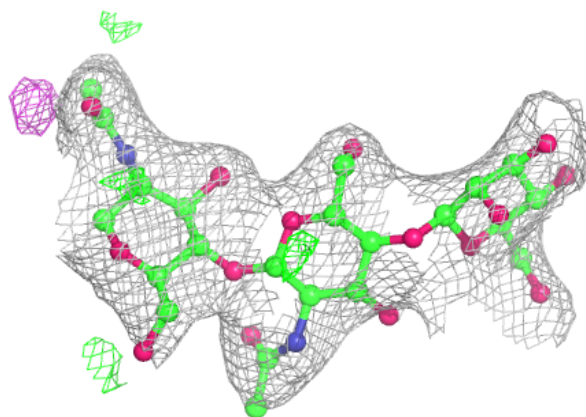
Electron density around Chain C:

$2mF_o-DF_c$ (at 0.7 rmsd) in gray
 mF_o-DF_c (at 3 rmsd) in purple (negative)
and green (positive)

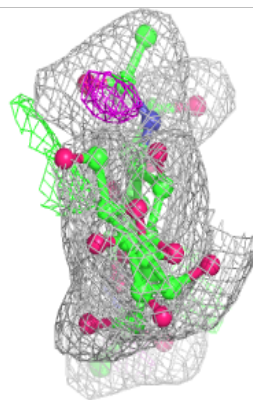
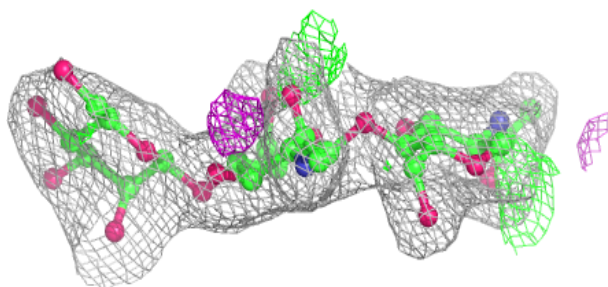
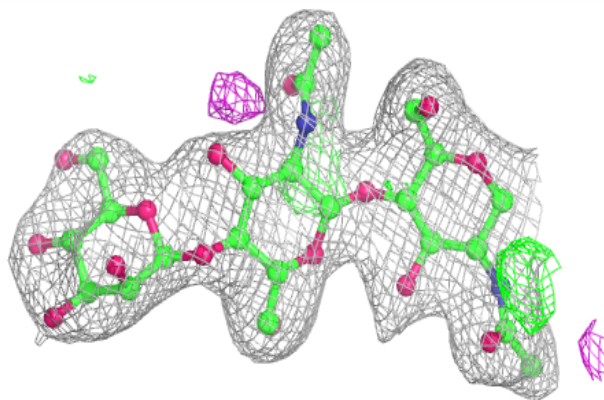


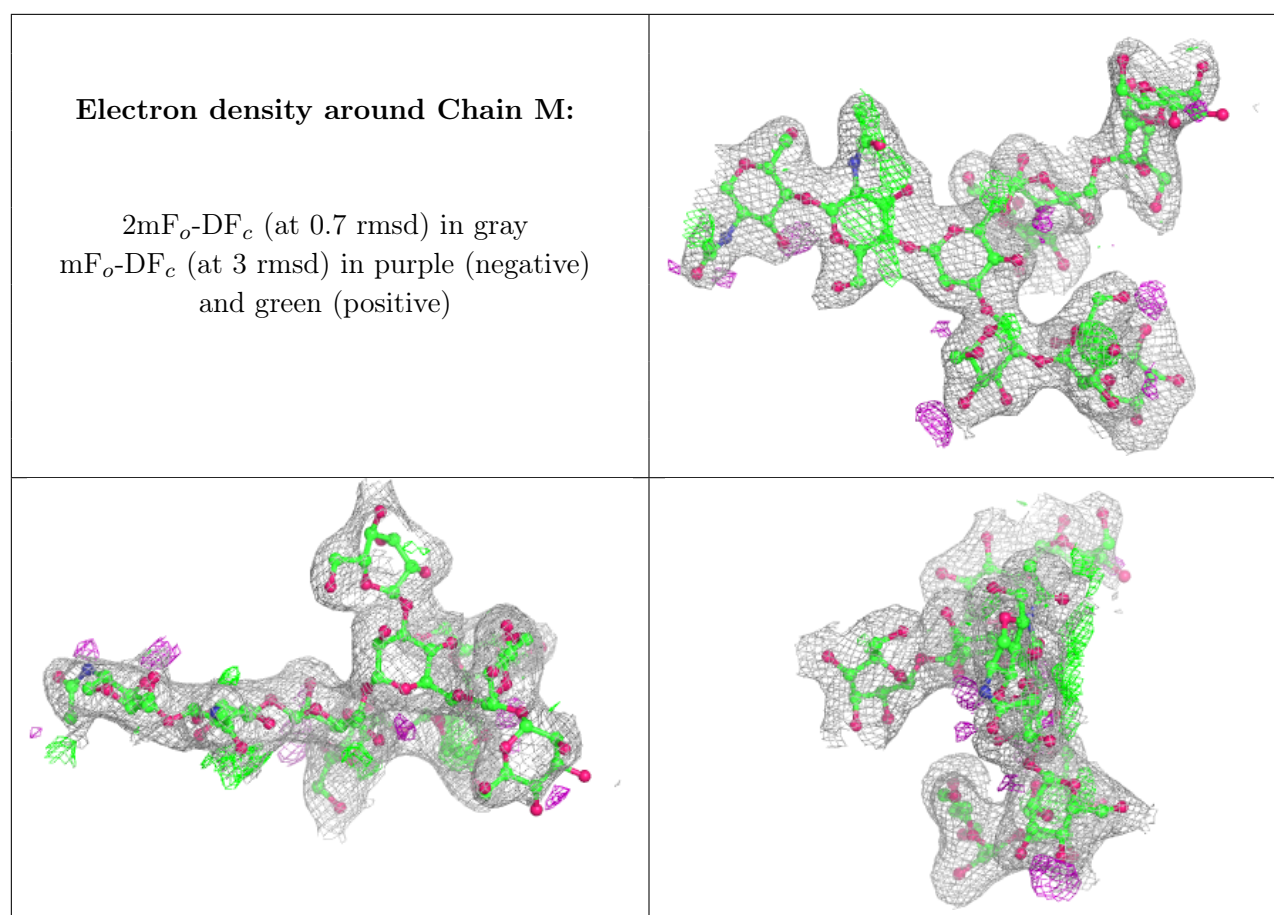
Electron density around Chain F:

$2mF_o-DF_c$ (at 0.7 rmsd) in gray
 mF_o-DF_c (at 3 rmsd) in purple (negative)
and green (positive)

**Electron density around Chain I:**

$2mF_o-DF_c$ (at 0.7 rmsd) in gray
 mF_o-DF_c (at 3 rmsd) in purple (negative)
and green (positive)



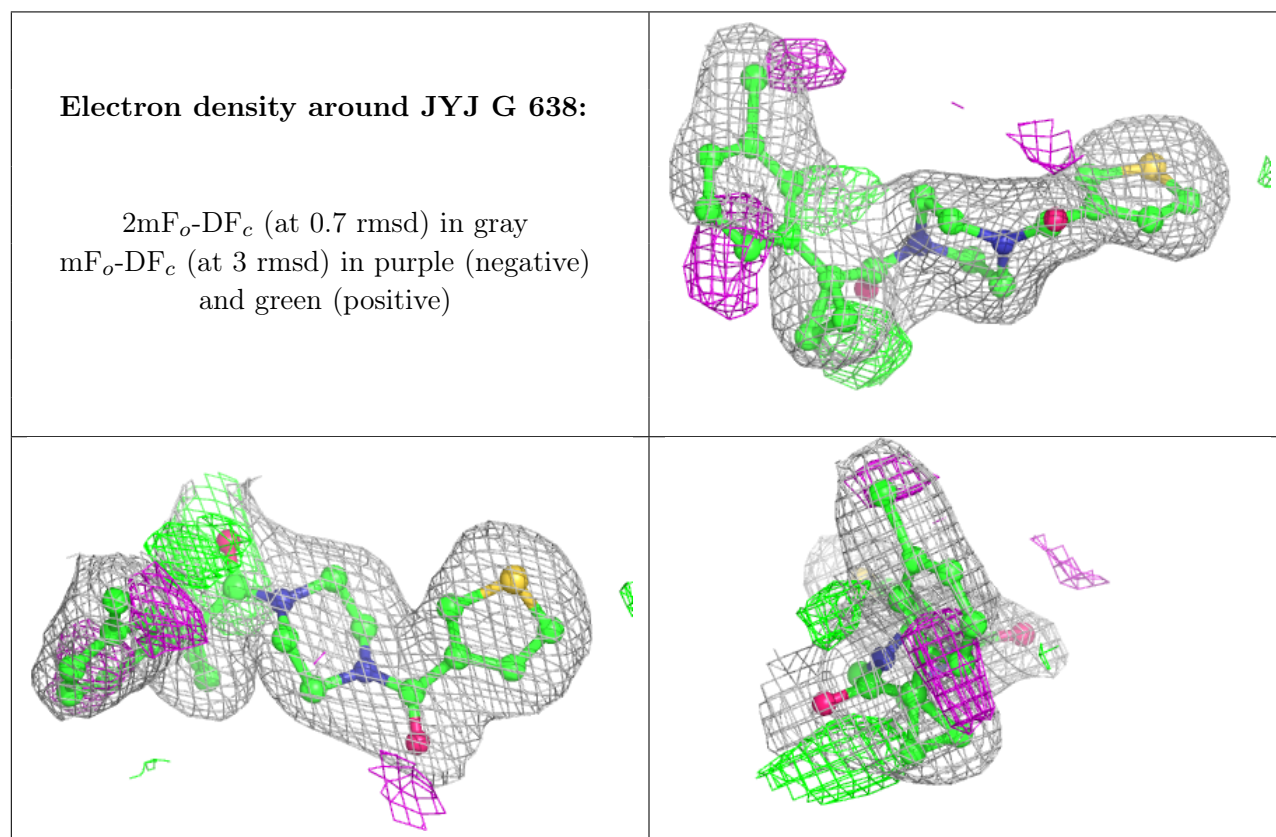


6.4 Ligands [i](#)

In the following table, the Atoms column lists the number of modelled atoms in the group and the number defined in the chemical component dictionary. The B-factors column lists the minimum, median, 95th percentile and maximum values of B factors of atoms in the group. The column labelled 'Q<0.9' lists the number of atoms with occupancy less than 0.9.

Mol	Type	Chain	Res	Atoms	RSCC	RSR	B-factors(Å ²)	Q<0.9
11	NAG	G	607	14/15	0.77	0.20	76,96,117,126	0
11	NAG	B	701	14/15	0.86	0.39	59,108,116,128	0
11	NAG	B	702	14/15	0.87	0.41	69,84,107,110	0
11	NAG	G	632	14/15	0.89	0.21	74,90,100,102	0
11	NAG	G	635	14/15	0.90	0.26	41,94,100,106	0
11	NAG	G	612	14/15	0.91	0.13	35,53,74,76	0
11	NAG	G	617	14/15	0.92	0.25	53,72,96,98	0
11	NAG	G	611	14/15	0.92	0.17	33,54,73,98	0
11	NAG	G	613	14/15	0.92	0.13	62,78,91,94	0
12	JYJ	G	638	25/25	0.93	0.15	15,44,61,64	0
11	NAG	G	633	14/15	0.94	0.14	49,68,75,79	0
11	NAG	G	634	14/15	0.95	0.12	36,51,59,82	0

The following is a graphical depiction of the model fit to experimental electron density of all instances of the Ligand of Interest. In addition, ligands with molecular weight > 250 and outliers as shown on the geometry validation Tables will also be included. Each fit is shown from different orientation to approximate a three-dimensional view.



6.5 Other polymers [i](#)

There are no such residues in this entry.