



Full wwPDB EM Validation Report ⓘ

May 21, 2024 – 10:12 AM JST

PDB ID : 8J1B
EMDB ID : EMD-35918
Title : GSK101 and Ruthenium Red bound state of mTRPV4
Authors : Zhen, W.X.; Yang, F.
Deposited on : 2023-04-12
Resolution : 3.72 Å(reported)

This is a Full wwPDB EM Validation Report for a publicly released PDB entry.

We welcome your comments at validation@mail.wwpdb.org

A user guide is available at

<https://www.wwpdb.org/validation/2017/EMValidationReportHelp>

with specific help available everywhere you see the ⓘ symbol.

The types of validation reports are described at

<http://www.wwpdb.org/validation/2017/FAQs#types>.

The following versions of software and data (see [references ⓘ](#)) were used in the production of this report:

EMDB validation analysis	: FAILED
Mogul	: 1.8.5 (274361), CSD as541be (2020)
MolProbity	: 4.02b-467
buster-report	: 1.1.7 (2018)
Percentile statistics	: 20191225.v01 (using entries in the PDB archive December 25th 2019)
MapQ	: FAILED
Ideal geometry (proteins)	: Engh & Huber (2001)
Ideal geometry (DNA, RNA)	: Parkinson et al. (1996)
Validation Pipeline (wwPDB-VP)	: 2.36.2

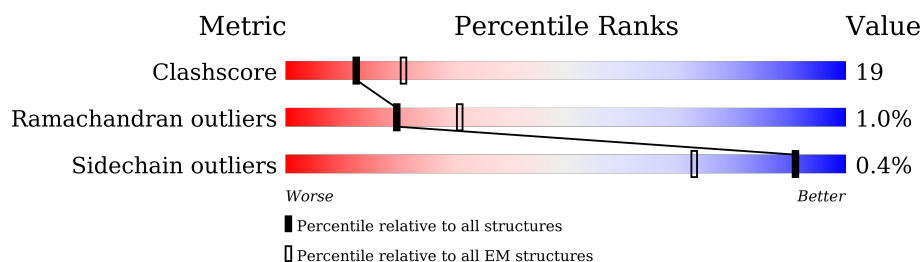
1 Overall quality at a glance

The following experimental techniques were used to determine the structure:

ELECTRON MICROSCOPY

The reported resolution of this entry is 3.72 Å.

Percentile scores (ranging between 0-100) for global validation metrics of the entry are shown in the following graphic. The table shows the number of entries on which the scores are based.



Metric	Whole archive (#Entries)	EM structures (#Entries)
Clashscore	158937	4297
Ramachandran outliers	154571	4023
Sidechain outliers	154315	3826

The table below summarises the geometric issues observed across the polymeric chains and their fit to the map. The red, orange, yellow and green segments of the bar indicate the fraction of residues that contain outliers for ≥ 3 , 2, 1 and 0 types of geometric quality criteria respectively. A grey segment represents the fraction of residues that are not modelled. The numeric value for each fraction is indicated below the corresponding segment, with a dot representing fractions $\leq 5\%$.

Mol	Chain	Length	Quality of chain
1	A	700	
1	B	700	
1	C	700	
1	D	700	

2 Entry composition [i](#)

There are 3 unique types of molecules in this entry. The entry contains 19427 atoms, of which 0 are hydrogens and 0 are deuteriums.

In the tables below, the AltConf column contains the number of residues with at least one atom in alternate conformation and the Trace column contains the number of residues modelled with at most 2 atoms.

- Molecule 1 is a protein called Transient receptor potential cation channel subfamily V member 4.

Mol	Chain	Residues	Atoms					AltConf	Trace
1	A	597	Total	C	N	O	S	0	0
			4810	3128	798	859	25		
1	B	597	Total	C	N	O	S	0	0
			4810	3128	798	859	25		
1	C	597	Total	C	N	O	S	0	0
			4810	3128	798	859	25		
1	D	597	Total	C	N	O	S	0	0
			4810	3128	798	859	25		

There are 140 discrepancies between the modelled and reference sequences:

Chain	Residue	Modelled	Actual	Comment	Reference
A	102	ASP	-	expression tag	UNP Q9EPK8
A	103	TYR	-	expression tag	UNP Q9EPK8
A	104	LYS	-	expression tag	UNP Q9EPK8
A	105	ASP	-	expression tag	UNP Q9EPK8
A	106	ASP	-	expression tag	UNP Q9EPK8
A	107	ASP	-	expression tag	UNP Q9EPK8
A	108	ASP	-	expression tag	UNP Q9EPK8
A	109	LYS	-	expression tag	UNP Q9EPK8
A	110	TRP	-	expression tag	UNP Q9EPK8
A	111	SER	-	expression tag	UNP Q9EPK8
A	112	HIS	-	expression tag	UNP Q9EPK8
A	113	PRO	-	expression tag	UNP Q9EPK8
A	114	GLN	-	expression tag	UNP Q9EPK8
A	115	PHE	-	expression tag	UNP Q9EPK8
A	116	GLU	-	expression tag	UNP Q9EPK8
A	117	LYS	-	expression tag	UNP Q9EPK8
A	118	GLY	-	expression tag	UNP Q9EPK8
A	119	GLY	-	expression tag	UNP Q9EPK8
A	120	GLY	-	expression tag	UNP Q9EPK8
A	121	GLY	-	expression tag	UNP Q9EPK8
A	122	SER	-	expression tag	UNP Q9EPK8

Continued on next page...

Continued from previous page...

Chain	Residue	Modelled	Actual	Comment	Reference
A	123	GLY	-	expression tag	UNP Q9EPK8
A	124	GLY	-	expression tag	UNP Q9EPK8
A	125	SER	-	expression tag	UNP Q9EPK8
A	126	ALA	-	expression tag	UNP Q9EPK8
A	127	TRP	-	expression tag	UNP Q9EPK8
A	128	SER	-	expression tag	UNP Q9EPK8
A	129	HIS	-	expression tag	UNP Q9EPK8
A	130	PRO	-	expression tag	UNP Q9EPK8
A	131	GLN	-	expression tag	UNP Q9EPK8
A	132	PHE	-	expression tag	UNP Q9EPK8
A	133	GLU	-	expression tag	UNP Q9EPK8
A	134	LYS	-	expression tag	UNP Q9EPK8
A	135	GLU	-	expression tag	UNP Q9EPK8
A	136	PHE	-	expression tag	UNP Q9EPK8
B	102	ASP	-	expression tag	UNP Q9EPK8
B	103	TYR	-	expression tag	UNP Q9EPK8
B	104	LYS	-	expression tag	UNP Q9EPK8
B	105	ASP	-	expression tag	UNP Q9EPK8
B	106	ASP	-	expression tag	UNP Q9EPK8
B	107	ASP	-	expression tag	UNP Q9EPK8
B	108	ASP	-	expression tag	UNP Q9EPK8
B	109	LYS	-	expression tag	UNP Q9EPK8
B	110	TRP	-	expression tag	UNP Q9EPK8
B	111	SER	-	expression tag	UNP Q9EPK8
B	112	HIS	-	expression tag	UNP Q9EPK8
B	113	PRO	-	expression tag	UNP Q9EPK8
B	114	GLN	-	expression tag	UNP Q9EPK8
B	115	PHE	-	expression tag	UNP Q9EPK8
B	116	GLU	-	expression tag	UNP Q9EPK8
B	117	LYS	-	expression tag	UNP Q9EPK8
B	118	GLY	-	expression tag	UNP Q9EPK8
B	119	GLY	-	expression tag	UNP Q9EPK8
B	120	GLY	-	expression tag	UNP Q9EPK8
B	121	GLY	-	expression tag	UNP Q9EPK8
B	122	SER	-	expression tag	UNP Q9EPK8
B	123	GLY	-	expression tag	UNP Q9EPK8
B	124	GLY	-	expression tag	UNP Q9EPK8
B	125	SER	-	expression tag	UNP Q9EPK8
B	126	ALA	-	expression tag	UNP Q9EPK8
B	127	TRP	-	expression tag	UNP Q9EPK8
B	128	SER	-	expression tag	UNP Q9EPK8
B	129	HIS	-	expression tag	UNP Q9EPK8

Continued on next page...

Continued from previous page...

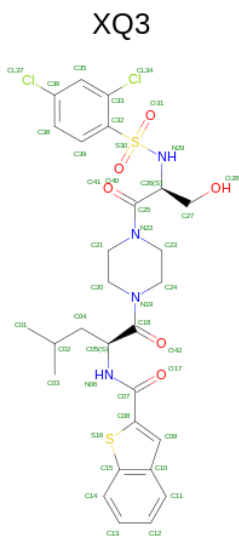
Chain	Residue	Modelled	Actual	Comment	Reference
B	130	PRO	-	expression tag	UNP Q9EPK8
B	131	GLN	-	expression tag	UNP Q9EPK8
B	132	PHE	-	expression tag	UNP Q9EPK8
B	133	GLU	-	expression tag	UNP Q9EPK8
B	134	LYS	-	expression tag	UNP Q9EPK8
B	135	GLU	-	expression tag	UNP Q9EPK8
B	136	PHE	-	expression tag	UNP Q9EPK8
C	102	ASP	-	expression tag	UNP Q9EPK8
C	103	TYR	-	expression tag	UNP Q9EPK8
C	104	LYS	-	expression tag	UNP Q9EPK8
C	105	ASP	-	expression tag	UNP Q9EPK8
C	106	ASP	-	expression tag	UNP Q9EPK8
C	107	ASP	-	expression tag	UNP Q9EPK8
C	108	ASP	-	expression tag	UNP Q9EPK8
C	109	LYS	-	expression tag	UNP Q9EPK8
C	110	TRP	-	expression tag	UNP Q9EPK8
C	111	SER	-	expression tag	UNP Q9EPK8
C	112	HIS	-	expression tag	UNP Q9EPK8
C	113	PRO	-	expression tag	UNP Q9EPK8
C	114	GLN	-	expression tag	UNP Q9EPK8
C	115	PHE	-	expression tag	UNP Q9EPK8
C	116	GLU	-	expression tag	UNP Q9EPK8
C	117	LYS	-	expression tag	UNP Q9EPK8
C	118	GLY	-	expression tag	UNP Q9EPK8
C	119	GLY	-	expression tag	UNP Q9EPK8
C	120	GLY	-	expression tag	UNP Q9EPK8
C	121	GLY	-	expression tag	UNP Q9EPK8
C	122	SER	-	expression tag	UNP Q9EPK8
C	123	GLY	-	expression tag	UNP Q9EPK8
C	124	GLY	-	expression tag	UNP Q9EPK8
C	125	SER	-	expression tag	UNP Q9EPK8
C	126	ALA	-	expression tag	UNP Q9EPK8
C	127	TRP	-	expression tag	UNP Q9EPK8
C	128	SER	-	expression tag	UNP Q9EPK8
C	129	HIS	-	expression tag	UNP Q9EPK8
C	130	PRO	-	expression tag	UNP Q9EPK8
C	131	GLN	-	expression tag	UNP Q9EPK8
C	132	PHE	-	expression tag	UNP Q9EPK8
C	133	GLU	-	expression tag	UNP Q9EPK8
C	134	LYS	-	expression tag	UNP Q9EPK8
C	135	GLU	-	expression tag	UNP Q9EPK8
C	136	PHE	-	expression tag	UNP Q9EPK8

Continued on next page...

Continued from previous page...

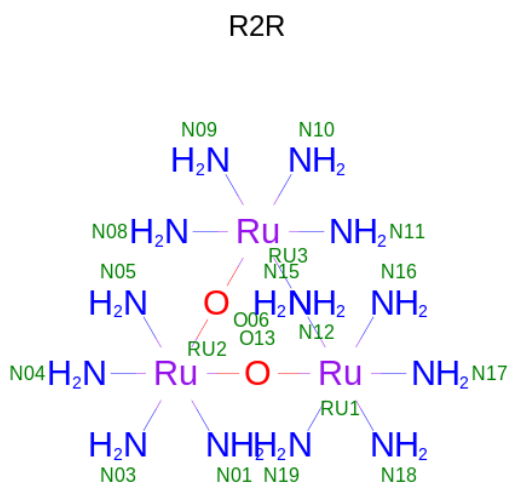
Chain	Residue	Modelled	Actual	Comment	Reference
D	102	ASP	-	expression tag	UNP Q9EPK8
D	103	TYR	-	expression tag	UNP Q9EPK8
D	104	LYS	-	expression tag	UNP Q9EPK8
D	105	ASP	-	expression tag	UNP Q9EPK8
D	106	ASP	-	expression tag	UNP Q9EPK8
D	107	ASP	-	expression tag	UNP Q9EPK8
D	108	ASP	-	expression tag	UNP Q9EPK8
D	109	LYS	-	expression tag	UNP Q9EPK8
D	110	TRP	-	expression tag	UNP Q9EPK8
D	111	SER	-	expression tag	UNP Q9EPK8
D	112	HIS	-	expression tag	UNP Q9EPK8
D	113	PRO	-	expression tag	UNP Q9EPK8
D	114	GLN	-	expression tag	UNP Q9EPK8
D	115	PHE	-	expression tag	UNP Q9EPK8
D	116	GLU	-	expression tag	UNP Q9EPK8
D	117	LYS	-	expression tag	UNP Q9EPK8
D	118	GLY	-	expression tag	UNP Q9EPK8
D	119	GLY	-	expression tag	UNP Q9EPK8
D	120	GLY	-	expression tag	UNP Q9EPK8
D	121	GLY	-	expression tag	UNP Q9EPK8
D	122	SER	-	expression tag	UNP Q9EPK8
D	123	GLY	-	expression tag	UNP Q9EPK8
D	124	GLY	-	expression tag	UNP Q9EPK8
D	125	SER	-	expression tag	UNP Q9EPK8
D	126	ALA	-	expression tag	UNP Q9EPK8
D	127	TRP	-	expression tag	UNP Q9EPK8
D	128	SER	-	expression tag	UNP Q9EPK8
D	129	HIS	-	expression tag	UNP Q9EPK8
D	130	PRO	-	expression tag	UNP Q9EPK8
D	131	GLN	-	expression tag	UNP Q9EPK8
D	132	PHE	-	expression tag	UNP Q9EPK8
D	133	GLU	-	expression tag	UNP Q9EPK8
D	134	LYS	-	expression tag	UNP Q9EPK8
D	135	GLU	-	expression tag	UNP Q9EPK8
D	136	PHE	-	expression tag	UNP Q9EPK8

- Molecule 2 is N-[(2S)-1-{4-[N-(2,4-dichlorobenzene-1-sulfonyl)-L-seryl]piperazin-1-yl}-4-methyl-1-oxopentan-2-yl]-1-benzothiophene-2-carboxamide (three-letter code: XQ3) (formula: C₂₈H₃₂Cl₂N₄O₆S₂) (labeled as "Ligand of Interest" by depositor).



Mol	Chain	Residues	Atoms						AltConf
2	A	1	Total 42	C 28	Cl 2	N 4	O 6	S 2	0
2	B	1	Total 42	C 28	Cl 2	N 4	O 6	S 2	0
2	C	1	Total 42	C 28	Cl 2	N 4	O 6	S 2	0
2	D	1	Total 42	C 28	Cl 2	N 4	O 6	S 2	0

- Molecule 3 is ruthenium(6+) azanide pentaamino(oxido)ruthenium (1/4/2) (three-letter code: R2R) (formula: $\text{H}_{28}\text{N}_{14}\text{O}_2\text{Ru}_3$) (labeled as "Ligand of Interest" by depositor).

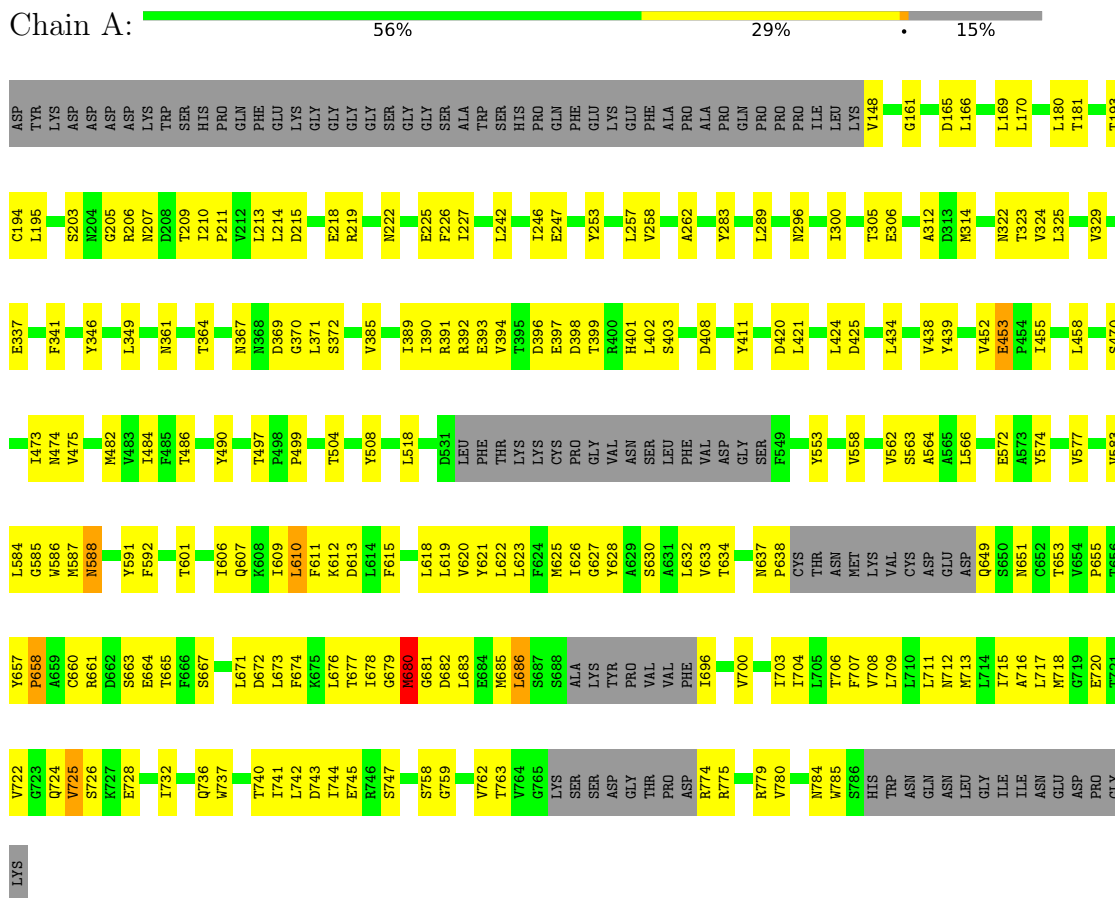


Mol	Chain	Residues	Atoms				AltConf
3	A	1	Total	N	O	Ru	0
			19	14	2	3	

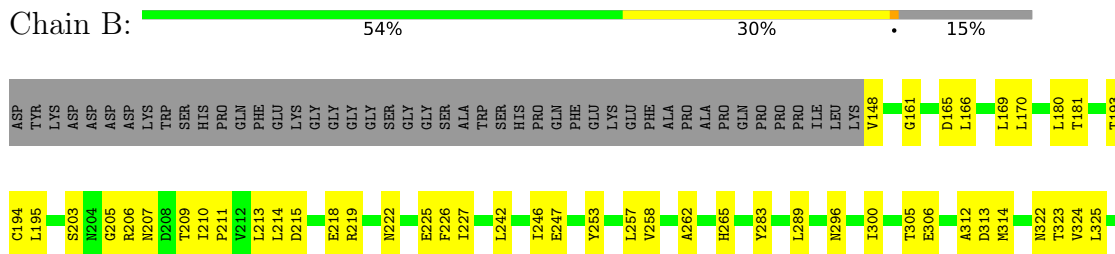
3 Residue-property plots

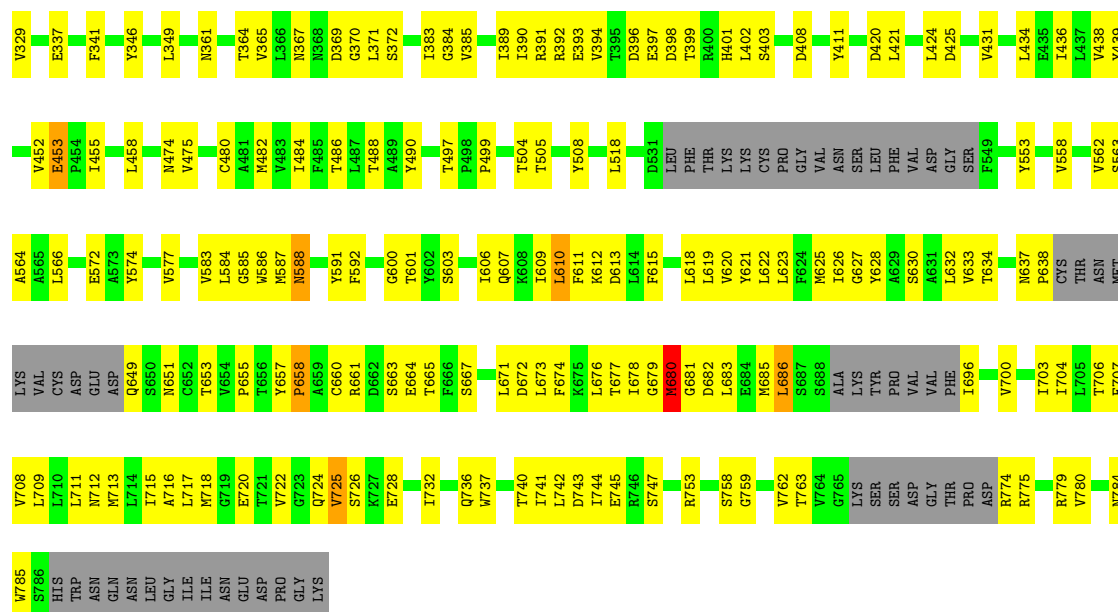
These plots are drawn for all protein, RNA, DNA and oligosaccharide chains in the entry. The first graphic for a chain summarises the proportions of the various outlier classes displayed in the second graphic. The second graphic shows the sequence view annotated by issues in geometry. Residues are color-coded according to the number of geometric quality criteria for which they contain at least one outlier: green = 0, yellow = 1, orange = 2 and red = 3 or more. Stretches of 2 or more consecutive residues without any outlier are shown as a green connector. Residues present in the sample, but not in the model, are shown in grey.

- Molecule 1: Transient receptor potential cation channel subfamily V member 4



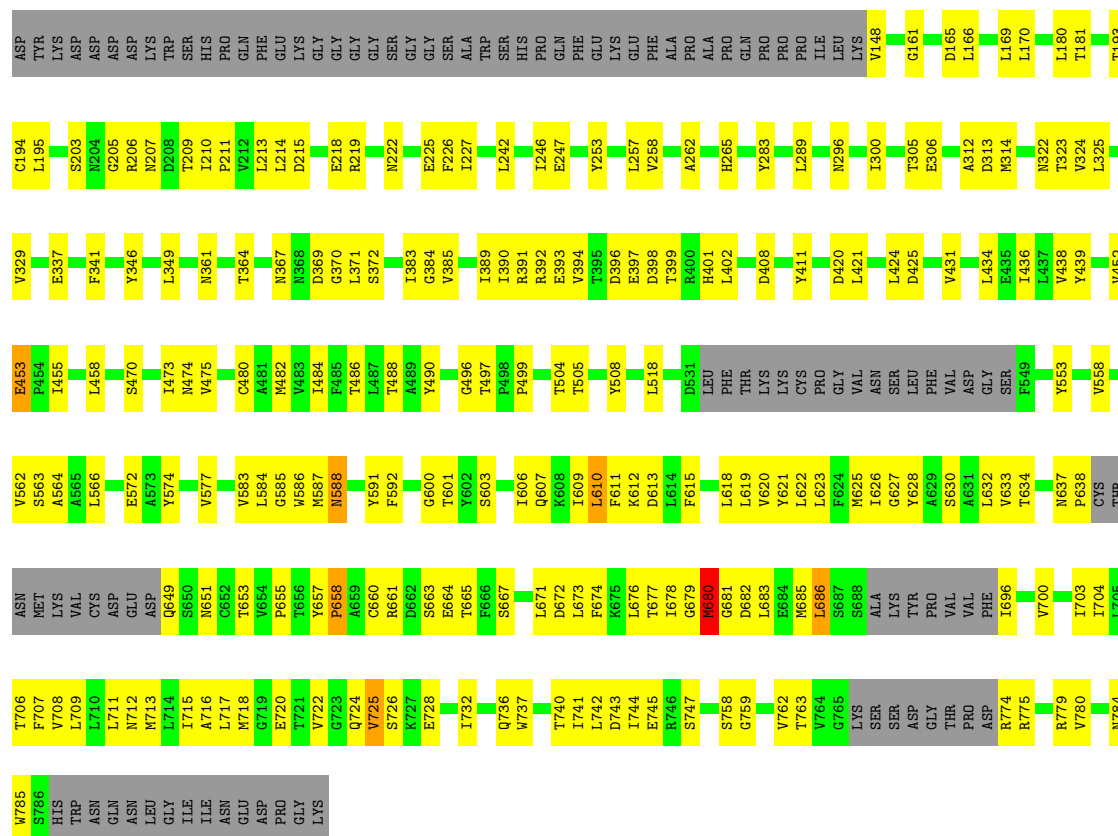
- Molecule 1: Transient receptor potential cation channel subfamily V member 4





- Molecule 1: Transient receptor potential cation channel subfamily V member 4

Chain C: 54% 30% 15%



- Molecule 1: Transient receptor potential cation channel subfamily V member 4

Chain D: 55% 29% 15%



4 Experimental information

Property	Value	Source
EM reconstruction method	SINGLE PARTICLE	Depositor
Imposed symmetry	POINT, Not provided	
Number of particles used	334401	Depositor
Resolution determination method	FSC 0.143 CUT-OFF	Depositor
CTF correction method	PHASE FLIPPING AND AMPLITUDE CORRECTION	Depositor
Microscope	FEI TITAN KRIOS	Depositor
Voltage (kV)	300	Depositor
Electron dose ($e^-/\text{\AA}^2$)	52	Depositor
Minimum defocus (nm)	800	Depositor
Maximum defocus (nm)	1600	Depositor
Magnification	Not provided	
Image detector	FEI FALCON IV (4k x 4k)	Depositor

5 Model quality [i](#)

5.1 Standard geometry [i](#)

Bond lengths and bond angles in the following residue types are not validated in this section: XQ3, R2R

The Z score for a bond length (or angle) is the number of standard deviations the observed value is removed from the expected value. A bond length (or angle) with $|Z| > 5$ is considered an outlier worth inspection. RMSZ is the root-mean-square of all Z scores of the bond lengths (or angles).

Mol	Chain	Bond lengths		Bond angles	
		RMSZ	$\# Z > 5$	RMSZ	$\# Z > 5$
1	A	0.27	0/4916	0.51	0/6662
1	B	0.27	0/4916	0.51	0/6662
1	C	0.27	0/4916	0.51	0/6662
1	D	0.27	0/4916	0.51	0/6662
All	All	0.27	0/19664	0.51	0/26648

There are no bond length outliers.

There are no bond angle outliers.

There are no chirality outliers.

There are no planarity outliers.

5.2 Too-close contacts [i](#)

In the following table, the Non-H and H(model) columns list the number of non-hydrogen atoms and hydrogen atoms in the chain respectively. The H(added) column lists the number of hydrogen atoms added and optimized by MolProbity. The Clashes column lists the number of clashes within the asymmetric unit, whereas Symm-Clashes lists symmetry-related clashes.

Mol	Chain	Non-H	H(model)	H(added)	Clashes	Symm-Clashes
1	A	4810	0	4880	192	0
1	B	4810	0	4880	200	0
1	C	4810	0	4880	197	0
1	D	4810	0	4880	193	0
2	A	42	0	0	4	0
2	B	42	0	0	4	0
2	C	42	0	0	4	0
2	D	42	0	0	4	0
3	A	19	0	0	8	0
All	All	19427	0	19520	731	0

The all-atom clashscore is defined as the number of clashes found per 1000 atoms (including hydrogen atoms). The all-atom clashscore for this structure is 19.

All (731) close contacts within the same asymmetric unit are listed below, sorted by their clash magnitude.

Atom-1	Atom-2	Interatomic distance (Å)	Clash overlap (Å)
1:C:744:ILE:O	1:C:747:SER:OG	1.89	0.90
1:A:744:ILE:O	1:A:747:SER:OG	1.89	0.90
1:D:744:ILE:O	1:D:747:SER:OG	1.89	0.89
1:B:744:ILE:O	1:B:747:SER:OG	1.89	0.89
1:D:283:TYR:OH	1:D:322:ASN:OD1	1.92	0.88
1:C:283:TYR:OH	1:C:322:ASN:OD1	1.92	0.87
1:B:283:TYR:OH	1:B:322:ASN:OD1	1.92	0.86
1:A:283:TYR:OH	1:A:322:ASN:OD1	1.92	0.86
1:B:438:VAL:HG11	1:B:742:LEU:HD13	1.59	0.85
1:A:322:ASN:O	1:A:323:THR:OG1	1.95	0.84
1:A:438:VAL:HG11	1:A:742:LEU:HD13	1.59	0.84
1:C:322:ASN:O	1:C:323:THR:OG1	1.95	0.83
1:C:438:VAL:HG11	1:C:742:LEU:HD13	1.59	0.83
1:B:322:ASN:O	1:B:323:THR:OG1	1.95	0.83
1:D:322:ASN:O	1:D:323:THR:OG1	1.95	0.83
1:D:438:VAL:HG11	1:D:742:LEU:HD13	1.59	0.82
3:A:902:R2R:N03	1:D:682:ASP:N	2.30	0.79
1:D:737:TRP:NE1	1:D:741:ILE:HD11	1.98	0.79
1:A:737:TRP:NE1	1:A:741:ILE:HD11	1.98	0.79
3:A:902:R2R:N04	1:C:682:ASP:N	2.31	0.79
1:C:421:LEU:HD12	1:C:421:LEU:O	1.83	0.79
1:B:737:TRP:NE1	1:B:741:ILE:HD11	1.98	0.79
1:C:737:TRP:NE1	1:C:741:ILE:HD11	1.98	0.79
1:D:421:LEU:O	1:D:421:LEU:HD12	1.83	0.79
1:B:625:MET:SD	1:B:667:SER:OG	2.42	0.78
1:C:625:MET:SD	1:C:667:SER:OG	2.42	0.78
1:A:421:LEU:HD12	1:A:421:LEU:O	1.83	0.78
3:A:902:R2R:N01	1:B:682:ASP:N	2.31	0.78
1:B:421:LEU:HD12	1:B:421:LEU:O	1.83	0.78
1:C:393:GLU:OE1	1:C:393:GLU:N	2.18	0.77
1:D:625:MET:SD	1:D:667:SER:OG	2.42	0.77
1:A:682:ASP:N	3:A:902:R2R:N05	2.32	0.77
1:A:625:MET:SD	1:A:667:SER:OG	2.42	0.77
1:B:393:GLU:N	1:B:393:GLU:OE1	2.18	0.77
1:A:393:GLU:N	1:A:393:GLU:OE1	2.18	0.76
1:D:393:GLU:N	1:D:393:GLU:OE1	2.18	0.75
1:A:289:LEU:HD22	1:A:324:VAL:HG21	1.69	0.75

Continued on next page...

Continued from previous page...

Atom-1	Atom-2	Interatomic distance (Å)	Clash overlap (Å)
1:D:289:LEU:HD22	1:D:324:VAL:HG21	1.69	0.74
1:B:658:PRO:O	1:B:663:SER:OG	2.04	0.74
1:B:679:GLY:O	1:B:680:MET:HB2	1.86	0.74
1:C:658:PRO:O	1:C:663:SER:OG	2.04	0.74
1:A:658:PRO:O	1:A:663:SER:OG	2.04	0.74
1:B:289:LEU:HD22	1:B:324:VAL:HG21	1.69	0.74
1:D:658:PRO:O	1:D:663:SER:OG	2.04	0.74
1:D:679:GLY:O	1:D:680:MET:HB2	1.86	0.74
1:C:289:LEU:HD22	1:C:324:VAL:HG21	1.69	0.74
1:C:679:GLY:O	1:C:680:MET:HB2	1.86	0.74
1:A:720:GLU:O	1:A:724:GLN:NE2	2.22	0.73
1:C:720:GLU:O	1:C:724:GLN:NE2	2.22	0.73
1:D:720:GLU:O	1:D:724:GLN:NE2	2.22	0.73
1:A:679:GLY:O	1:A:680:MET:HB2	1.89	0.73
1:A:681:GLY:HA2	1:A:683:LEU:HD23	1.70	0.73
1:B:720:GLU:O	1:B:724:GLN:NE2	2.22	0.73
1:A:677:THR:OG1	1:A:683:LEU:HD22	1.89	0.72
1:B:677:THR:OG1	1:B:683:LEU:HD22	1.89	0.72
1:D:681:GLY:HA2	1:D:683:LEU:HD23	1.70	0.72
1:C:681:GLY:HA2	1:C:683:LEU:HD23	1.70	0.72
1:B:600:GLY:O	1:B:603:SER:OG	2.07	0.72
1:D:677:THR:OG1	1:D:683:LEU:HD22	1.89	0.71
1:C:677:THR:OG1	1:C:683:LEU:HD22	1.89	0.71
1:B:681:GLY:HA2	1:B:683:LEU:HD23	1.70	0.71
1:B:609:ILE:CD1	1:B:717:LEU:HD21	2.22	0.69
1:C:609:ILE:CD1	1:C:717:LEU:HD21	2.22	0.69
1:A:609:ILE:CD1	1:A:717:LEU:HD21	2.23	0.69
1:C:438:VAL:HG11	1:C:742:LEU:CD1	2.23	0.69
1:C:453:GLU:OE2	1:C:780:VAL:HG21	1.93	0.69
1:D:438:VAL:HG11	1:D:742:LEU:CD1	2.24	0.69
1:D:453:GLU:OE2	1:D:780:VAL:HG21	1.93	0.69
1:D:609:ILE:CD1	1:D:717:LEU:HD21	2.22	0.69
1:B:434:LEU:O	1:B:438:VAL:HG12	1.94	0.68
1:A:438:VAL:HG11	1:A:742:LEU:CD1	2.23	0.68
1:A:621:TYR:OH	1:A:671:LEU:O	2.11	0.68
1:B:438:VAL:HG11	1:B:742:LEU:CD1	2.24	0.68
1:C:434:LEU:O	1:C:438:VAL:HG12	1.94	0.68
1:D:583:VAL:O	1:D:587:MET:HE2	1.94	0.68
1:A:434:LEU:O	1:A:438:VAL:HG12	1.94	0.67
1:A:453:GLU:OE2	1:A:780:VAL:HG21	1.93	0.67
1:B:453:GLU:OE2	1:B:780:VAL:HG21	1.93	0.67

Continued on next page...

Continued from previous page...

Atom-1	Atom-2	Interatomic distance (Å)	Clash overlap (Å)
1:C:434:LEU:HD13	1:C:455:ILE:HG23	1.77	0.67
1:D:434:LEU:O	1:D:438:VAL:HG12	1.94	0.66
1:B:621:TYR:OH	1:B:671:LEU:O	2.11	0.66
1:C:621:TYR:OH	1:C:671:LEU:O	2.11	0.66
1:B:434:LEU:HD13	1:B:455:ILE:HG23	1.78	0.66
1:A:227:ILE:HG23	1:A:257:LEU:HD11	1.78	0.66
1:A:474:ASN:ND2	2:A:901:XQ3:O42	2.29	0.66
1:C:600:GLY:O	1:C:603:SER:OG	2.07	0.66
1:B:474:ASN:ND2	2:B:901:XQ3:O42	2.29	0.66
1:B:627:GLY:O	1:B:630:SER:OG	2.14	0.66
1:D:227:ILE:HG23	1:D:257:LEU:HD11	1.78	0.66
1:C:660:CYS:O	1:C:661:ARG:HG2	1.97	0.65
1:B:724:GLN:O	1:B:726:SER:N	2.27	0.65
1:D:434:LEU:HD13	1:D:455:ILE:HG23	1.77	0.65
1:D:660:CYS:O	1:D:661:ARG:HG2	1.97	0.65
1:C:474:ASN:ND2	2:C:901:XQ3:O42	2.29	0.65
1:C:674:PHE:HA	1:C:677:THR:HG22	1.78	0.65
1:C:724:GLN:O	1:C:726:SER:N	2.27	0.65
1:B:227:ILE:HG23	1:B:257:LEU:HD11	1.78	0.65
1:D:607:GLN:HA	1:D:610:LEU:HD13	1.78	0.65
1:D:674:PHE:HA	1:D:677:THR:HG22	1.78	0.65
1:A:724:GLN:O	1:A:726:SER:N	2.27	0.65
1:C:591:TYR:OH	1:C:743:ASP:OD2	2.15	0.65
1:C:227:ILE:HG23	1:C:257:LEU:HD11	1.78	0.64
1:D:474:ASN:ND2	2:D:901:XQ3:O42	2.29	0.64
1:A:434:LEU:HD13	1:A:455:ILE:HG23	1.78	0.64
1:D:621:TYR:OH	1:D:671:LEU:O	2.11	0.64
1:C:607:GLN:HA	1:C:610:LEU:HD13	1.78	0.64
1:C:627:GLY:O	1:C:630:SER:OG	2.14	0.64
1:A:607:GLN:HA	1:A:610:LEU:HD13	1.78	0.64
1:A:660:CYS:O	1:A:661:ARG:HG2	1.97	0.64
1:B:674:PHE:HA	1:B:677:THR:HG22	1.78	0.64
1:B:607:GLN:HA	1:B:610:LEU:HD13	1.78	0.64
1:B:660:CYS:O	1:B:661:ARG:HG2	1.97	0.64
1:D:591:TYR:OH	1:D:743:ASP:OD2	2.15	0.64
1:C:672:ASP:OD1	1:C:673:LEU:N	2.31	0.64
1:A:627:GLY:O	1:A:630:SER:OG	2.14	0.64
1:A:674:PHE:HA	1:A:677:THR:HG22	1.78	0.64
1:B:591:TYR:OH	1:B:743:ASP:OD2	2.15	0.63
1:B:583:VAL:O	1:B:587:MET:HE2	1.98	0.63
1:D:401:HIS:O	1:D:775:ARG:NH1	2.32	0.63

Continued on next page...

Continued from previous page...

Atom-1	Atom-2	Interatomic distance (Å)	Clash overlap (Å)
1:D:672:ASP:OD1	1:D:673:LEU:N	2.31	0.63
1:C:401:HIS:O	1:C:775:ARG:NH1	2.32	0.63
1:C:583:VAL:O	1:C:587:MET:HE2	1.97	0.63
1:D:724:GLN:O	1:D:726:SER:N	2.27	0.63
1:A:672:ASP:OD1	1:A:673:LEU:N	2.31	0.63
1:A:591:TYR:OH	1:A:743:ASP:OD2	2.15	0.63
1:B:672:ASP:OD1	1:B:673:LEU:N	2.31	0.63
1:A:583:VAL:O	1:A:587:MET:HE2	1.98	0.62
1:A:401:HIS:O	1:A:775:ARG:NH1	2.32	0.62
1:B:586:TRP:HB3	1:C:623:LEU:HD11	1.81	0.62
1:B:588:ASN:O	1:B:588:ASN:ND2	2.33	0.62
1:D:588:ASN:O	1:D:588:ASN:ND2	2.33	0.62
1:A:490:TYR:CD2	1:B:626:ILE:HD11	2.35	0.62
1:A:626:ILE:HD11	1:D:490:TYR:CD2	2.35	0.62
1:C:490:TYR:CD2	1:D:626:ILE:HD11	2.35	0.62
1:B:401:HIS:O	1:B:775:ARG:NH1	2.32	0.62
1:A:586:TRP:HB3	1:B:623:LEU:HD11	1.81	0.61
1:A:623:LEU:HD11	1:D:586:TRP:HB3	1.81	0.61
1:B:490:TYR:CD2	1:C:626:ILE:HD11	2.35	0.61
1:C:588:ASN:ND2	1:C:588:ASN:O	2.33	0.61
1:D:396:ASP:OD1	1:D:399:THR:OG1	2.18	0.61
1:B:609:ILE:HD12	1:B:717:LEU:HD21	1.83	0.61
1:A:396:ASP:OD1	1:A:399:THR:OG1	2.18	0.61
1:C:586:TRP:HB3	1:D:623:LEU:HD11	1.81	0.61
1:C:396:ASP:OD1	1:C:399:THR:OG1	2.18	0.61
1:A:588:ASN:ND2	1:A:588:ASN:O	2.33	0.61
1:C:609:ILE:HD12	1:C:717:LEU:HD21	1.83	0.61
1:C:490:TYR:CB	1:D:626:ILE:HD11	2.31	0.60
1:A:497:THR:HG22	1:A:572:GLU:OE2	2.02	0.60
1:A:609:ILE:HD12	1:A:717:LEU:HD21	1.83	0.60
1:B:653:THR:HG22	1:B:655:PRO:HD2	1.84	0.60
1:D:609:ILE:HD12	1:D:717:LEU:HD21	1.83	0.60
1:C:497:THR:HG22	1:C:572:GLU:OE2	2.02	0.60
1:B:490:TYR:CB	1:C:626:ILE:HD11	2.31	0.60
1:D:627:GLY:O	1:D:630:SER:OG	2.14	0.60
1:B:396:ASP:OD1	1:B:399:THR:OG1	2.18	0.60
1:B:497:THR:HG22	1:B:572:GLU:OE2	2.02	0.60
1:A:490:TYR:CG	1:B:626:ILE:HD11	2.37	0.59
1:A:490:TYR:CB	1:B:626:ILE:HD11	2.31	0.59
1:D:649:GLN:OE1	1:D:651:ASN:ND2	2.36	0.59
1:A:626:ILE:HD11	1:D:490:TYR:CB	2.32	0.59

Continued on next page...

Continued from previous page...

Atom-1	Atom-2	Interatomic distance (Å)	Clash overlap (Å)
1:C:653:THR:HG22	1:C:655:PRO:HD2	1.84	0.59
1:D:497:THR:HG22	1:D:572:GLU:OE2	2.02	0.59
1:A:242:LEU:HD21	1:A:258:VAL:HG22	1.85	0.59
1:B:242:LEU:HD21	1:B:258:VAL:HG22	1.85	0.59
1:B:305:THR:OG1	1:B:306:GLU:OE1	2.18	0.59
1:A:649:GLN:OE1	1:A:651:ASN:ND2	2.36	0.59
1:C:649:GLN:OE1	1:C:651:ASN:ND2	2.36	0.59
1:A:653:THR:HG22	1:A:655:PRO:HD2	1.84	0.58
1:C:716:ALA:O	1:C:720:GLU:OE1	2.21	0.58
1:A:626:ILE:HD11	1:D:490:TYR:CG	2.38	0.58
1:B:649:GLN:OE1	1:B:651:ASN:ND2	2.36	0.58
1:B:490:TYR:CG	1:C:626:ILE:HD11	2.37	0.58
1:A:305:THR:OG1	1:A:306:GLU:OE1	2.18	0.58
1:A:716:ALA:O	1:A:720:GLU:OE1	2.21	0.58
1:C:490:TYR:CG	1:D:626:ILE:HD11	2.37	0.58
1:C:732:ILE:O	1:C:736:GLN:OE1	2.21	0.58
1:B:716:ALA:O	1:B:720:GLU:OE1	2.21	0.58
1:C:390:ILE:HG21	1:C:452:VAL:HG21	1.86	0.58
1:D:601:THR:HG21	1:D:728:GLU:CG	2.34	0.58
1:A:390:ILE:HG21	1:A:452:VAL:HG21	1.86	0.58
1:C:724:GLN:O	1:C:725:VAL:HG22	2.04	0.58
1:D:181:THR:OG1	1:D:222:ASN:ND2	2.37	0.58
1:D:653:THR:HG22	1:D:655:PRO:HD2	1.84	0.58
1:A:724:GLN:O	1:A:725:VAL:HG22	2.04	0.58
1:A:601:THR:HG21	1:A:728:GLU:CG	2.34	0.58
1:B:390:ILE:HG21	1:B:452:VAL:HG21	1.86	0.58
1:C:242:LEU:HD21	1:C:258:VAL:HG22	1.84	0.58
1:D:724:GLN:O	1:D:725:VAL:HG22	2.04	0.58
1:A:732:ILE:O	1:A:736:GLN:OE1	2.21	0.57
1:C:424:LEU:HD13	1:C:455:ILE:CD1	2.34	0.57
1:D:424:LEU:HD13	1:D:455:ILE:CD1	2.34	0.57
1:D:390:ILE:HG21	1:D:452:VAL:HG21	1.86	0.57
1:D:716:ALA:O	1:D:720:GLU:OE1	2.21	0.57
1:B:615:PHE:O	1:B:619:LEU:HD23	2.05	0.57
1:B:732:ILE:O	1:B:736:GLN:OE1	2.21	0.57
1:D:242:LEU:HD21	1:D:258:VAL:HG22	1.85	0.57
1:B:601:THR:HG21	1:B:728:GLU:CG	2.34	0.57
1:C:615:PHE:O	1:C:619:LEU:HD23	2.05	0.57
1:D:367:ASN:OD1	1:D:370:GLY:N	2.38	0.57
1:B:367:ASN:OD1	1:B:370:GLY:N	2.38	0.57
1:B:724:GLN:O	1:B:725:VAL:HG22	2.04	0.57

Continued on next page...

Continued from previous page...

Atom-1	Atom-2	Interatomic distance (Å)	Clash overlap (Å)
1:C:601:THR:HG21	1:C:728:GLU:CG	2.34	0.57
1:D:615:PHE:O	1:D:619:LEU:HD23	2.05	0.57
1:A:367:ASN:OD1	1:A:370:GLY:N	2.38	0.57
1:D:732:ILE:O	1:D:736:GLN:OE1	2.21	0.57
1:A:615:PHE:O	1:A:619:LEU:HD23	2.05	0.57
1:B:181:THR:OG1	1:B:222:ASN:ND2	2.37	0.57
1:B:424:LEU:HD13	1:B:455:ILE:CD1	2.34	0.57
1:B:584:LEU:O	1:B:588:ASN:N	2.38	0.57
1:C:420:ASP:OD2	1:C:775:ARG:NH2	2.37	0.57
1:A:408:ASP:OD2	1:A:779:ARG:NH2	2.36	0.57
1:A:584:LEU:O	1:A:588:ASN:N	2.38	0.57
1:C:367:ASN:OD1	1:C:370:GLY:N	2.38	0.57
1:D:408:ASP:OD2	1:D:779:ARG:NH2	2.36	0.57
1:A:424:LEU:HD13	1:A:455:ILE:CD1	2.34	0.56
1:C:181:THR:OG1	1:C:222:ASN:ND2	2.37	0.56
1:D:305:THR:OG1	1:D:306:GLU:OE1	2.18	0.56
1:A:225:GLU:OE1	1:A:225:GLU:N	2.38	0.56
1:C:225:GLU:N	1:C:225:GLU:OE1	2.38	0.56
1:C:584:LEU:O	1:C:588:ASN:N	2.38	0.56
1:D:225:GLU:OE1	1:D:225:GLU:N	2.38	0.56
1:B:225:GLU:N	1:B:225:GLU:OE1	2.38	0.56
1:C:677:THR:HA	1:C:683:LEU:HB3	1.88	0.56
1:A:420:ASP:OD2	1:A:775:ARG:NH2	2.37	0.56
1:B:677:THR:HA	1:B:683:LEU:HB3	1.88	0.56
1:A:181:THR:OG1	1:A:222:ASN:ND2	2.37	0.56
1:D:584:LEU:O	1:D:588:ASN:N	2.38	0.56
1:C:325:LEU:HD22	1:C:346:TYR:CE1	2.41	0.56
1:D:677:THR:HA	1:D:683:LEU:HB3	1.88	0.55
1:A:677:THR:HA	1:A:683:LEU:HB3	1.88	0.55
1:D:420:ASP:OD2	1:D:775:ARG:NH2	2.37	0.55
1:A:325:LEU:HD22	1:A:346:TYR:CE1	2.41	0.55
1:A:371:LEU:O	1:A:372:SER:OG	2.17	0.55
1:B:620:VAL:HG21	1:B:709:LEU:CD2	2.37	0.55
1:B:408:ASP:OD2	1:B:779:ARG:NH2	2.36	0.55
1:A:696:ILE:O	1:A:700:VAL:HG23	2.08	0.55
1:B:696:ILE:O	1:B:700:VAL:HG23	2.08	0.55
1:D:620:VAL:HG21	1:D:709:LEU:CD2	2.37	0.55
1:B:214:LEU:O	1:B:218:GLU:OE1	2.25	0.54
1:C:214:LEU:O	1:C:218:GLU:OE1	2.25	0.54
1:A:207:ASN:N	1:A:253:TYR:OH	2.41	0.54
1:B:420:ASP:OD2	1:B:775:ARG:NH2	2.37	0.54

Continued on next page...

Continued from previous page...

Atom-1	Atom-2	Interatomic distance (Å)	Clash overlap (Å)
1:C:207:ASN:N	1:C:253:TYR:OH	2.41	0.54
1:D:325:LEU:HD22	1:D:346:TYR:CE1	2.41	0.54
1:B:325:LEU:HD22	1:B:346:TYR:CE1	2.41	0.54
1:A:620:VAL:HG21	1:A:709:LEU:CD2	2.37	0.54
1:B:207:ASN:N	1:B:253:TYR:OH	2.41	0.54
1:C:408:ASP:OD2	1:C:779:ARG:NH2	2.36	0.54
1:C:620:VAL:HG21	1:C:709:LEU:CD2	2.37	0.54
1:D:696:ILE:O	1:D:700:VAL:HG23	2.08	0.54
1:B:601:THR:HG21	1:B:728:GLU:HG2	1.90	0.53
1:C:337:GLU:OE1	1:C:337:GLU:N	2.40	0.53
1:D:214:LEU:O	1:D:218:GLU:OE1	2.25	0.53
1:A:214:LEU:O	1:A:218:GLU:OE1	2.25	0.53
1:C:305:THR:OG1	1:C:306:GLU:OE1	2.18	0.53
1:C:392:ARG:NH2	1:C:402:LEU:O	2.42	0.53
1:C:601:THR:HG21	1:C:728:GLU:HG2	1.90	0.53
1:B:289:LEU:HD11	1:B:305:THR:CG2	2.39	0.53
1:A:289:LEU:HD11	1:A:305:THR:CG2	2.39	0.53
1:C:389:ILE:HD12	1:C:392:ARG:NH1	2.24	0.53
1:D:207:ASN:N	1:D:253:TYR:OH	2.41	0.53
1:A:392:ARG:NH2	1:A:402:LEU:O	2.42	0.53
1:B:389:ILE:HD12	1:B:392:ARG:NH1	2.24	0.53
1:B:390:ILE:HG23	1:B:391:ARG:HG3	1.91	0.53
1:C:227:ILE:HG21	1:C:262:ALA:HB2	1.91	0.53
1:C:696:ILE:O	1:C:700:VAL:HG23	2.08	0.53
1:D:390:ILE:HG23	1:D:391:ARG:HG3	1.91	0.53
1:B:741:ILE:O	1:B:745:GLU:OE1	2.27	0.53
1:D:601:THR:HG21	1:D:728:GLU:HG2	1.90	0.53
3:A:902:R2R:N18	1:B:681:GLY:HA3	2.24	0.53
1:C:390:ILE:HG23	1:C:391:ARG:HG3	1.91	0.53
1:A:389:ILE:HD12	1:A:392:ARG:NH1	2.24	0.52
1:A:390:ILE:HG23	1:A:391:ARG:HG3	1.91	0.52
1:A:601:THR:HG21	1:A:728:GLU:HG2	1.90	0.52
1:B:371:LEU:O	1:B:372:SER:OG	2.17	0.52
1:C:741:ILE:O	1:C:745:GLU:OE1	2.27	0.52
1:D:389:ILE:HD12	1:D:392:ARG:NH1	2.24	0.52
3:A:902:R2R:N19	1:D:681:GLY:HA3	2.24	0.52
3:A:902:R2R:N17	1:C:681:GLY:HA3	2.25	0.52
1:D:227:ILE:HG21	1:D:262:ALA:HB2	1.91	0.52
1:A:681:GLY:HA3	3:A:902:R2R:N16	2.25	0.52
1:A:718:MET:O	1:A:722:VAL:HG22	2.09	0.52
1:B:718:MET:O	1:B:722:VAL:HG22	2.09	0.52

Continued on next page...

Continued from previous page...

Atom-1	Atom-2	Interatomic distance (Å)	Clash overlap (Å)
1:D:392:ARG:NH2	1:D:402:LEU:O	2.42	0.52
1:D:663:SER:OG	1:D:663:SER:O	2.28	0.52
1:A:227:ILE:HG21	1:A:262:ALA:HB2	1.91	0.52
1:A:583:VAL:HG22	1:A:587:MET:HE2	1.92	0.52
1:A:325:LEU:HD22	1:A:346:TYR:CD1	2.45	0.52
1:A:677:THR:HG23	1:A:678:ILE:HG12	1.92	0.52
1:B:227:ILE:HG21	1:B:262:ALA:HB2	1.91	0.52
1:B:392:ARG:NH2	1:B:402:LEU:O	2.42	0.52
1:D:337:GLU:OE1	1:D:337:GLU:N	2.40	0.52
1:D:677:THR:HG23	1:D:678:ILE:HG12	1.92	0.52
1:C:718:MET:O	1:C:722:VAL:HG22	2.09	0.52
1:D:618:LEU:O	1:D:622:LEU:HD23	2.10	0.52
1:B:583:VAL:HG22	1:B:587:MET:HE2	1.92	0.52
1:B:677:THR:HG23	1:B:678:ILE:HG12	1.92	0.52
1:C:361:ASN:OD1	1:C:364:THR:HG23	2.10	0.52
1:D:289:LEU:HD11	1:D:305:THR:CG2	2.39	0.52
1:A:762:VAL:HG22	1:A:763:THR:H	1.75	0.52
1:C:289:LEU:HD11	1:C:305:THR:CG2	2.39	0.52
1:C:677:THR:HG23	1:C:678:ILE:HG12	1.92	0.52
1:D:718:MET:O	1:D:722:VAL:HG22	2.09	0.51
1:D:325:LEU:HD22	1:D:346:TYR:CD1	2.45	0.51
1:D:741:ILE:O	1:D:745:GLU:OE1	2.27	0.51
1:A:618:LEU:O	1:A:622:LEU:HD23	2.10	0.51
1:B:325:LEU:HD22	1:B:346:TYR:CD1	2.45	0.51
1:B:361:ASN:OD1	1:B:364:THR:HG23	2.10	0.51
1:A:663:SER:OG	1:A:663:SER:O	2.28	0.51
1:C:563:SER:OG	1:C:577:VAL:HG23	2.11	0.51
1:C:618:LEU:O	1:C:622:LEU:HD23	2.10	0.51
1:D:762:VAL:HG22	1:D:763:THR:H	1.75	0.51
1:D:361:ASN:OD1	1:D:364:THR:HG23	2.10	0.51
1:A:563:SER:OG	1:A:577:VAL:HG23	2.11	0.51
1:A:741:ILE:O	1:A:745:GLU:OE1	2.27	0.51
1:C:194:CYS:SG	1:C:213:LEU:HD12	2.51	0.51
1:C:325:LEU:HD22	1:C:346:TYR:CD1	2.45	0.51
1:D:563:SER:OG	1:D:577:VAL:HG23	2.11	0.51
1:B:314:MET:HE3	1:B:349:LEU:HD22	1.92	0.51
1:B:618:LEU:O	1:B:622:LEU:HD23	2.10	0.51
1:B:704:ILE:O	1:B:708:VAL:HG23	2.11	0.51
1:A:194:CYS:SG	1:A:213:LEU:HD12	2.51	0.51
1:C:371:LEU:O	1:C:372:SER:OG	2.17	0.51
1:C:583:VAL:HG22	1:C:587:MET:HE2	1.93	0.51

Continued on next page...

Continued from previous page...

Atom-1	Atom-2	Interatomic distance (Å)	Clash overlap (Å)
1:D:194:CYS:SG	1:D:213:LEU:HD12	2.51	0.51
1:D:600:GLY:O	1:D:603:SER:OG	2.07	0.51
1:B:663:SER:OG	1:B:663:SER:O	2.28	0.50
1:C:663:SER:OG	1:C:663:SER:O	2.28	0.50
1:C:673:LEU:O	1:C:677:THR:HG22	2.12	0.50
1:A:337:GLU:OE1	1:A:337:GLU:N	2.40	0.50
1:A:361:ASN:OD1	1:A:364:THR:HG23	2.10	0.50
1:B:563:SER:OG	1:B:577:VAL:HG23	2.11	0.50
1:B:673:LEU:O	1:B:677:THR:HG22	2.12	0.50
1:B:762:VAL:HG22	1:B:763:THR:H	1.75	0.50
1:B:194:CYS:SG	1:B:213:LEU:HD12	2.51	0.50
1:B:424:LEU:HD13	1:B:455:ILE:HD11	1.93	0.50
1:C:762:VAL:HG22	1:C:763:THR:H	1.75	0.50
1:A:704:ILE:O	1:A:708:VAL:HG23	2.11	0.50
1:A:673:LEU:O	1:A:677:THR:HG22	2.12	0.50
1:D:371:LEU:O	1:D:372:SER:OG	2.17	0.50
1:D:673:LEU:O	1:D:677:THR:HG22	2.12	0.50
1:B:337:GLU:OE1	1:B:337:GLU:N	2.40	0.50
1:B:664:GLU:O	1:B:665:THR:OG1	2.29	0.50
1:C:704:ILE:O	1:C:708:VAL:HG23	2.11	0.50
1:D:704:ILE:O	1:D:708:VAL:HG23	2.11	0.50
1:C:424:LEU:HD13	1:C:455:ILE:HD11	1.93	0.49
1:D:611:PHE:O	1:D:615:PHE:CD2	2.66	0.49
1:C:583:VAL:HG22	1:C:587:MET:CE	2.43	0.49
1:A:424:LEU:HD13	1:A:455:ILE:HD11	1.93	0.49
1:C:611:PHE:O	1:C:615:PHE:CD2	2.66	0.49
1:A:606:ILE:O	1:A:610:LEU:HD12	2.12	0.49
1:C:606:ILE:O	1:C:610:LEU:HD12	2.12	0.49
1:D:215:ASP:HA	1:D:218:GLU:OE1	2.12	0.49
1:A:611:PHE:O	1:A:615:PHE:CD2	2.66	0.49
1:C:205:GLY:O	1:C:206:ARG:NH1	2.46	0.49
1:D:205:GLY:O	1:D:206:ARG:NH1	2.46	0.49
1:B:611:PHE:O	1:B:615:PHE:CD2	2.66	0.49
1:B:583:VAL:HG22	1:B:587:MET:CE	2.42	0.49
1:C:586:TRP:CG	1:D:623:LEU:HD11	2.48	0.49
1:D:606:ILE:O	1:D:610:LEU:HD12	2.13	0.49
1:A:623:LEU:HD11	1:D:586:TRP:CG	2.48	0.49
1:C:215:ASP:HA	1:C:218:GLU:OE1	2.12	0.49
1:C:620:VAL:HG21	1:C:709:LEU:HD21	1.95	0.49
1:A:215:ASP:HA	1:A:218:GLU:OE1	2.12	0.49
1:A:586:TRP:CG	1:B:623:LEU:HD11	2.48	0.49

Continued on next page...

Continued from previous page...

Atom-1	Atom-2	Interatomic distance (Å)	Clash overlap (Å)
1:B:215:ASP:HA	1:B:218:GLU:OE1	2.12	0.49
1:B:657:TYR:CG	1:B:658:PRO:HD2	2.48	0.49
1:B:606:ILE:O	1:B:610:LEU:HD12	2.13	0.48
1:B:205:GLY:O	1:B:206:ARG:NH1	2.46	0.48
1:C:566:LEU:HD13	1:C:574:TYR:HB3	1.95	0.48
1:C:758:SER:OG	1:C:774:ARG:NE	2.40	0.48
1:A:657:TYR:CG	1:A:658:PRO:HD2	2.48	0.48
1:B:758:SER:OG	1:B:774:ARG:NE	2.40	0.48
1:D:583:VAL:HG22	1:D:587:MET:CE	2.42	0.48
1:C:657:TYR:CG	1:C:658:PRO:HD2	2.48	0.48
1:D:620:VAL:HG21	1:D:709:LEU:HD21	1.95	0.48
1:A:583:VAL:HG22	1:A:587:MET:CE	2.42	0.48
1:A:609:ILE:O	1:A:610:LEU:O	2.31	0.48
1:C:609:ILE:O	1:C:610:LEU:O	2.31	0.48
1:D:421:LEU:HD22	1:D:458:LEU:HD22	1.95	0.48
1:D:424:LEU:HD13	1:D:455:ILE:HD11	1.93	0.48
1:B:620:VAL:HG21	1:B:709:LEU:HD21	1.95	0.48
1:D:657:TYR:CG	1:D:658:PRO:HD2	2.48	0.48
1:A:205:GLY:O	1:A:206:ARG:NH1	2.46	0.48
1:B:586:TRP:CG	1:C:623:LEU:HD11	2.48	0.48
1:C:421:LEU:HD22	1:C:458:LEU:HD22	1.95	0.48
1:C:613:ASP:OD1	1:C:717:LEU:HD22	2.14	0.48
1:B:421:LEU:HD22	1:B:458:LEU:HD22	1.95	0.47
1:D:165:ASP:OD1	1:D:166:LEU:N	2.47	0.47
1:A:314:MET:HE3	1:A:349:LEU:HD22	1.95	0.47
1:A:620:VAL:HG21	1:A:709:LEU:HD21	1.95	0.47
1:D:613:ASP:OD1	1:D:717:LEU:HD22	2.14	0.47
1:A:165:ASP:OD1	1:A:166:LEU:N	2.47	0.47
1:B:165:ASP:OD1	1:B:166:LEU:N	2.47	0.47
1:A:566:LEU:HD13	1:A:574:TYR:HB3	1.95	0.47
1:A:613:ASP:OD1	1:A:717:LEU:HD22	2.14	0.47
1:A:758:SER:OG	1:A:774:ARG:NE	2.40	0.47
1:B:203:SER:N	1:B:207:ASN:OD1	2.48	0.47
1:D:203:SER:N	1:D:207:ASN:OD1	2.48	0.47
1:A:674:PHE:HA	1:A:677:THR:CG2	2.44	0.47
1:D:609:ILE:O	1:D:610:LEU:O	2.31	0.47
1:D:674:PHE:HA	1:D:677:THR:CG2	2.44	0.47
1:A:421:LEU:HD22	1:A:458:LEU:HD22	1.95	0.47
1:B:438:VAL:HG13	1:B:439:TYR:N	2.30	0.47
1:B:609:ILE:O	1:B:610:LEU:O	2.31	0.47
1:D:566:LEU:HD13	1:D:574:TYR:HB3	1.95	0.47

Continued on next page...

Continued from previous page...

Atom-1	Atom-2	Interatomic distance (Å)	Clash overlap (Å)
1:B:613:ASP:OD1	1:B:717:LEU:HD22	2.14	0.47
1:C:165:ASP:OD1	1:C:166:LEU:N	2.47	0.47
1:C:678:ILE:HD12	1:C:707:PHE:CE1	2.50	0.47
1:A:438:VAL:HG13	1:A:439:TYR:N	2.30	0.47
1:A:678:ILE:HD12	1:A:707:PHE:CE1	2.50	0.47
1:B:678:ILE:HD12	1:B:707:PHE:CE1	2.50	0.47
1:C:314:MET:HE3	1:C:349:LEU:HD22	1.97	0.47
1:D:484:ILE:HG22	1:D:484:ILE:O	2.14	0.47
1:A:484:ILE:HG22	1:A:484:ILE:O	2.14	0.47
1:B:566:LEU:HD13	1:B:574:TYR:HB3	1.95	0.47
1:D:452:VAL:O	1:D:453:GLU:CB	2.63	0.47
1:A:664:GLU:O	1:A:665:THR:OG1	2.29	0.46
1:C:438:VAL:HG13	1:C:439:TYR:N	2.30	0.46
1:A:685:MET:O	1:A:686:LEU:C	2.54	0.46
1:B:484:ILE:O	1:B:484:ILE:HG22	2.14	0.46
1:C:203:SER:N	1:C:207:ASN:OD1	2.48	0.46
1:D:678:ILE:HD12	1:D:707:PHE:CE1	2.50	0.46
1:A:203:SER:N	1:A:207:ASN:OD1	2.48	0.46
1:C:452:VAL:O	1:C:453:GLU:CB	2.63	0.46
1:C:484:ILE:HG22	1:C:484:ILE:O	2.14	0.46
1:C:674:PHE:HA	1:C:677:THR:CG2	2.44	0.46
1:B:210:ILE:N	1:B:211:PRO:HD2	2.31	0.46
1:B:685:MET:O	1:B:686:LEU:C	2.54	0.46
1:C:170:LEU:HD12	1:C:219:ARG:HE	1.81	0.46
1:D:170:LEU:HD12	1:D:219:ARG:HE	1.81	0.46
1:D:438:VAL:HG13	1:D:439:TYR:N	2.30	0.46
1:A:210:ILE:N	1:A:211:PRO:HD2	2.31	0.46
1:B:553:TYR:CE1	2:B:901:XQ3:O31	2.69	0.46
1:D:553:TYR:CE1	2:D:901:XQ3:O31	2.69	0.46
1:A:452:VAL:O	1:A:453:GLU:CB	2.63	0.46
1:D:210:ILE:N	1:D:211:PRO:HD2	2.31	0.46
1:D:637:ASN:N	1:D:638:PRO:CD	2.79	0.46
1:A:660:CYS:SG	1:A:661:ARG:N	2.89	0.45
1:B:452:VAL:O	1:B:453:GLU:CB	2.63	0.45
1:D:314:MET:HE3	1:D:349:LEU:HD22	1.97	0.45
1:D:685:MET:O	1:D:686:LEU:C	2.54	0.45
1:C:553:TYR:CE1	2:C:901:XQ3:O31	2.69	0.45
1:B:170:LEU:HD12	1:B:219:ARG:HE	1.81	0.45
1:B:637:ASN:N	1:B:638:PRO:CD	2.79	0.45
1:C:685:MET:O	1:C:686:LEU:C	2.54	0.45
1:A:170:LEU:HD12	1:A:219:ARG:HE	1.81	0.45

Continued on next page...

Continued from previous page...

Atom-1	Atom-2	Interatomic distance (Å)	Clash overlap (Å)
1:B:518:LEU:HD22	1:B:564:ALA:HB1	1.99	0.45
1:D:623:LEU:O	1:D:626:ILE:HG22	2.17	0.45
1:A:623:LEU:O	1:A:626:ILE:HG22	2.17	0.45
1:B:170:LEU:HD12	1:B:219:ARG:NE	2.32	0.45
1:B:660:CYS:SG	1:B:661:ARG:N	2.89	0.45
1:A:553:TYR:CE1	2:A:901:XQ3:O31	2.69	0.45
1:A:637:ASN:N	1:A:638:PRO:CD	2.79	0.45
1:D:660:CYS:SG	1:D:661:ARG:N	2.89	0.45
1:B:322:ASN:O	1:B:323:THR:CB	2.65	0.45
1:B:482:MET:HA	1:B:482:MET:CE	2.47	0.45
1:B:628:TYR:CE1	1:B:632:LEU:HD11	2.52	0.45
1:B:674:PHE:HA	1:B:677:THR:CG2	2.44	0.45
1:C:637:ASN:N	1:C:638:PRO:CD	2.79	0.45
1:A:518:LEU:HD22	1:A:564:ALA:HB1	1.99	0.44
1:A:784:ASN:OD1	1:A:785:TRP:N	2.50	0.44
1:C:210:ILE:N	1:C:211:PRO:HD2	2.31	0.44
1:D:583:VAL:HG22	1:D:587:MET:HE2	1.99	0.44
1:A:170:LEU:HD12	1:A:219:ARG:NE	2.32	0.44
1:A:504:THR:O	1:A:508:TYR:N	2.47	0.44
1:A:628:TYR:CE1	1:A:632:LEU:HD11	2.52	0.44
1:B:210:ILE:HD11	1:B:253:TYR:CD1	2.52	0.44
1:C:322:ASN:O	1:C:323:THR:CB	2.65	0.44
1:C:369:ASP:HB3	1:C:371:LEU:HD23	2.00	0.44
1:A:322:ASN:O	1:A:323:THR:CB	2.65	0.44
1:C:504:THR:O	1:C:508:TYR:N	2.47	0.44
1:C:623:LEU:O	1:C:626:ILE:HG22	2.17	0.44
1:C:660:CYS:SG	1:C:661:ARG:N	2.89	0.44
1:D:424:LEU:HD13	1:D:455:ILE:HD13	1.99	0.44
1:A:424:LEU:HD13	1:A:455:ILE:HD13	1.99	0.44
1:A:482:MET:CE	1:A:482:MET:HA	2.47	0.44
1:B:329:VAL:HG22	1:B:385:VAL:HG11	2.00	0.44
1:C:210:ILE:HD11	1:C:253:TYR:CD1	2.52	0.44
1:D:740:THR:O	1:D:744:ILE:HD12	2.17	0.44
1:A:737:TRP:CE2	1:A:741:ILE:HD11	2.52	0.44
1:B:623:LEU:O	1:B:626:ILE:HG22	2.17	0.44
1:C:329:VAL:HG22	1:C:385:VAL:HG11	2.00	0.44
1:C:475:VAL:HA	2:C:901:XQ3:CL37	2.55	0.44
1:D:322:ASN:O	1:D:323:THR:CB	2.65	0.44
1:D:329:VAL:HG22	1:D:385:VAL:HG11	2.00	0.44
1:D:369:ASP:HB3	1:D:371:LEU:HD23	2.00	0.44
1:A:195:LEU:HD22	1:A:226:PHE:HE1	1.83	0.44

Continued on next page...

Continued from previous page...

Atom-1	Atom-2	Interatomic distance (Å)	Clash overlap (Å)
1:C:170:LEU:HD12	1:C:219:ARG:NE	2.32	0.44
1:C:740:THR:O	1:C:744:ILE:HD12	2.17	0.44
1:A:329:VAL:HG22	1:A:385:VAL:HG11	2.00	0.44
1:B:784:ASN:OD1	1:B:785:TRP:N	2.50	0.44
1:C:424:LEU:HD13	1:C:455:ILE:HD13	1.99	0.44
1:A:289:LEU:HD12	1:A:312:ALA:HB3	2.00	0.44
1:A:475:VAL:HB	1:A:592:PHE:CE1	2.53	0.44
1:B:475:VAL:HA	2:B:901:XQ3:CL37	2.55	0.44
1:C:411:TYR:CG	1:D:247:GLU:OE2	2.71	0.44
1:C:628:TYR:CE1	1:C:632:LEU:HD11	2.52	0.44
1:D:664:GLU:O	1:D:665:THR:OG1	2.29	0.44
1:B:475:VAL:HB	1:B:592:PHE:CE1	2.53	0.44
1:C:518:LEU:HD22	1:C:564:ALA:HB1	1.99	0.44
1:C:784:ASN:OD1	1:C:785:TRP:N	2.50	0.44
1:D:394:VAL:HG11	1:D:399:THR:OG1	2.18	0.44
1:D:737:TRP:CE2	1:D:741:ILE:HD11	2.52	0.44
1:D:758:SER:OG	1:D:774:ARG:NE	2.40	0.44
1:B:394:VAL:N	1:B:403:SER:OG	2.50	0.43
1:B:585:GLY:HA2	1:B:588:ASN:HB3	2.00	0.43
1:B:369:ASP:HB3	1:B:371:LEU:HD23	2.00	0.43
1:B:712:ASN:O	1:B:713:MET:C	2.56	0.43
1:C:398:ASP:N	1:C:398:ASP:OD1	2.51	0.43
1:D:210:ILE:HD11	1:D:253:TYR:CD1	2.52	0.43
1:D:482:MET:HA	1:D:482:MET:CE	2.47	0.43
1:B:195:LEU:HD22	1:B:226:PHE:HE1	1.83	0.43
1:B:394:VAL:HG11	1:B:399:THR:OG1	2.18	0.43
1:C:482:MET:HA	1:C:482:MET:CE	2.47	0.43
1:D:628:TYR:CE1	1:D:632:LEU:HD11	2.52	0.43
1:A:586:TRP:CB	1:B:623:LEU:HD11	2.49	0.43
1:A:626:ILE:CD1	1:D:490:TYR:CB	2.97	0.43
1:A:683:LEU:HD21	1:D:682:ASP:OD2	2.18	0.43
1:A:740:THR:O	1:A:744:ILE:HD12	2.17	0.43
1:B:558:VAL:O	1:B:562:VAL:HG23	2.19	0.43
1:C:490:TYR:CB	1:D:626:ILE:CD1	2.96	0.43
1:D:195:LEU:HD22	1:D:226:PHE:HE1	1.83	0.43
1:D:504:THR:O	1:D:508:TYR:N	2.47	0.43
1:D:518:LEU:HD22	1:D:564:ALA:HB1	1.99	0.43
1:D:676:LEU:CD1	1:D:682:ASP:O	2.67	0.43
1:A:210:ILE:HD11	1:A:253:TYR:CD1	2.52	0.43
1:A:369:ASP:HB3	1:A:371:LEU:HD23	2.00	0.43
1:A:394:VAL:N	1:A:403:SER:OG	2.50	0.43

Continued on next page...

Continued from previous page...

Atom-1	Atom-2	Interatomic distance (Å)	Clash overlap (Å)
1:A:411:TYR:CG	1:B:247:GLU:OE2	2.71	0.43
1:B:630:SER:O	1:B:634:THR:HG22	2.19	0.43
1:C:585:GLY:HA2	1:C:588:ASN:HB3	2.00	0.43
1:C:712:ASN:O	1:C:713:MET:C	2.56	0.43
1:D:289:LEU:HD12	1:D:312:ALA:HB3	2.00	0.43
1:D:398:ASP:OD1	1:D:398:ASP:N	2.51	0.43
1:D:475:VAL:HB	1:D:592:PHE:CE1	2.53	0.43
1:A:398:ASP:N	1:A:398:ASP:OD1	2.51	0.43
1:A:475:VAL:HA	2:A:901:XQ3:CL37	2.55	0.43
1:A:712:ASN:O	1:A:713:MET:C	2.56	0.43
1:B:289:LEU:HD12	1:B:312:ALA:HB3	2.00	0.43
1:B:411:TYR:CG	1:C:247:GLU:OE2	2.71	0.43
1:B:682:ASP:OD2	1:C:683:LEU:HD21	2.18	0.43
1:B:740:THR:O	1:B:744:ILE:HD12	2.17	0.43
1:C:490:TYR:HB2	1:D:626:ILE:CD1	2.48	0.43
1:D:762:VAL:HG22	1:D:763:THR:N	2.34	0.43
1:A:626:ILE:HG21	1:D:486:THR:CG2	2.49	0.43
1:B:490:TYR:HB2	1:C:626:ILE:CD1	2.48	0.43
1:B:676:LEU:CD1	1:B:682:ASP:O	2.67	0.43
1:C:394:VAL:HG11	1:C:399:THR:OG1	2.18	0.43
1:C:558:VAL:O	1:C:562:VAL:HG23	2.19	0.43
1:D:585:GLY:HA2	1:D:588:ASN:HB3	2.00	0.43
1:A:490:TYR:HB2	1:B:626:ILE:CD1	2.49	0.43
1:B:370:GLY:C	1:B:371:LEU:HD22	2.39	0.43
1:C:475:VAL:HB	1:C:592:PHE:CE1	2.53	0.43
1:C:630:SER:O	1:C:634:THR:HG22	2.19	0.43
1:C:676:LEU:CD1	1:C:682:ASP:O	2.67	0.43
1:C:682:ASP:OD2	1:D:683:LEU:HD21	2.18	0.43
1:D:370:GLY:C	1:D:371:LEU:HD22	2.39	0.43
1:D:558:VAL:O	1:D:562:VAL:HG23	2.19	0.43
1:A:247:GLU:OE2	1:D:411:TYR:CG	2.72	0.43
1:A:394:VAL:HG11	1:A:399:THR:OG1	2.18	0.43
1:B:148:VAL:HG21	1:B:169:LEU:HD13	2.01	0.43
1:B:592:PHE:HB2	2:B:901:XQ3:CL37	2.56	0.43
1:C:592:PHE:HB2	2:C:901:XQ3:CL37	2.56	0.43
1:D:475:VAL:HA	2:D:901:XQ3:CL37	2.55	0.43
1:A:180:LEU:HD23	1:A:226:PHE:CE2	2.54	0.43
1:A:585:GLY:HA2	1:A:588:ASN:HB3	2.00	0.43
1:A:623:LEU:HD11	1:D:586:TRP:CB	2.49	0.43
1:B:674:PHE:CA	1:B:677:THR:HG22	2.48	0.43
1:B:724:GLN:O	1:B:725:VAL:CG2	2.67	0.43

Continued on next page...

Continued from previous page...

Atom-1	Atom-2	Interatomic distance (Å)	Clash overlap (Å)
1:D:170:LEU:HD12	1:D:219:ARG:NE	2.32	0.43
1:A:626:ILE:CD1	1:D:490:TYR:HB2	2.49	0.42
1:A:676:LEU:CD1	1:A:682:ASP:O	2.67	0.42
1:B:424:LEU:HD13	1:B:455:ILE:HD13	1.99	0.42
1:B:653:THR:HG22	1:B:655:PRO:CD	2.49	0.42
1:D:394:VAL:N	1:D:403:SER:OG	2.50	0.42
1:D:592:PHE:HB2	2:D:901:XQ3:CL37	2.56	0.42
1:A:490:TYR:HB2	1:B:626:ILE:HG13	2.01	0.42
1:C:195:LEU:HD22	1:C:226:PHE:HE1	1.83	0.42
1:C:265:HIS:NE2	1:C:313:ASP:OD1	2.49	0.42
1:C:289:LEU:HD12	1:C:312:ALA:HB3	2.00	0.42
1:C:370:GLY:C	1:C:371:LEU:HD22	2.39	0.42
1:C:486:THR:CG2	1:D:626:ILE:HG21	2.50	0.42
1:C:762:VAL:HG22	1:C:763:THR:N	2.34	0.42
1:A:558:VAL:O	1:A:562:VAL:HG23	2.19	0.42
1:B:737:TRP:CE2	1:B:741:ILE:HD11	2.52	0.42
1:C:611:PHE:O	1:C:612:LYS:C	2.57	0.42
1:A:370:GLY:C	1:A:371:LEU:HD22	2.39	0.42
1:A:657:TYR:HB3	1:A:663:SER:OG	2.19	0.42
1:B:657:TYR:HB3	1:B:663:SER:OG	2.20	0.42
1:A:346:TYR:CE2	1:A:389:ILE:HD13	2.55	0.42
1:A:630:SER:O	1:A:634:THR:HG22	2.19	0.42
1:A:758:SER:OG	1:A:759:GLY:N	2.53	0.42
1:B:346:TYR:CE2	1:B:389:ILE:HD13	2.55	0.42
1:B:486:THR:CG2	1:C:626:ILE:HG21	2.50	0.42
1:B:762:VAL:HG22	1:B:763:THR:N	2.34	0.42
1:C:148:VAL:HG21	1:C:169:LEU:HD13	2.01	0.42
1:C:193:THR:HG22	1:C:194:CYS:N	2.35	0.42
1:C:397:GLU:OE2	1:C:397:GLU:HA	2.20	0.42
1:C:425:ASP:N	1:C:425:ASP:OD1	2.53	0.42
1:C:630:SER:HA	1:C:633:VAL:HG22	2.02	0.42
1:D:676:LEU:HD13	1:D:682:ASP:O	2.19	0.42
1:D:703:ILE:HA	1:D:706:THR:HG22	2.01	0.42
1:D:784:ASN:OD1	1:D:785:TRP:N	2.50	0.42
1:A:397:GLU:OE2	1:A:397:GLU:HA	2.20	0.42
1:A:486:THR:CG2	1:B:626:ILE:HG21	2.49	0.42
1:A:592:PHE:HB2	2:A:901:XQ3:CL37	2.56	0.42
1:A:676:LEU:HD13	1:A:682:ASP:O	2.19	0.42
1:D:712:ASN:O	1:D:713:MET:C	2.56	0.42
1:D:758:SER:OG	1:D:759:GLY:N	2.53	0.42
1:A:626:ILE:CD1	1:D:490:TYR:CG	3.03	0.42

Continued on next page...

Continued from previous page...

Atom-1	Atom-2	Interatomic distance (Å)	Clash overlap (Å)
1:B:180:LEU:HD23	1:B:226:PHE:CE2	2.54	0.42
1:B:758:SER:OG	1:B:759:GLY:N	2.53	0.42
1:C:497:THR:O	1:C:499:PRO:CD	2.68	0.42
1:C:664:GLU:O	1:C:665:THR:OG1	2.29	0.42
1:C:737:TRP:CE2	1:C:741:ILE:HD11	2.52	0.42
1:D:346:TYR:CE2	1:D:389:ILE:HD13	2.55	0.42
1:D:611:PHE:O	1:D:612:LYS:C	2.57	0.42
1:A:425:ASP:OD1	1:A:425:ASP:N	2.53	0.42
1:B:193:THR:HG22	1:B:194:CYS:H	1.84	0.42
1:B:611:PHE:O	1:B:612:LYS:C	2.57	0.42
1:C:180:LEU:HD23	1:C:226:PHE:CE2	2.54	0.42
1:C:346:TYR:CE2	1:C:389:ILE:HD13	2.55	0.42
1:D:180:LEU:HD23	1:D:226:PHE:CE2	2.54	0.42
1:D:397:GLU:HA	1:D:397:GLU:OE2	2.20	0.42
1:A:762:VAL:HG22	1:A:763:THR:N	2.34	0.42
1:B:497:THR:O	1:B:499:PRO:CD	2.68	0.42
1:C:703:ILE:O	1:C:706:THR:HG22	2.20	0.42
1:D:653:THR:HG22	1:D:655:PRO:CD	2.49	0.42
1:A:193:THR:HG22	1:A:194:CYS:N	2.35	0.42
1:A:703:ILE:HA	1:A:706:THR:HG22	2.01	0.42
1:A:703:ILE:O	1:A:706:THR:HG22	2.20	0.42
1:B:265:HIS:NE2	1:B:313:ASP:OD1	2.49	0.42
1:B:703:ILE:HA	1:B:706:THR:HG22	2.01	0.42
1:C:496:GLY:O	1:C:497:THR:OG1	2.38	0.42
1:D:193:THR:HG22	1:D:194:CYS:N	2.35	0.42
1:A:490:TYR:CB	1:B:626:ILE:CD1	2.96	0.41
1:A:601:THR:HG21	1:A:728:GLU:HB3	2.02	0.41
1:A:630:SER:HA	1:A:633:VAL:HG22	2.02	0.41
1:A:682:ASP:OD2	1:B:683:LEU:HD21	2.19	0.41
1:B:490:TYR:CB	1:C:626:ILE:CD1	2.96	0.41
1:D:497:THR:O	1:D:499:PRO:CD	2.68	0.41
1:D:657:TYR:HB3	1:D:663:SER:OG	2.19	0.41
1:A:497:THR:O	1:A:499:PRO:CD	2.68	0.41
1:B:161:GLY:HA2	1:B:209:THR:HG21	2.02	0.41
1:B:296:ASN:HA	1:B:341:PHE:CZ	2.56	0.41
1:B:488:THR:O	1:B:488:THR:HG22	2.20	0.41
1:D:193:THR:HG22	1:D:194:CYS:H	1.84	0.41
1:D:425:ASP:N	1:D:425:ASP:OD1	2.53	0.41
1:A:193:THR:HG22	1:A:194:CYS:H	1.84	0.41
1:B:193:THR:HG22	1:B:194:CYS:N	2.35	0.41
1:B:425:ASP:OD1	1:B:425:ASP:N	2.53	0.41

Continued on next page...

Continued from previous page...

Atom-1	Atom-2	Interatomic distance (Å)	Clash overlap (Å)
1:C:193:THR:HG22	1:C:194:CYS:H	1.84	0.41
1:C:657:TYR:HB3	1:C:663:SER:OG	2.19	0.41
1:D:242:LEU:HD11	1:D:262:ALA:CB	2.51	0.41
1:D:289:LEU:HD11	1:D:305:THR:HG22	2.02	0.41
1:D:724:GLN:O	1:D:725:VAL:CG2	2.67	0.41
1:A:246:ILE:HG23	1:A:300:ILE:HG21	2.03	0.41
1:A:626:ILE:HG13	1:D:490:TYR:HB2	2.01	0.41
1:B:397:GLU:OE2	1:B:397:GLU:HA	2.20	0.41
1:B:601:THR:HG21	1:B:728:GLU:HB3	2.02	0.41
1:C:289:LEU:HD11	1:C:305:THR:HG22	2.02	0.41
1:C:488:THR:O	1:C:488:THR:HG22	2.20	0.41
1:D:630:SER:HA	1:D:633:VAL:HG22	2.02	0.41
1:B:242:LEU:HD11	1:B:262:ALA:CB	2.51	0.41
1:B:289:LEU:HD11	1:B:305:THR:HG22	2.02	0.41
1:C:408:ASP:OD2	1:C:779:ARG:NH1	2.53	0.41
1:C:711:LEU:O	1:C:715:ILE:HD12	2.21	0.41
1:D:148:VAL:HG21	1:D:169:LEU:HD13	2.01	0.41
1:D:610:LEU:HB3	1:D:611:PHE:H	1.72	0.41
1:D:703:ILE:O	1:D:706:THR:HG22	2.20	0.41
1:A:724:GLN:O	1:A:725:VAL:CG2	2.67	0.41
1:B:490:TYR:HB2	1:C:626:ILE:HG13	2.01	0.41
1:B:620:VAL:HG21	1:B:709:LEU:HD22	2.02	0.41
1:B:630:SER:HA	1:B:633:VAL:HG22	2.02	0.41
1:C:161:GLY:HA2	1:C:209:THR:HG21	2.03	0.41
1:C:296:ASN:HA	1:C:341:PHE:CZ	2.56	0.41
1:C:724:GLN:O	1:C:725:VAL:CG2	2.67	0.41
1:A:490:TYR:CG	1:B:626:ILE:CD1	3.03	0.41
1:A:610:LEU:HB3	1:A:611:PHE:H	1.72	0.41
1:D:630:SER:O	1:D:634:THR:HG22	2.19	0.41
1:A:148:VAL:HG21	1:A:169:LEU:HD13	2.01	0.41
1:A:296:ASN:HA	1:A:341:PHE:CZ	2.56	0.41
1:B:676:LEU:HD13	1:B:682:ASP:O	2.19	0.41
1:C:246:ILE:HG23	1:C:300:ILE:HG21	2.03	0.41
1:C:470:SER:HA	1:C:473:ILE:HG12	2.02	0.41
1:C:620:VAL:HG21	1:C:709:LEU:HD22	2.02	0.41
1:C:672:ASP:OD1	1:C:672:ASP:C	2.59	0.41
1:D:711:LEU:O	1:D:715:ILE:HD12	2.21	0.41
1:A:674:PHE:CA	1:A:677:THR:HG22	2.48	0.41
1:B:490:TYR:CG	1:C:626:ILE:CD1	3.03	0.41
1:B:711:LEU:O	1:B:715:ILE:HD12	2.21	0.41
1:C:504:THR:OG1	1:C:505:THR:N	2.54	0.41

Continued on next page...

Continued from previous page...

Atom-1	Atom-2	Interatomic distance (Å)	Clash overlap (Å)
1:C:586:TRP:CB	1:D:623:LEU:HD11	2.48	0.41
1:D:296:ASN:HA	1:D:341:PHE:CZ	2.55	0.41
1:A:611:PHE:O	1:A:612:LYS:C	2.57	0.41
1:B:398:ASP:OD1	1:B:398:ASP:N	2.51	0.41
1:C:490:TYR:HB2	1:D:626:ILE:HG13	2.01	0.41
1:C:676:LEU:HD13	1:C:682:ASP:O	2.19	0.41
1:D:488:THR:O	1:D:488:THR:HG22	2.20	0.41
1:D:504:THR:OG1	1:D:505:THR:N	2.54	0.41
1:A:711:LEU:O	1:A:715:ILE:HD12	2.21	0.40
1:B:246:ILE:HG23	1:B:300:ILE:HG21	2.03	0.40
1:B:408:ASP:OD2	1:B:779:ARG:NH1	2.53	0.40
1:B:672:ASP:OD1	1:B:672:ASP:C	2.59	0.40
1:C:383:ILE:HG23	1:C:384:GLY:N	2.36	0.40
1:C:703:ILE:HA	1:C:706:THR:HG22	2.01	0.40
1:C:758:SER:OG	1:C:759:GLY:N	2.53	0.40
1:A:242:LEU:HD11	1:A:262:ALA:CB	2.51	0.40
1:A:289:LEU:HD11	1:A:305:THR:HG22	2.02	0.40
1:A:470:SER:HA	1:A:473:ILE:HG12	2.03	0.40
1:A:653:THR:HG22	1:A:655:PRO:CD	2.49	0.40
1:B:504:THR:OG1	1:B:505:THR:N	2.54	0.40
1:C:242:LEU:HD11	1:C:262:ALA:CB	2.51	0.40
1:C:490:TYR:CG	1:D:626:ILE:CD1	3.03	0.40
1:D:383:ILE:HG23	1:D:384:GLY:N	2.36	0.40
1:D:601:THR:HG21	1:D:728:GLU:HB3	2.02	0.40
1:A:161:GLY:HA2	1:A:209:THR:HG21	2.03	0.40
1:B:383:ILE:HG23	1:B:384:GLY:N	2.36	0.40
1:B:480:CYS:O	1:B:484:ILE:HG12	2.21	0.40
1:B:703:ILE:O	1:B:706:THR:HG22	2.20	0.40
1:C:480:CYS:O	1:C:484:ILE:HG12	2.21	0.40
1:B:431:VAL:CG2	1:B:436:ILE:HD11	2.52	0.40
1:B:504:THR:O	1:B:508:TYR:N	2.47	0.40
1:D:161:GLY:HA2	1:D:209:THR:HG21	2.03	0.40
1:A:620:VAL:HG21	1:A:709:LEU:HD22	2.02	0.40
1:B:323:THR:HG21	1:B:365:VAL:HG11	2.04	0.40
1:B:753:ARG:HD2	1:B:753:ARG:O	2.22	0.40
1:C:431:VAL:CG2	1:C:436:ILE:HD11	2.52	0.40
1:C:601:THR:HG21	1:C:728:GLU:HB3	2.02	0.40
1:D:620:VAL:HG21	1:D:709:LEU:HD22	2.02	0.40

There are no symmetry-related clashes.

5.3 Torsion angles

5.3.1 Protein backbone

In the following table, the Percentiles column shows the percent Ramachandran outliers of the chain as a percentile score with respect to all PDB entries followed by that with respect to all EM entries.

The Analysed column shows the number of residues for which the backbone conformation was analysed, and the total number of residues.

Mol	Chain	Analysed	Favoured	Allowed	Outliers	Percentiles	
1	A	587/700 (84%)	522 (89%)	59 (10%)	6 (1%)	15	51
1	B	587/700 (84%)	522 (89%)	59 (10%)	6 (1%)	15	51
1	C	587/700 (84%)	522 (89%)	59 (10%)	6 (1%)	15	51
1	D	587/700 (84%)	521 (89%)	60 (10%)	6 (1%)	15	51
All	All	2348/2800 (84%)	2087 (89%)	237 (10%)	24 (1%)	20	51

All (24) Ramachandran outliers are listed below:

Mol	Chain	Res	Type
1	A	453	GLU
1	A	610	LEU
1	A	680	MET
1	B	453	GLU
1	B	610	LEU
1	B	680	MET
1	C	453	GLU
1	C	610	LEU
1	C	680	MET
1	D	453	GLU
1	D	610	LEU
1	D	680	MET
1	A	686	LEU
1	B	686	LEU
1	C	686	LEU
1	D	686	LEU
1	A	658	PRO
1	B	658	PRO
1	C	658	PRO
1	D	658	PRO
1	A	725	VAL
1	B	725	VAL

Continued on next page...

Continued from previous page...

Mol	Chain	Res	Type
1	C	725	VAL
1	D	725	VAL

5.3.2 Protein sidechains ⓘ

In the following table, the Percentiles column shows the percent sidechain outliers of the chain as a percentile score with respect to all PDB entries followed by that with respect to all EM entries.

The Analysed column shows the number of residues for which the sidechain conformation was analysed, and the total number of residues.

Mol	Chain	Analysed	Rotameric	Outliers	Percentiles	
1	A	529/617 (86%)	527 (100%)	2 (0%)	91	95
1	B	529/617 (86%)	527 (100%)	2 (0%)	91	95
1	C	529/617 (86%)	527 (100%)	2 (0%)	91	95
1	D	529/617 (86%)	527 (100%)	2 (0%)	91	95
All	All	2116/2468 (86%)	2108 (100%)	8 (0%)	91	95

All (8) residues with a non-rotameric sidechain are listed below:

Mol	Chain	Res	Type
1	A	588	ASN
1	A	680	MET
1	B	588	ASN
1	B	680	MET
1	C	588	ASN
1	C	680	MET
1	D	588	ASN
1	D	680	MET

Sometimes sidechains can be flipped to improve hydrogen bonding and reduce clashes. All (19) such sidechains are listed below:

Mol	Chain	Res	Type
1	A	222	ASN
1	A	388	HIS
1	A	651	ASN
1	A	712	ASN
1	A	724	GLN
1	B	222	ASN

Continued on next page...

Continued from previous page...

Mol	Chain	Res	Type
1	B	388	HIS
1	B	651	ASN
1	B	712	ASN
1	B	724	GLN
1	C	222	ASN
1	C	388	HIS
1	C	651	ASN
1	C	712	ASN
1	C	724	GLN
1	D	222	ASN
1	D	651	ASN
1	D	712	ASN
1	D	724	GLN

5.3.3 RNA [i](#)

There are no RNA molecules in this entry.

5.4 Non-standard residues in protein, DNA, RNA chains [i](#)

There are no non-standard protein/DNA/RNA residues in this entry.

5.5 Carbohydrates [i](#)

There are no monosaccharides in this entry.

5.6 Ligand geometry [i](#)

5 ligands are modelled in this entry.

In the following table, the Counts columns list the number of bonds (or angles) for which Mogul statistics could be retrieved, the number of bonds (or angles) that are observed in the model and the number of bonds (or angles) that are defined in the Chemical Component Dictionary. The Link column lists molecule types, if any, to which the group is linked. The Z score for a bond length (or angle) is the number of standard deviations the observed value is removed from the expected value. A bond length (or angle) with $|Z| > 2$ is considered an outlier worth inspection. RMSZ is the root-mean-square of all Z scores of the bond lengths (or angles).

Mol	Type	Chain	Res	Link	Bond lengths			Bond angles		
					Counts	RMSZ	$\# Z > 2$	Counts	RMSZ	$\# Z > 2$
2	XQ3	B	901	-	41,45,45	2.43	12 (29%)	54,65,65	2.52	12 (22%)

Mol	Type	Chain	Res	Link	Bond lengths			Bond angles		
					Counts	RMSZ	# Z > 2	Counts	RMSZ	# Z > 2
2	XQ3	D	901	-	41,45,45	2.43	12 (29%)	54,65,65	2.52	12 (22%)
2	XQ3	A	901	-	41,45,45	2.43	12 (29%)	54,65,65	2.53	12 (22%)
2	XQ3	C	901	-	41,45,45	2.43	12 (29%)	54,65,65	2.53	12 (22%)
3	R2R	A	902	-	14,18,18	3.86	14 (100%)	-		

In the following table, the Chirals column lists the number of chiral outliers, the number of chiral centers analysed, the number of these observed in the model and the number defined in the Chemical Component Dictionary. Similar counts are reported in the Torsion and Rings columns. '-' means no outliers of that kind were identified.

Mol	Type	Chain	Res	Link	Chirals	Torsions	Rings
2	XQ3	C	901	-	-	12/39/51/51	0/4/4/4
2	XQ3	D	901	-	-	12/39/51/51	0/4/4/4
2	XQ3	B	901	-	-	12/39/51/51	0/4/4/4
2	XQ3	A	901	-	-	12/39/51/51	0/4/4/4

All (62) bond length outliers are listed below:

Mol	Chain	Res	Type	Atoms	Z	Observed(Å)	Ideal(Å)
2	D	901	XQ3	C18-N19	8.01	1.46	1.34
2	A	901	XQ3	C18-N19	7.97	1.46	1.34
2	C	901	XQ3	C18-N19	7.95	1.46	1.34
2	B	901	XQ3	C18-N19	7.95	1.46	1.34
2	D	901	XQ3	C25-N22	7.61	1.45	1.34
2	A	901	XQ3	C25-N22	7.61	1.45	1.34
2	C	901	XQ3	C25-N22	7.61	1.45	1.34
2	B	901	XQ3	C25-N22	7.57	1.45	1.34
2	C	901	XQ3	S30-N29	5.43	1.70	1.61
2	A	901	XQ3	S30-N29	5.40	1.70	1.61
2	D	901	XQ3	S30-N29	5.40	1.70	1.61
2	B	901	XQ3	S30-N29	5.40	1.70	1.61
2	A	901	XQ3	C07-N06	5.07	1.45	1.34
2	B	901	XQ3	C07-N06	5.07	1.45	1.34
2	C	901	XQ3	C07-N06	5.07	1.45	1.34
2	D	901	XQ3	C07-N06	5.07	1.45	1.34
3	A	902	R2R	RU2-N01	-4.17	2.04	2.11
3	A	902	R2R	RU2-N05	-4.07	2.04	2.11
2	B	901	XQ3	C08-S16	3.98	1.77	1.72
2	A	901	XQ3	C08-S16	3.94	1.77	1.72
2	D	901	XQ3	C08-S16	3.94	1.77	1.72

Continued on next page...

Continued from previous page...

Mol	Chain	Res	Type	Atoms	Z	Observed(Å)	Ideal(Å)
3	A	902	R2R	RU2-N04	-3.92	2.04	2.11
2	C	901	XQ3	C08-S16	3.91	1.77	1.72
3	A	902	R2R	RU2-N03	-3.90	2.04	2.11
3	A	902	R2R	RU1-N17	-3.90	2.04	2.10
3	A	902	R2R	RU1-N18	-3.90	2.04	2.10
3	A	902	R2R	RU3-N10	-3.86	2.04	2.10
3	A	902	R2R	RU3-N12	-3.83	2.04	2.10
3	A	902	R2R	RU3-N08	-3.80	2.04	2.10
3	A	902	R2R	RU1-N19	-3.80	2.04	2.10
3	A	902	R2R	RU3-N09	-3.79	2.04	2.10
3	A	902	R2R	RU3-N11	-3.79	2.04	2.10
3	A	902	R2R	RU1-N15	-3.74	2.04	2.10
3	A	902	R2R	RU1-N16	-3.61	2.04	2.10
2	A	901	XQ3	O40-S30	2.88	1.46	1.43
2	B	901	XQ3	O40-S30	2.88	1.46	1.43
2	C	901	XQ3	O40-S30	2.88	1.46	1.43
2	D	901	XQ3	O40-S30	2.86	1.46	1.43
2	D	901	XQ3	C32-S30	2.49	1.81	1.77
2	A	901	XQ3	C32-S30	2.48	1.81	1.77
2	C	901	XQ3	C32-S30	2.48	1.81	1.77
2	B	901	XQ3	C32-S30	2.41	1.81	1.77
2	A	901	XQ3	O31-S30	2.39	1.46	1.43
2	B	901	XQ3	O31-S30	2.39	1.46	1.43
2	C	901	XQ3	O31-S30	2.39	1.46	1.43
2	D	901	XQ3	O31-S30	2.39	1.46	1.43
2	B	901	XQ3	O17-C07	-2.28	1.18	1.23
2	D	901	XQ3	O17-C07	-2.25	1.18	1.23
2	A	901	XQ3	O17-C07	-2.25	1.18	1.23
2	C	901	XQ3	O17-C07	-2.22	1.18	1.23
2	D	901	XQ3	C33-CL34	2.22	1.78	1.73
2	B	901	XQ3	C33-CL34	2.20	1.78	1.73
2	C	901	XQ3	C33-CL34	2.20	1.78	1.73
2	A	901	XQ3	C33-CL34	2.19	1.78	1.73
2	B	901	XQ3	O41-C25	-2.06	1.18	1.22
2	A	901	XQ3	O41-C25	-2.05	1.18	1.22
2	C	901	XQ3	O41-C25	-2.05	1.18	1.22
2	D	901	XQ3	O41-C25	-2.05	1.18	1.22
2	A	901	XQ3	O42-C18	-2.02	1.18	1.22
2	B	901	XQ3	O42-C18	-2.02	1.18	1.22
2	C	901	XQ3	O42-C18	-2.02	1.18	1.22
2	D	901	XQ3	O42-C18	-2.02	1.18	1.22

All (48) bond angle outliers are listed below:

Mol	Chain	Res	Type	Atoms	Z	Observed(°)	Ideal(°)
2	A	901	XQ3	O40-S30-O31	-13.42	103.06	119.55
2	B	901	XQ3	O40-S30-O31	-13.42	103.06	119.55
2	C	901	XQ3	O40-S30-O31	-13.42	103.06	119.55
2	D	901	XQ3	O40-S30-O31	-13.40	103.08	119.55
2	C	901	XQ3	C33-C32-S30	-6.99	118.68	123.25
2	A	901	XQ3	C33-C32-S30	-6.94	118.71	123.25
2	B	901	XQ3	C33-C32-S30	-6.92	118.72	123.25
2	D	901	XQ3	C33-C32-S30	-6.89	118.75	123.25
2	D	901	XQ3	O40-S30-N29	3.73	113.63	106.88
2	A	901	XQ3	O40-S30-N29	3.72	113.61	106.88
2	C	901	XQ3	O40-S30-N29	3.71	113.60	106.88
2	B	901	XQ3	O40-S30-N29	3.69	113.57	106.88
2	C	901	XQ3	C25-C26-N29	-3.53	101.42	110.67
2	A	901	XQ3	C25-C26-N29	-3.52	101.45	110.67
2	B	901	XQ3	C25-C26-N29	-3.52	101.45	110.67
2	D	901	XQ3	C25-C26-N29	-3.51	101.47	110.67
2	B	901	XQ3	O40-S30-C32	3.39	113.24	107.66
2	A	901	XQ3	O40-S30-C32	3.39	113.23	107.66
2	C	901	XQ3	O40-S30-C32	3.39	113.23	107.66
2	D	901	XQ3	O40-S30-C32	3.38	113.23	107.66
2	D	901	XQ3	C24-N19-C20	3.19	118.76	112.62
2	A	901	XQ3	C24-N19-C20	3.17	118.72	112.62
2	B	901	XQ3	C24-N19-C20	3.16	118.71	112.62
2	C	901	XQ3	C24-N19-C20	3.15	118.69	112.62
2	B	901	XQ3	C39-C32-S30	2.95	121.42	117.42
2	C	901	XQ3	C39-C32-S30	2.93	121.40	117.42
2	A	901	XQ3	C39-C32-S30	2.91	121.37	117.42
2	D	901	XQ3	C39-C32-S30	2.91	121.37	117.42
2	D	901	XQ3	C23-N22-C21	2.79	118.00	112.62
2	C	901	XQ3	C23-N22-C21	2.79	118.00	112.62
2	A	901	XQ3	C23-N22-C21	2.79	118.00	112.62
2	B	901	XQ3	C23-N22-C21	2.79	118.00	112.62
2	C	901	XQ3	C24-C23-N22	-2.52	105.03	110.44
2	A	901	XQ3	C24-C23-N22	-2.51	105.06	110.44
2	B	901	XQ3	C24-C23-N22	-2.50	105.08	110.44
2	D	901	XQ3	C24-C23-N22	-2.50	105.08	110.44
2	B	901	XQ3	O42-C18-N19	-2.46	118.78	121.67
2	D	901	XQ3	O42-C18-N19	-2.45	118.79	121.67
2	D	901	XQ3	C32-C33-CL34	-2.44	119.71	121.49
2	A	901	XQ3	O42-C18-N19	-2.43	118.82	121.67
2	C	901	XQ3	O42-C18-N19	-2.42	118.83	121.67
2	B	901	XQ3	C32-C33-CL34	-2.41	119.73	121.49
2	A	901	XQ3	C32-C33-CL34	-2.40	119.73	121.49

Continued on next page...

Continued from previous page...

Mol	Chain	Res	Type	Atoms	Z	Observed(°)	Ideal(°)
2	C	901	XQ3	C32-C33-CL34	-2.35	119.77	121.49
2	B	901	XQ3	C05-C18-N19	2.12	122.07	118.87
2	D	901	XQ3	C05-C18-N19	2.11	122.06	118.87
2	A	901	XQ3	C05-C18-N19	2.09	122.03	118.87
2	C	901	XQ3	C05-C18-N19	2.08	122.02	118.87

There are no chirality outliers.

All (48) torsion outliers are listed below:

Mol	Chain	Res	Type	Atoms
2	A	901	XQ3	C27-C26-N29-S30
2	A	901	XQ3	N06-C07-C08-C09
2	A	901	XQ3	O17-C07-C08-C09
2	B	901	XQ3	C27-C26-N29-S30
2	B	901	XQ3	N06-C07-C08-C09
2	B	901	XQ3	O17-C07-C08-C09
2	C	901	XQ3	C27-C26-N29-S30
2	C	901	XQ3	N06-C07-C08-C09
2	C	901	XQ3	O17-C07-C08-C09
2	D	901	XQ3	C27-C26-N29-S30
2	D	901	XQ3	N06-C07-C08-C09
2	D	901	XQ3	O17-C07-C08-C09
2	A	901	XQ3	C26-N29-S30-O31
2	B	901	XQ3	C26-N29-S30-O31
2	C	901	XQ3	C26-N29-S30-O31
2	D	901	XQ3	C26-N29-S30-O31
2	A	901	XQ3	C02-C04-C05-C18
2	B	901	XQ3	C02-C04-C05-C18
2	C	901	XQ3	C02-C04-C05-C18
2	D	901	XQ3	C02-C04-C05-C18
2	A	901	XQ3	C26-N29-S30-C32
2	B	901	XQ3	C26-N29-S30-C32
2	C	901	XQ3	C26-N29-S30-C32
2	D	901	XQ3	C26-N29-S30-C32
2	A	901	XQ3	C02-C04-C05-N06
2	B	901	XQ3	C02-C04-C05-N06
2	C	901	XQ3	C02-C04-C05-N06
2	D	901	XQ3	C02-C04-C05-N06
2	A	901	XQ3	C25-C26-C27-O28
2	A	901	XQ3	N29-C26-C27-O28
2	B	901	XQ3	C25-C26-C27-O28
2	B	901	XQ3	N29-C26-C27-O28

Continued on next page...

Continued from previous page...

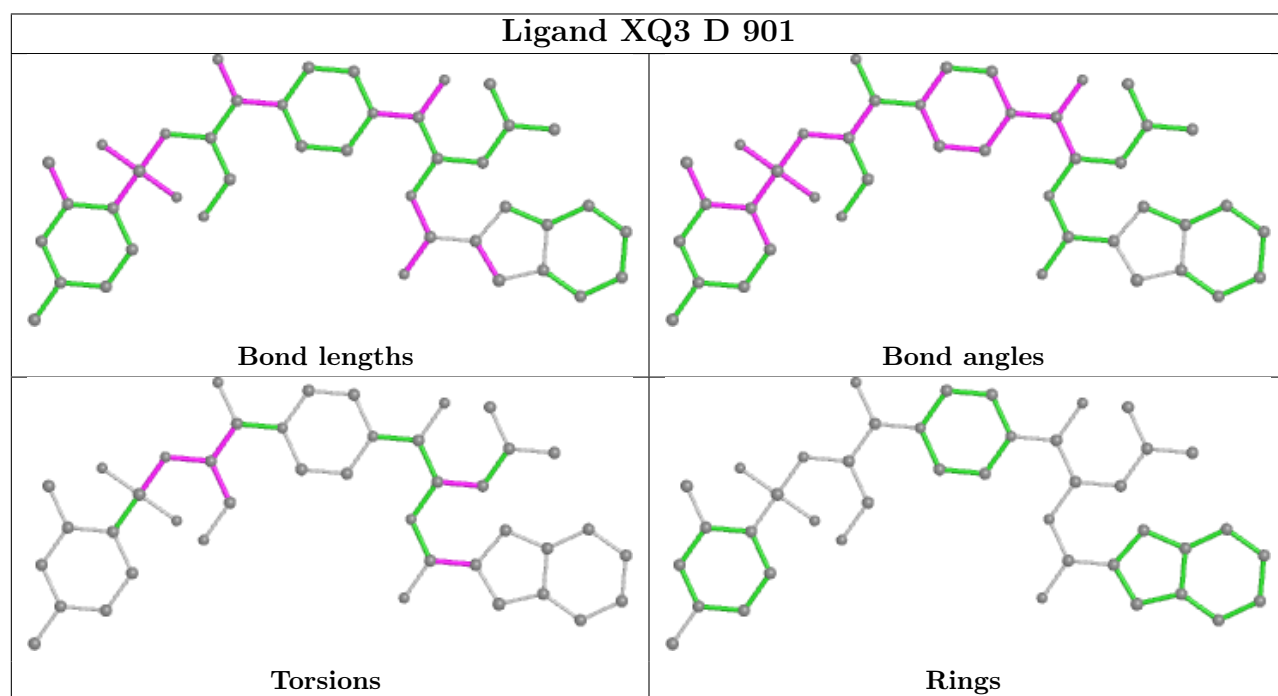
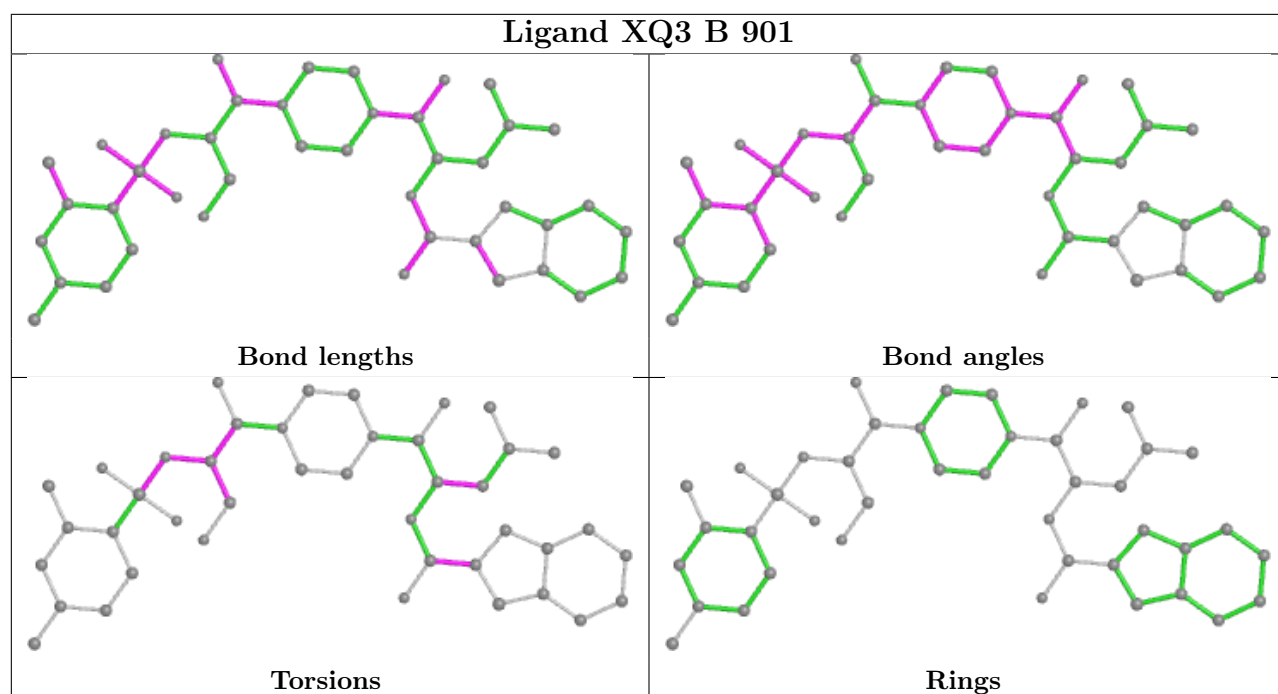
Mol	Chain	Res	Type	Atoms
2	C	901	XQ3	C25-C26-C27-O28
2	C	901	XQ3	N29-C26-C27-O28
2	D	901	XQ3	C25-C26-C27-O28
2	D	901	XQ3	N29-C26-C27-O28
2	C	901	XQ3	C26-N29-S30-O40
2	A	901	XQ3	C26-N29-S30-O40
2	B	901	XQ3	C26-N29-S30-O40
2	D	901	XQ3	C26-N29-S30-O40
2	A	901	XQ3	C25-C26-N29-S30
2	B	901	XQ3	C25-C26-N29-S30
2	C	901	XQ3	C25-C26-N29-S30
2	D	901	XQ3	C25-C26-N29-S30
2	A	901	XQ3	O41-C25-C26-N29
2	B	901	XQ3	O41-C25-C26-N29
2	C	901	XQ3	O41-C25-C26-N29
2	D	901	XQ3	O41-C25-C26-N29

There are no ring outliers.

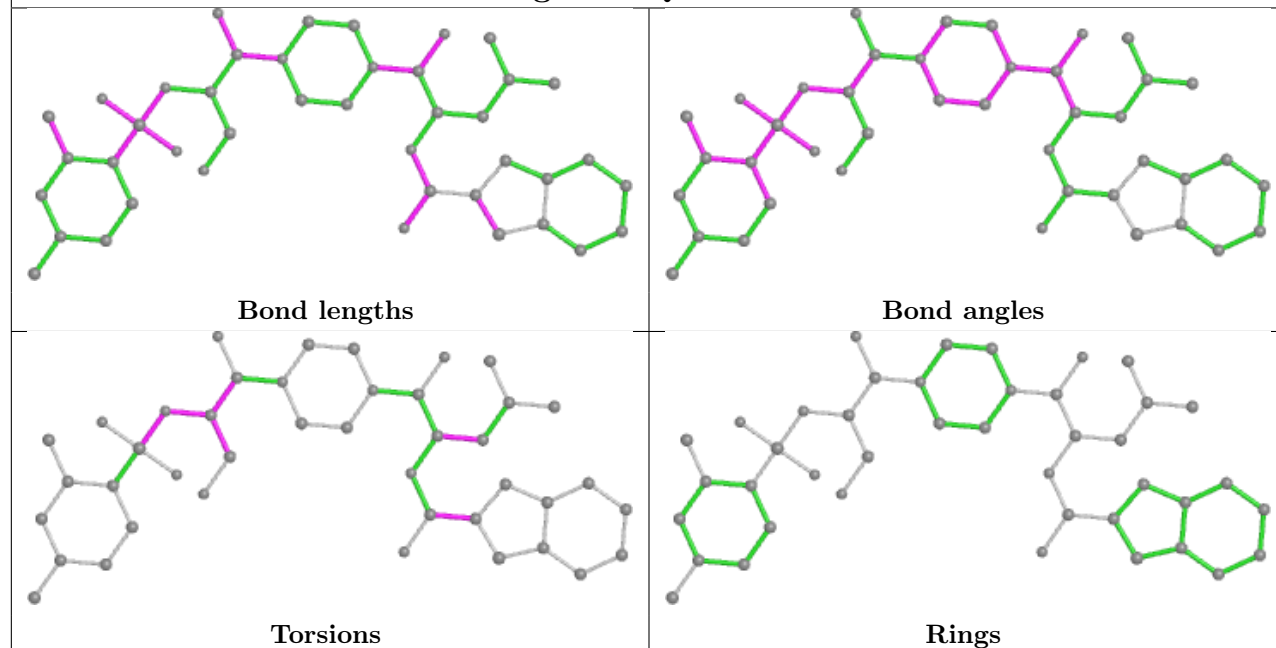
5 monomers are involved in 24 short contacts:

Mol	Chain	Res	Type	Clashes	Symm-Clashes
2	B	901	XQ3	4	0
2	D	901	XQ3	4	0
2	A	901	XQ3	4	0
2	C	901	XQ3	4	0
3	A	902	R2R	8	0

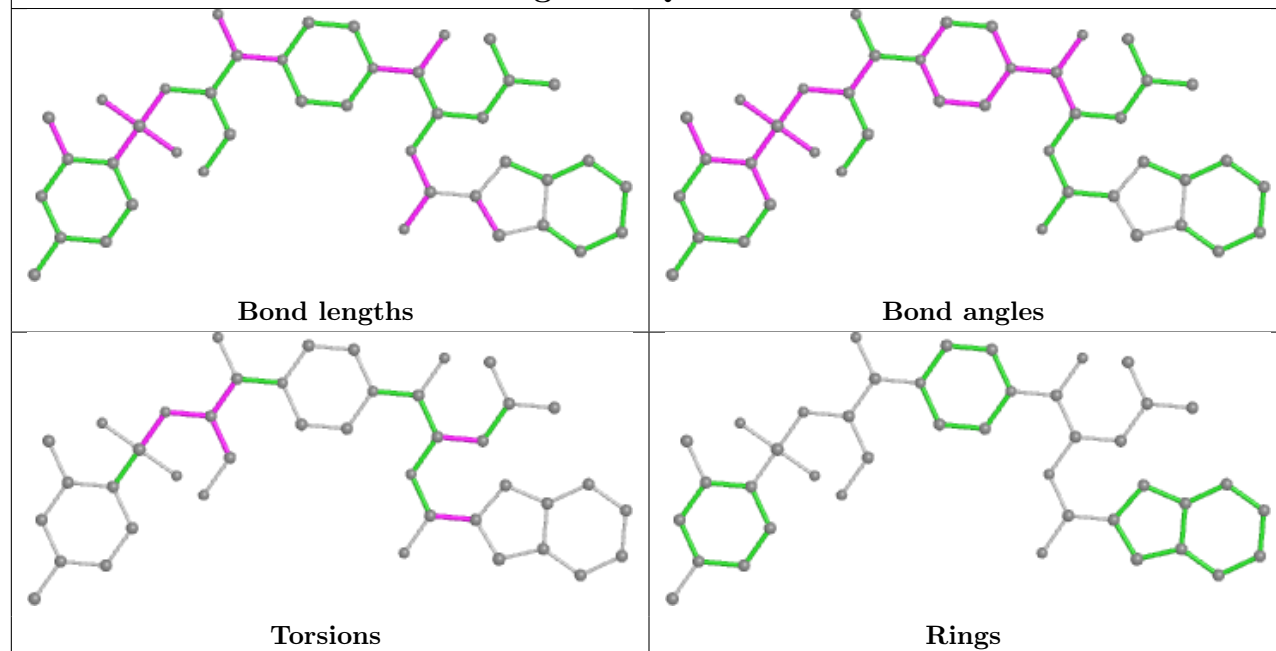
The following is a two-dimensional graphical depiction of Mogul quality analysis of bond lengths, bond angles, torsion angles, and ring geometry for all instances of the Ligand of Interest. In addition, ligands with molecular weight > 250 and outliers as shown on the validation Tables will also be included. For torsion angles, if less than 5% of the Mogul distribution of torsion angles is within 10 degrees of the torsion angle in question, then that torsion angle is considered an outlier. Any bond that is central to one or more torsion angles identified as an outlier by Mogul will be highlighted in the graph. For rings, the root-mean-square deviation (RMSD) between the ring in question and similar rings identified by Mogul is calculated over all ring torsion angles. If the average RMSD is greater than 60 degrees and the minimal RMSD between the ring in question and any Mogul-identified rings is also greater than 60 degrees, then that ring is considered an outlier. The outliers are highlighted in purple. The color gray indicates Mogul did not find sufficient equivalents in the CSD to analyse the geometry.

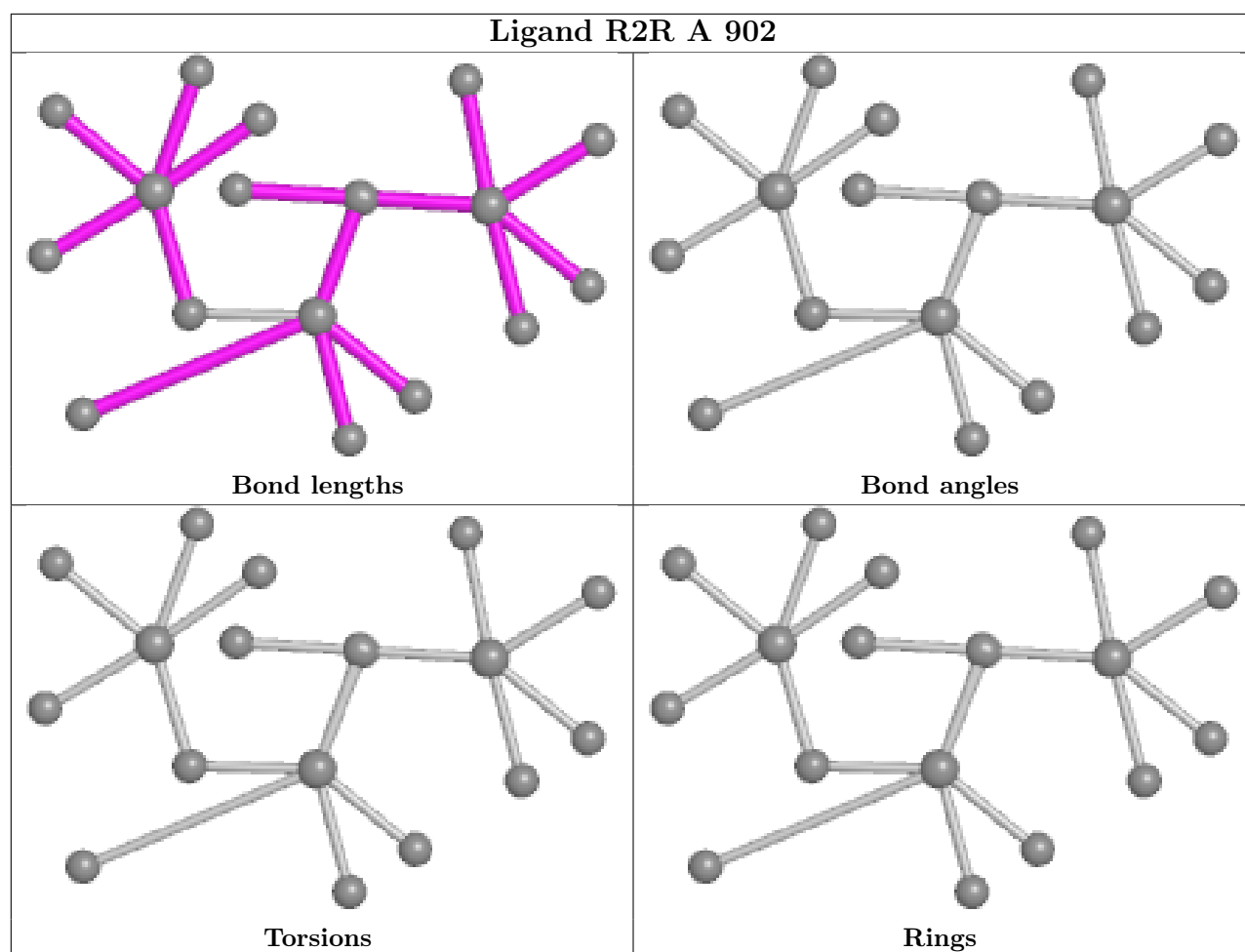


Ligand XQ3 A 901



Ligand XQ3 C 901





5.7 Other polymers [i](#)

There are no such residues in this entry.

5.8 Polymer linkage issues [i](#)

There are no chain breaks in this entry.