



wwPDB X-ray Structure Validation Summary Report ⓘ

Jun 12, 2024 – 08:43 PM EDT

PDB ID : 1E02
Title : Porcine Odorant Binding Protein Complexed with undecanal
Authors : Vincent, F.; Spinelli, S.; Cambillau, C.; Tegoni, M.
Deposited on : 2000-03-09
Resolution : 2.15 Å(reported)

This is a wwPDB X-ray Structure Validation Summary Report for a publicly released PDB entry.

We welcome your comments at validation@mail.wwpdb.org

A user guide is available at

<https://www.wwpdb.org/validation/2017/XrayValidationReportHelp>

with specific help available everywhere you see the ⓘ symbol.

The types of validation reports are described at

<http://www.wwpdb.org/validation/2017/FAQs#types>.

The following versions of software and data (see [references ⓘ](#)) were used in the production of this report:

MolProbity	:	4.02b-467
Mogul	:	1.8.5 (274361), CSD as541be (2020)
Xtriage (Phenix)	:	1.13
EDS	:	2.36.2
Percentile statistics	:	20191225.v01 (using entries in the PDB archive December 25th 2019)
Refmac	:	5.8.0158
CCP4	:	7.0.044 (Gargrove)
Ideal geometry (proteins)	:	Engh & Huber (2001)
Ideal geometry (DNA, RNA)	:	Parkinson et al. (1996)
Validation Pipeline (wwPDB-VP)	:	2.36.2

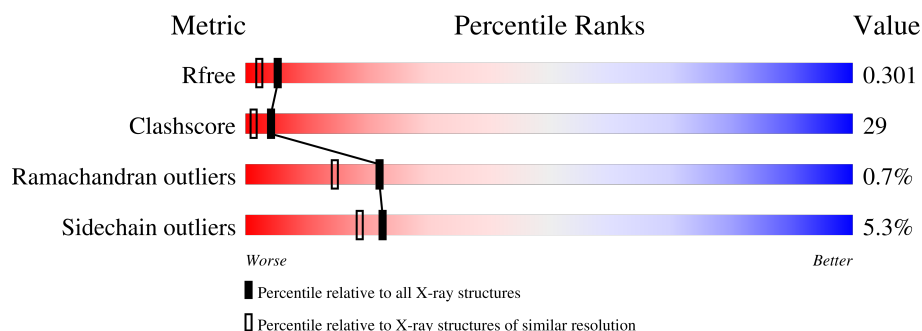
1 Overall quality at a glance

The following experimental techniques were used to determine the structure:

X-RAY DIFFRACTION

The reported resolution of this entry is 2.15 Å.

Percentile scores (ranging between 0-100) for global validation metrics of the entry are shown in the following graphic. The table shows the number of entries on which the scores are based.



Metric	Whole archive (#Entries)	Similar resolution (#Entries, resolution range(Å))
R_{free}	130704	1479 (2.16-2.16)
Clashscore	141614	1585 (2.16-2.16)
Ramachandran outliers	138981	1560 (2.16-2.16)
Sidechain outliers	138945	1559 (2.16-2.16)

The table below summarises the geometric issues observed across the polymeric chains and their fit to the electron density. The red, orange, yellow and green segments of the lower bar indicate the fraction of residues that contain outliers for ≥ 3 , 2, 1 and 0 types of geometric quality criteria respectively. A grey segment represents the fraction of residues that are not modelled. The numeric value for each fraction is indicated below the corresponding segment, with a dot representing fractions $\leq 5\%$.

Mol	Chain	Length	Quality of chain
1	A	157	<div> <div style="width: 64%; background-color: green;"></div> <div style="width: 26%; background-color: yellow;"></div> <div style="width: 5%; background-color: red;"></div> <div style="width: 5%; background-color: grey;"></div> </div> <div>64% 26% • • 5%</div>
1	B	157	<div> <div style="width: 44%; background-color: green;"></div> <div style="width: 42%; background-color: yellow;"></div> <div style="width: 6%; background-color: red;"></div> <div style="width: 6%; background-color: grey;"></div> </div> <div>44% 42% 6% • 6%</div>

The following table lists non-polymeric compounds, carbohydrate monomers and non-standard residues in protein, DNA, RNA chains that are outliers for geometric or electron-density-fit criteria:

Mol	Type	Chain	Res	Chirality	Geometry	Clashes	Electron density
2	UNA	A	600	-	-	X	-
2	UNA	B	600	-	-	X	-

2 Entry composition [i](#)

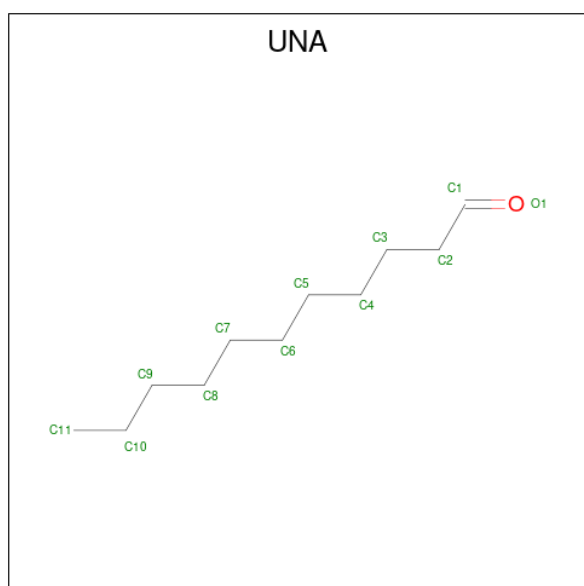
There are 3 unique types of molecules in this entry. The entry contains 2573 atoms, of which 0 are hydrogens and 0 are deuteriums.

In the tables below, the ZeroOcc column contains the number of atoms modelled with zero occupancy, the AltConf column contains the number of residues with at least one atom in alternate conformation and the Trace column contains the number of residues modelled with at most 2 atoms.

- Molecule 1 is a protein called ODORANT-BINDING PROTEIN.

Mol	Chain	Residues	Atoms					ZeroOcc	AltConf	Trace
1	A	149	Total	C	N	O	S	16	3	0
			1186	745	185	250	6			
1	B	147	Total	C	N	O	S	29	0	0
			1161	727	183	247	4			

- Molecule 2 is UNDECANAL (three-letter code: UNA) (formula: $C_{11}H_{22}O$).



Mol	Chain	Residues	Atoms			ZeroOcc	AltConf
2	A	1	Total	C	O	0	0
			12	11	1		
2	B	1	Total	C	O	0	0
			12	11	1		

- Molecule 3 is water.

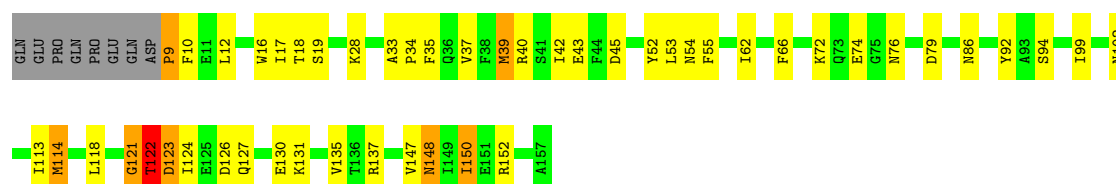
Mol	Chain	Residues	Atoms		ZeroOcc	AltConf
3	A	114	Total 114	O 114	0	0
3	B	88	Total 88	O 88	0	0

3 Residue-property plots

These plots are drawn for all protein, RNA, DNA and oligosaccharide chains in the entry. The first graphic for a chain summarises the proportions of the various outlier classes displayed in the second graphic. The second graphic shows the sequence view annotated by issues in geometry. Residues are color-coded according to the number of geometric quality criteria for which they contain at least one outlier: green = 0, yellow = 1, orange = 2 and red = 3 or more. Stretches of 2 or more consecutive residues without any outlier are shown as a green connector. Residues present in the sample, but not in the model, are shown in grey.

• Molecule 1: ODORANT-BINDING PROTEIN

Chain A: 



• Molecule 1: ODORANT-BINDING PROTEIN

Chain B: 



4 Data and refinement statistics

Property	Value	Source
Space group	P 21 21 21	Depositor
Cell constants a, b, c, α , β , γ	41.78Å 87.91Å 92.51Å 90.00° 90.00° 90.00°	Depositor
Resolution (Å)	18.00 – 2.15 17.93 – 2.15	Depositor EDS
% Data completeness (in resolution range)	90.7 (18.00-2.15) 90.8 (17.93-2.15)	Depositor EDS
R_{merge}	(Not available)	Depositor
R_{sym}	0.05	Depositor
$\langle I/\sigma(I) \rangle$ ¹	6.35 (at 2.15Å)	Xtriage
Refinement program	X-PLOR 3.843	Depositor
R, R_{free}	0.192 , 0.256 0.243 , 0.301	Depositor DCC
R_{free} test set	828 reflections (4.76%)	wwPDB-VP
Wilson B-factor (Å ²)	31.7	Xtriage
Anisotropy	0.008	Xtriage
Bulk solvent k_{sol} (e/Å ³), B_{sol} (Å ²)	0.28 , 60.4	EDS
L-test for twinning ²	$\langle L \rangle = 0.48$, $\langle L^2 \rangle = 0.31$	Xtriage
Estimated twinning fraction	0.032 for -h,l,k	Xtriage
F_o, F_c correlation	0.92	EDS
Total number of atoms	2573	wwPDB-VP
Average B, all atoms (Å ²)	32.0	wwPDB-VP

Xtriage's analysis on translational NCS is as follows: *The largest off-origin peak in the Patterson function is 5.29% of the height of the origin peak. No significant pseudotranslation is detected.*

¹Intensities estimated from amplitudes.

²Theoretical values of $\langle |L| \rangle$, $\langle L^2 \rangle$ for acentric reflections are 0.5, 0.333 respectively for untwinned datasets, and 0.375, 0.2 for perfectly twinned datasets.

5 Model quality

5.1 Standard geometry

Bond lengths and bond angles in the following residue types are not validated in this section: UNA

The Z score for a bond length (or angle) is the number of standard deviations the observed value is removed from the expected value. A bond length (or angle) with $|Z| > 5$ is considered an outlier worth inspection. RMSZ is the root-mean-square of all Z scores of the bond lengths (or angles).

Mol	Chain	Bond lengths		Bond angles	
		RMSZ	# $ Z > 5$	RMSZ	# $ Z > 5$
1	A	0.63	2/1220 (0.2%)	0.79	5/1641 (0.3%)
1	B	2.40	63/1178 (5.3%)	1.32	6/1586 (0.4%)
All	All	1.74	65/2398 (2.7%)	1.08	11/3227 (0.3%)

Chiral center outliers are detected by calculating the chiral volume of a chiral center and verifying if the center is modelled as a planar moiety or with the opposite hand. A planarity outlier is detected by checking planarity of atoms in a peptide group, atoms in a mainchain group or atoms of a sidechain that are expected to be planar.

Mol	Chain	#Chirality outliers	#Planarity outliers
1	B	0	1

The worst 5 of 65 bond length outliers are listed below:

Mol	Chain	Res	Type	Atoms	Z	Observed(Å)	Ideal(Å)
1	A	121	GLY	C-N	-15.03	0.99	1.34
1	B	16	TRP	CD2-CE2	-9.96	1.29	1.41
1	B	107	GLU	CD-OE2	9.74	1.36	1.25
1	B	65	GLU	CG-CD	-9.63	1.37	1.51
1	B	92	TYR	CG-CD1	9.32	1.51	1.39

The worst 5 of 11 bond angle outliers are listed below:

Mol	Chain	Res	Type	Atoms	Z	Observed(°)	Ideal(°)
1	B	121	GLY	C-N-CA	9.31	144.97	121.70
1	B	122	THR	O-C-N	8.75	136.70	122.70
1	A	122	THR	O-C-N	8.03	135.55	122.70
1	B	122	THR	CA-C-N	-7.46	100.78	117.20
1	A	123	ASP	N-CA-CB	-6.62	98.69	110.60

There are no chirality outliers.

All (1) planarity outliers are listed below:

Mol	Chain	Res	Type	Group
1	B	120	LYS	Peptide

5.2 Too-close contacts ⓘ

In the following table, the Non-H and H(model) columns list the number of non-hydrogen atoms and hydrogen atoms in the chain respectively. The H(added) column lists the number of hydrogen atoms added and optimized by MolProbity. The Clashes column lists the number of clashes within the asymmetric unit, whereas Symm-Clashes lists symmetry-related clashes.

Mol	Chain	Non-H	H(model)	H(added)	Clashes	Symm-Clashes
1	A	1186	0	1132	73	0
1	B	1161	0	1102	52	0
2	A	12	0	22	33	0
2	B	12	0	22	15	0
3	A	114	0	0	3	0
3	B	88	0	0	15	0
All	All	2573	0	2278	134	0

The all-atom clashscore is defined as the number of clashes found per 1000 atoms (including hydrogen atoms). The all-atom clashscore for this structure is 29.

The worst 5 of 134 close contacts within the same asymmetric unit are listed below, sorted by their clash magnitude.

Atom-1	Atom-2	Interatomic distance (Å)	Clash overlap (Å)
1:A:39[B]:MET:CE	2:A:600:UNA:H62	1.32	1.52
1:B:122:THR:CG2	1:B:123:ASP:N	1.81	1.30
1:B:122:THR:HG23	1:B:123:ASP:CA	1.66	1.25
1:A:39[B]:MET:CE	2:A:600:UNA:C6	2.28	1.11
1:A:122:THR:CG2	1:A:123:ASP:N	2.05	1.11

There are no symmetry-related clashes.

5.3 Torsion angles

5.3.1 Protein backbone

In the following table, the Percentiles column shows the percent Ramachandran outliers of the chain as a percentile score with respect to all X-ray entries followed by that with respect to entries of similar resolution.

The Analysed column shows the number of residues for which the backbone conformation was analysed, and the total number of residues.

Mol	Chain	Analysed	Favoured	Allowed	Outliers	Percentiles	
1	A	150/157 (96%)	145 (97%)	5 (3%)	0	100	100
1	B	145/157 (92%)	129 (89%)	14 (10%)	2 (1%)	11	5
All	All	295/314 (94%)	274 (93%)	19 (6%)	2 (1%)	22	15

All (2) Ramachandran outliers are listed below:

Mol	Chain	Res	Type
1	B	122	THR
1	B	121	GLY

5.3.2 Protein sidechains

In the following table, the Percentiles column shows the percent sidechain outliers of the chain as a percentile score with respect to all X-ray entries followed by that with respect to entries of similar resolution.

The Analysed column shows the number of residues for which the sidechain conformation was analysed, and the total number of residues.

Mol	Chain	Analysed	Rotameric	Outliers	Percentiles	
1	A	135/140 (96%)	126 (93%)	9 (7%)	16	11
1	B	130/140 (93%)	124 (95%)	6 (5%)	27	23
All	All	265/280 (95%)	250 (94%)	15 (6%)	22	16

5 of 15 residues with a non-rotameric sidechain are listed below:

Mol	Chain	Res	Type
1	A	148	ASN
1	B	122	THR
1	A	150	ILE
1	B	152	ARG

Continued on next page...

Continued from previous page...

Mol	Chain	Res	Type
1	B	73	GLN

Sometimes sidechains can be flipped to improve hydrogen bonding and reduce clashes. 5 of 8 such sidechains are listed below:

Mol	Chain	Res	Type
1	B	145	ASN
1	B	86	ASN
1	B	73	GLN
1	A	148	ASN
1	B	85	ASN

5.3.3 RNA [i](#)

There are no RNA molecules in this entry.

5.4 Non-standard residues in protein, DNA, RNA chains [i](#)

There are no non-standard protein/DNA/RNA residues in this entry.

5.5 Carbohydrates [i](#)

There are no monosaccharides in this entry.

5.6 Ligand geometry [i](#)

2 ligands are modelled in this entry.

In the following table, the Counts columns list the number of bonds (or angles) for which Mogul statistics could be retrieved, the number of bonds (or angles) that are observed in the model and the number of bonds (or angles) that are defined in the Chemical Component Dictionary. The Link column lists molecule types, if any, to which the group is linked. The Z score for a bond length (or angle) is the number of standard deviations the observed value is removed from the expected value. A bond length (or angle) with $|Z| > 2$ is considered an outlier worth inspection. RMSZ is the root-mean-square of all Z scores of the bond lengths (or angles).

Mol	Type	Chain	Res	Link	Bond lengths			Bond angles		
					Counts	RMSZ	$\# Z > 2$	Counts	RMSZ	$\# Z > 2$
2	UNA	A	600	-	11,11,11	1.16	2 (18%)	10,10,10	1.39	1 (10%)
2	UNA	B	600	-	11,11,11	1.74	1 (9%)	10,10,10	0.69	0

In the following table, the Chirals column lists the number of chiral outliers, the number of chiral centers analysed, the number of these observed in the model and the number defined in the Chemical Component Dictionary. Similar counts are reported in the Torsion and Rings columns. '-' means no outliers of that kind were identified.

Mol	Type	Chain	Res	Link	Chirals	Torsions	Rings
2	UNA	A	600	-	-	7/8/9/9	-
2	UNA	B	600	-	-	7/8/9/9	-

All (3) bond length outliers are listed below:

Mol	Chain	Res	Type	Atoms	Z	Observed(Å)	Ideal(Å)
2	B	600	UNA	O1-C1	5.23	1.49	1.19
2	A	600	UNA	C7-C8	2.35	1.64	1.51
2	A	600	UNA	C3-C2	2.26	1.61	1.52

All (1) bond angle outliers are listed below:

Mol	Chain	Res	Type	Atoms	Z	Observed(°)	Ideal(°)
2	A	600	UNA	O1-C1-C2	-3.72	102.48	126.89

There are no chirality outliers.

5 of 14 torsion outliers are listed below:

Mol	Chain	Res	Type	Atoms
2	B	600	UNA	C6-C7-C8-C9
2	A	600	UNA	C5-C6-C7-C8
2	A	600	UNA	C11-C10-C9-C8
2	B	600	UNA	C7-C8-C9-C10
2	B	600	UNA	C2-C3-C4-C5

There are no ring outliers.

2 monomers are involved in 48 short contacts:

Mol	Chain	Res	Type	Clashes	Symm-Clashes
2	A	600	UNA	33	0
2	B	600	UNA	15	0

5.7 Other polymers

There are no such residues in this entry.

5.8 Polymer linkage issues

The following chains have linkage breaks:

Mol	Chain	Number of breaks
1	B	3
1	A	1

All chain breaks are listed below:

Model	Chain	Residue-1	Atom-1	Residue-2	Atom-2	Distance (Å)
1	B	122:THR	C	123:ASP	N	1.20
1	B	11:GLU	C	12:LEU	N	1.19
1	B	121:GLY	C	122:THR	N	1.15
1	A	121:GLY	C	122:THR	N	0.99

6 Fit of model and data [i](#)

6.1 Protein, DNA and RNA chains [i](#)

Unable to reproduce the depositors R factor - this section is therefore empty.

6.2 Non-standard residues in protein, DNA, RNA chains [i](#)

Unable to reproduce the depositors R factor - this section is therefore empty.

6.3 Carbohydrates [i](#)

Unable to reproduce the depositors R factor - this section is therefore empty.

6.4 Ligands [i](#)

Unable to reproduce the depositors R factor - this section is therefore empty.

6.5 Other polymers [i](#)

Unable to reproduce the depositors R factor - this section is therefore empty.