



# Full wwPDB X-ray Structure Validation Report ⓘ

May 20, 2024 – 08:13 PM JST

PDB ID : 6AEK  
Title : Crystal structure of ENPP1 in complex with pApG  
Authors : Kato, K.; Nishimasu, H.; Hirano, S.; Hirano, H.; Ishitani, R.; Nureki, O.  
Deposited on : 2018-08-05  
Resolution : 1.80 Å(reported)

This is a Full wwPDB X-ray Structure Validation Report for a publicly released PDB entry.

We welcome your comments at [validation@mail.wwpdb.org](mailto:validation@mail.wwpdb.org)

A user guide is available at

<https://www.wwpdb.org/validation/2017/XrayValidationReportHelp>

with specific help available everywhere you see the ⓘ symbol.

The types of validation reports are described at

<http://www.wwpdb.org/validation/2017/FAQs#types>.

---

The following versions of software and data (see [references ⓘ](#)) were used in the production of this report:

MolProbity : 4.02b-467  
Mogul : 1.8.5 (274361), CSD as541be (2020)  
Xtriage (Phenix) : 1.13  
EDS : 2.36.2  
buster-report : 1.1.7 (2018)  
Percentile statistics : 20191225.v01 (using entries in the PDB archive December 25th 2019)  
Refmac : 5.8.0158  
CCP4 : 7.0.044 (Gargrove)  
Ideal geometry (proteins) : Engh & Huber (2001)  
Ideal geometry (DNA, RNA) : Parkinson et al. (1996)  
Validation Pipeline (wwPDB-VP) : 2.36.2

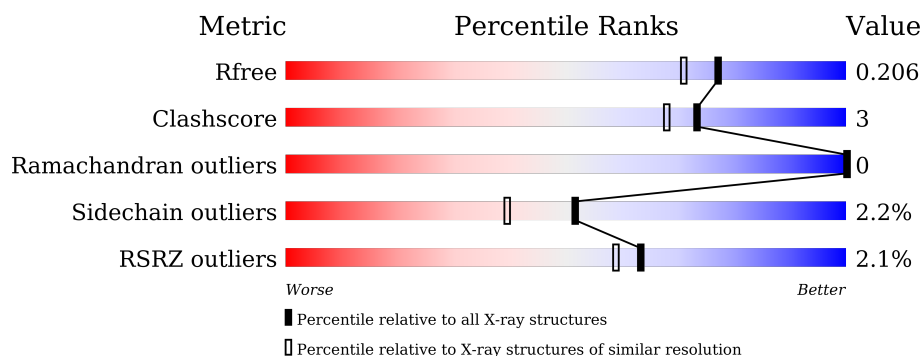
# 1 Overall quality at a glance

The following experimental techniques were used to determine the structure:

*X-RAY DIFFRACTION*

The reported resolution of this entry is 1.80 Å.

Percentile scores (ranging between 0-100) for global validation metrics of the entry are shown in the following graphic. The table shows the number of entries on which the scores are based.



Metric	Whole archive (#Entries)	Similar resolution (#Entries, resolution range(Å))
$R_{free}$	130704	5950 (1.80-1.80)
Clashscore	141614	6793 (1.80-1.80)
Ramachandran outliers	138981	6697 (1.80-1.80)
Sidechain outliers	138945	6696 (1.80-1.80)
RSRZ outliers	127900	5850 (1.80-1.80)

The table below summarises the geometric issues observed across the polymeric chains and their fit to the electron density. The red, orange, yellow and green segments of the lower bar indicate the fraction of residues that contain outliers for  $\geq 3$ , 2, 1 and 0 types of geometric quality criteria respectively. A grey segment represents the fraction of residues that are not modelled. The numeric value for each fraction is indicated below the corresponding segment, with a dot representing fractions  $\leq 5\%$ . The upper red bar (where present) indicates the fraction of residues that have poor fit to the electron density. The numeric value is given above the bar.

Mol	Chain	Length	Quality of chain
1	A	738	<div> <div>2%</div> <div> <div></div> <div>90%</div> <div>9%</div> </div> </div>
2	B	3	<div> <div>33%</div> <div>67%</div> </div>

## 2 Entry composition

There are 10 unique types of molecules in this entry. The entry contains 6299 atoms, of which 0 are hydrogens and 0 are deuteriums.

In the tables below, the ZeroOcc column contains the number of atoms modelled with zero occupancy, the AltConf column contains the number of residues with at least one atom in alternate conformation and the Trace column contains the number of residues modelled with at most 2 atoms.

- Molecule 1 is a protein called Ectonucleotide pyrophosphatase/phosphodiesterase 1, isoform CRA\_d.

Mol	Chain	Residues	Atoms					ZeroOcc	AltConf	Trace
			Total	C	N	O	S			
1	A	726	5817	3741	968	1080	28	0	2	0

There are 3 discrepancies between the modelled and reference sequences:

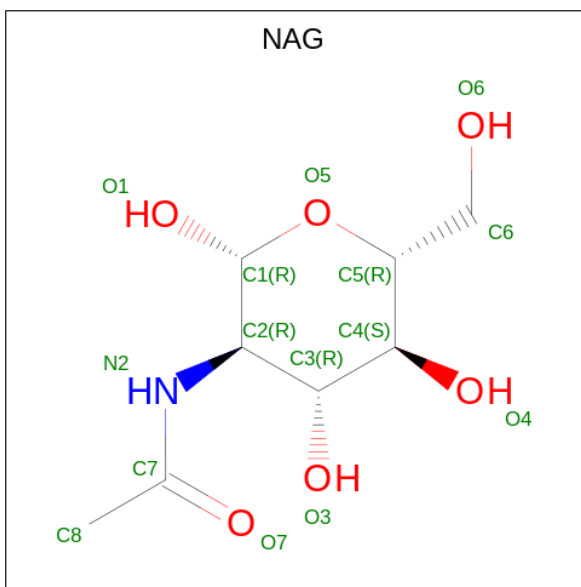
Chain	Residue	Modelled	Actual	Comment	Reference
A	168	GLY	-	See sequence details	UNP G3X9S2
A	169	PRO	-	See sequence details	UNP G3X9S2
A	238	ALA	THR	engineered mutation	UNP G3X9S2

- Molecule 2 is an oligosaccharide called alpha-D-mannopyranose-(1-4)-2-acetamido-2-deoxy-beta-D-glucopyranose-(1-4)-2-acetamido-2-deoxy-beta-D-glucopyranose.



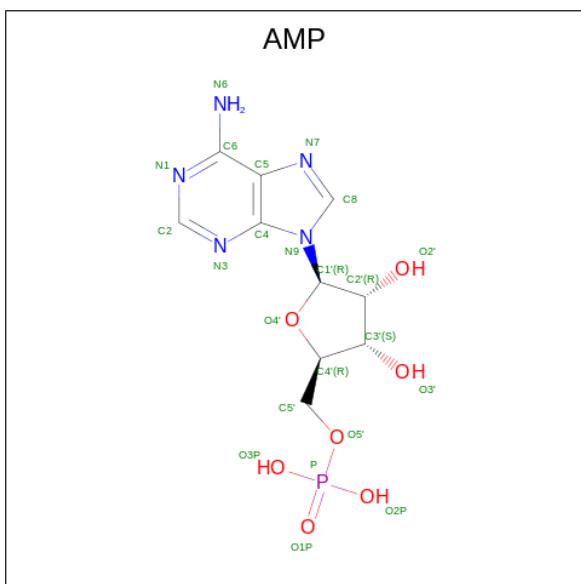
Mol	Chain	Residues	Atoms				ZeroOcc	AltConf	Trace
			Total	C	N	O			
2	B	3	39	22	2	15	0	0	0

- Molecule 3 is 2-acetamido-2-deoxy-beta-D-glucopyranose (three-letter code: NAG) (formula: C<sub>8</sub>H<sub>15</sub>NO<sub>6</sub>).



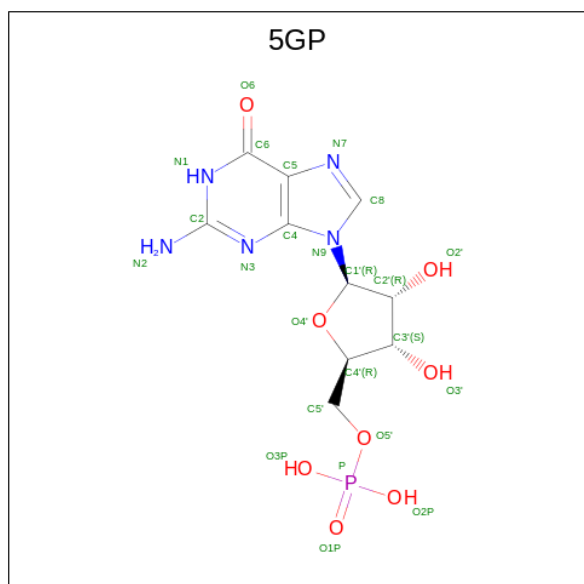
Mol	Chain	Residues	Atoms				ZeroOcc	AltConf
3	A	1	Total	C	N	O	0	0
			14	8	1	5		
3	A	1	Total	C	N	O	0	0
			14	8	1	5		
3	A	1	Total	C	N	O	0	0
			14	8	1	5		

- Molecule 4 is ADENOSINE MONOPHOSPHATE (three-letter code: AMP) (formula:  $C_{10}H_{14}N_5O_7P$ ) (labeled as "Ligand of Interest" by depositor).



Mol	Chain	Residues	Atoms					ZeroOcc	AltConf
4	A	1	Total	C	N	O	P	0	0
			23	10	5	7	1		

- Molecule 5 is GUANOSINE-5'-MONOPHOSPHATE (three-letter code: 5GP) (formula:  $C_{10}H_{14}N_5O_8P$ ) (labeled as "Ligand of Interest" by depositor).



Mol	Chain	Residues	Atoms					ZeroOcc	AltConf
5	A	1	Total	C	N	O	P	0	0
			23	10	5	7	1		

- Molecule 6 is ZINC ION (three-letter code: ZN) (formula: Zn).

Mol	Chain	Residues	Atoms		ZeroOcc	AltConf
6	A	2	Total	Zn	0	0
			2	2		

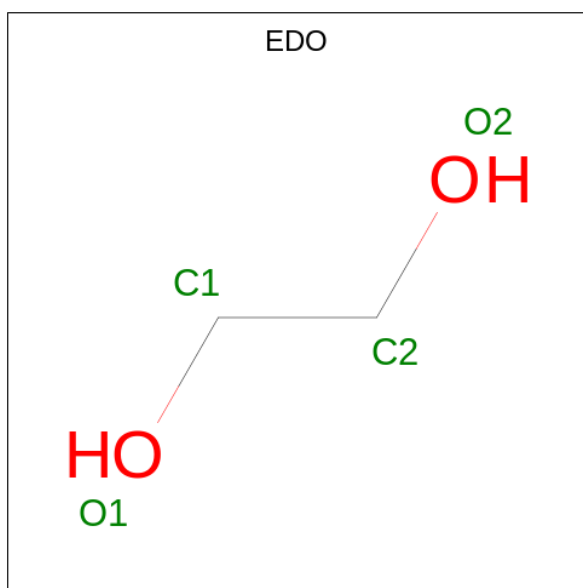
- Molecule 7 is CALCIUM ION (three-letter code: CA) (formula: Ca).

Mol	Chain	Residues	Atoms		ZeroOcc	AltConf
7	A	1	Total	Ca	0	0
			1	1		

- Molecule 8 is CHLORIDE ION (three-letter code: CL) (formula: Cl).

Mol	Chain	Residues	Atoms		ZeroOcc	AltConf
8	A	6	Total	Cl	0	0
			6	6		

- Molecule 9 is 1,2-ETHANEDIOL (three-letter code: EDO) (formula: C<sub>2</sub>H<sub>6</sub>O<sub>2</sub>).



Mol	Chain	Residues	Atoms			ZeroOcc	AltConf
9	A	1	Total	C	O	0	0
			4	2	2		
9	A	1	Total	C	O	0	0
			4	2	2		
9	A	1	Total	C	O	0	0
			4	2	2		
9	A	1	Total	C	O	0	0
			4	2	2		
9	A	1	Total	C	O	0	0
			4	2	2		
9	A	1	Total	C	O	0	0
			4	2	2		

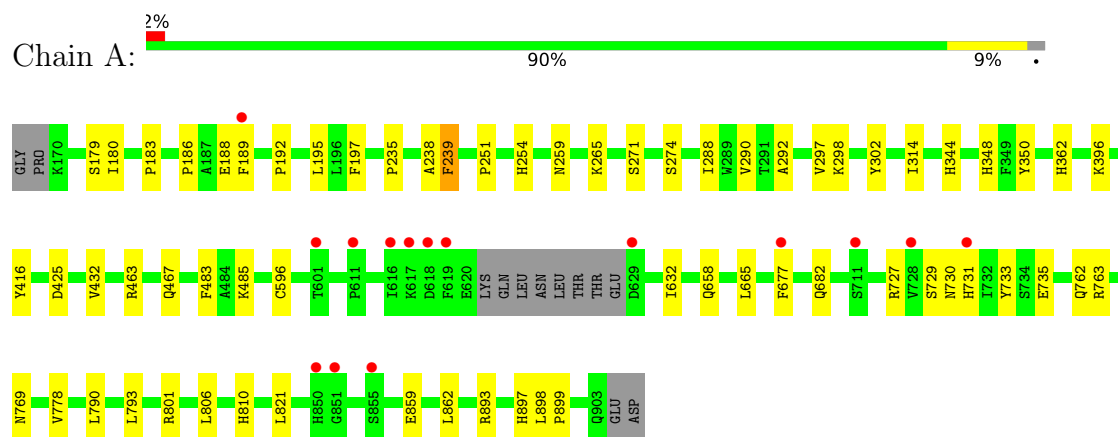
- Molecule 10 is water.

Mol	Chain	Residues	Atoms		ZeroOcc	AltConf
10	A	322	Total	O	0	0
			322	322		

### 3 Residue-property plots [i](#)

These plots are drawn for all protein, RNA, DNA and oligosaccharide chains in the entry. The first graphic for a chain summarises the proportions of the various outlier classes displayed in the second graphic. The second graphic shows the sequence view annotated by issues in geometry and electron density. Residues are color-coded according to the number of geometric quality criteria for which they contain at least one outlier: green = 0, yellow = 1, orange = 2 and red = 3 or more. A red dot above a residue indicates a poor fit to the electron density ( $RSRZ > 2$ ). Stretches of 2 or more consecutive residues without any outlier are shown as a green connector. Residues present in the sample, but not in the model, are shown in grey.

- Molecule 1: Ectonucleotide pyrophosphatase/phosphodiesterase 1, isoform CRA\_d



- Molecule 2: alpha-D-mannopyranose-(1-4)-2-acetamido-2-deoxy-beta-D-glucopyranose-(1-4)-2-acetamido-2-deoxy-beta-D-glucopyranose



## 4 Data and refinement statistics

Property	Value	Source
Space group	P 1 21 1	Depositor
Cell constants a, b, c, $\alpha$ , $\beta$ , $\gamma$	54.49Å 94.07Å 74.68Å 90.00° 96.86° 90.00°	Depositor
Resolution (Å)	47.00 – 1.80 47.04 – 1.80	Depositor EDS
% Data completeness (in resolution range)	99.9 (47.00-1.80) 100.0 (47.04-1.80)	Depositor EDS
$R_{merge}$	0.05	Depositor
$R_{sym}$	(Not available)	Depositor
$\langle I/\sigma(I) \rangle$ <sup>1</sup>	1.97 (at 1.79Å)	Xtriage
Refinement program	PHENIX (1.13_2998: ???)	Depositor
R, $R_{free}$	0.183 , 0.208 0.181 , 0.206	Depositor DCC
$R_{free}$ test set	3433 reflections (4.96%)	wwPDB-VP
Wilson B-factor (Å <sup>2</sup> )	27.4	Xtriage
Anisotropy	0.807	Xtriage
Bulk solvent $k_{sol}$ (e/Å <sup>3</sup> ), $B_{sol}$ (Å <sup>2</sup> )	0.34 , 47.1	EDS
L-test for twinning <sup>2</sup>	$\langle  L  \rangle = 0.50$ , $\langle L^2 \rangle = 0.33$	Xtriage
Estimated twinning fraction	No twinning to report.	Xtriage
$F_o, F_c$ correlation	0.97	EDS
Total number of atoms	6299	wwPDB-VP
Average B, all atoms (Å <sup>2</sup> )	41.0	wwPDB-VP

Xtriage's analysis on translational NCS is as follows: *The largest off-origin peak in the Patterson function is 5.63% of the height of the origin peak. No significant pseudotranslation is detected.*

<sup>1</sup>Intensities estimated from amplitudes.

<sup>2</sup>Theoretical values of  $\langle |L| \rangle$ ,  $\langle L^2 \rangle$  for acentric reflections are 0.5, 0.333 respectively for untwinned datasets, and 0.375, 0.2 for perfectly twinned datasets.



## 5 Model quality

### 5.1 Standard geometry

Bond lengths and bond angles in the following residue types are not validated in this section: CL, CA, ZN, AMP, NAG, EDO, 5GP, MAN

The Z score for a bond length (or angle) is the number of standard deviations the observed value is removed from the expected value. A bond length (or angle) with  $|Z| > 5$  is considered an outlier worth inspection. RMSZ is the root-mean-square of all Z scores of the bond lengths (or angles).

Mol	Chain	Bond lengths		Bond angles	
		RMSZ	$\# Z  > 5$	RMSZ	$\# Z  > 5$
1	A	0.36	0/5996	0.53	0/8170

There are no bond length outliers.

There are no bond angle outliers.

There are no chirality outliers.

There are no planarity outliers.

### 5.2 Too-close contacts

In the following table, the Non-H and H(model) columns list the number of non-hydrogen atoms and hydrogen atoms in the chain respectively. The H(added) column lists the number of hydrogen atoms added and optimized by MolProbity. The Clashes column lists the number of clashes within the asymmetric unit, whereas Symm-Clashes lists symmetry-related clashes.

Mol	Chain	Non-H	H(model)	H(added)	Clashes	Symm-Clashes
1	A	5817	0	5578	36	0
2	B	39	0	34	1	0
3	A	42	0	39	0	0
4	A	23	0	11	2	0
5	A	23	0	12	2	0
6	A	2	0	0	0	0
7	A	1	0	0	0	0
8	A	6	0	0	1	0
9	A	24	0	36	4	0
10	A	322	0	0	4	0
All	All	6299	0	5710	39	0

The all-atom clashscore is defined as the number of clashes found per 1000 atoms (including hydrogen atoms). The all-atom clashscore for this structure is 3.

All (39) close contacts within the same asymmetric unit are listed below, sorted by their clash magnitude.

Atom-1	Atom-2	Interatomic distance (Å)	Clash overlap (Å)
8:A:1012:CL:CL	9:A:1021:EDO:O1	2.41	0.75
1:A:898:LEU:HD12	1:A:899:PRO:HD2	1.73	0.71
9:A:1022:EDO:H21	2:B:2:NAG:H3	1.74	0.70
1:A:658:GLN:OE1	1:A:727:ARG:NH2	2.30	0.64
1:A:769:ASN:OD1	10:A:1101:HOH:O	2.15	0.64
1:A:180:ILE:HG12	1:A:396:LYS:HD3	1.84	0.59
1:A:432:VAL:HA	9:A:1021:EDO:H21	1.85	0.57
1:A:658:GLN:HB3	1:A:727:ARG:NH2	2.20	0.55
1:A:188:GLU:OE1	1:A:188:GLU:N	2.32	0.54
1:A:733:TYR:CZ	1:A:735:GLU:HB2	2.44	0.53
1:A:763:ARG:NH1	1:A:859:GLU:OE2	2.41	0.53
1:A:348:HIS:ND1	10:A:1105:HOH:O	2.34	0.52
1:A:251:PRO:HA	1:A:254:HIS:CE1	2.46	0.51
1:A:432:VAL:HG13	9:A:1021:EDO:H22	1.92	0.50
1:A:362:HIS:HB3	5:A:1008:5GP:O6	2.12	0.50
1:A:195:LEU:HD23	1:A:350:TYR:HB2	1.94	0.49
1:A:893:ARG:HD2	10:A:1316:HOH:O	2.14	0.47
1:A:235:PRO:HD3	1:A:483:PHE:CE1	2.50	0.46
1:A:186:PRO:HG2	1:A:189:PHE:CD1	2.50	0.46
1:A:769:ASN:ND2	1:A:821:LEU:O	2.47	0.46
1:A:793:LEU:HD22	1:A:806:LEU:HD21	1.98	0.46
1:A:292:ALA:HB1	1:A:297:VAL:HB	1.98	0.45
1:A:778:VAL:HB	1:A:810:HIS:HB2	1.99	0.44
1:A:298:LYS:HE3	1:A:344:HIS:O	2.17	0.43
1:A:195:LEU:HD23	1:A:350:TYR:CB	2.48	0.43
1:A:463:ARG:N	1:A:467:GLN:OE1	2.48	0.43
1:A:897:HIS:ND1	10:A:1107:HOH:O	2.36	0.43
1:A:485:LYS:HD2	1:A:485:LYS:HA	1.65	0.43
1:A:183:PRO:HB3	1:A:192:PRO:HG3	2.01	0.43
1:A:677:PHE:HZ	1:A:762:GLN:HG2	1.82	0.43
1:A:238:ALA:HB2	4:A:1007:AMP:P	2.59	0.42
1:A:596:CYS:SG	1:A:665:LEU:HD21	2.60	0.42
1:A:632:ILE:HD13	1:A:632:ILE:HA	1.87	0.42
5:A:1008:5GP:H8	5:A:1008:5GP:O5'	2.20	0.41
1:A:239:PHE:HB2	1:A:259:ASN:OD1	2.21	0.41
1:A:729:SER:HB3	1:A:731:HIS:CE1	2.55	0.41
1:A:238:ALA:HB2	4:A:1007:AMP:O2P	2.20	0.41
1:A:290:VAL:HG13	1:A:314:ILE:HD12	2.02	0.41
1:A:265:LYS:HE2	1:A:265:LYS:HB2	1.82	0.40

There are no symmetry-related clashes.

### 5.3 Torsion angles [i](#)

#### 5.3.1 Protein backbone [i](#)

In the following table, the Percentiles column shows the percent Ramachandran outliers of the chain as a percentile score with respect to all X-ray entries followed by that with respect to entries of similar resolution.

The Analysed column shows the number of residues for which the backbone conformation was analysed, and the total number of residues.

Mol	Chain	Analysed	Favoured	Allowed	Outliers	Percentiles	
1	A	724/738 (98%)	701 (97%)	23 (3%)	0	100	100

There are no Ramachandran outliers to report.

#### 5.3.2 Protein sidechains [i](#)

In the following table, the Percentiles column shows the percent sidechain outliers of the chain as a percentile score with respect to all X-ray entries followed by that with respect to entries of similar resolution.

The Analysed column shows the number of residues for which the sidechain conformation was analysed, and the total number of residues.

Mol	Chain	Analysed	Rotameric	Outliers	Percentiles	
1	A	647/675 (96%)	633 (98%)	14 (2%)	52	39

All (14) residues with a non-rotameric sidechain are listed below:

Mol	Chain	Res	Type
1	A	179	SER
1	A	197	PHE
1	A	239	PHE
1	A	271	SER
1	A	274	SER
1	A	288	ILE
1	A	302	TYR
1	A	416	TYR
1	A	425	ASP
1	A	682	GLN

*Continued on next page...*

*Continued from previous page...*

Mol	Chain	Res	Type
1	A	730	ASN
1	A	790	LEU
1	A	801	ARG
1	A	862	LEU

Sometimes sidechains can be flipped to improve hydrogen bonding and reduce clashes. All (4) such sidechains are listed below:

Mol	Chain	Res	Type
1	A	466	ASN
1	A	583	ASN
1	A	731	HIS
1	A	820	GLN

### 5.3.3 RNA ⓘ

There are no RNA molecules in this entry.

## 5.4 Non-standard residues in protein, DNA, RNA chains ⓘ

There are no non-standard protein/DNA/RNA residues in this entry.

## 5.5 Carbohydrates ⓘ

3 monosaccharides are modelled in this entry.

In the following table, the Counts columns list the number of bonds (or angles) for which Mogul statistics could be retrieved, the number of bonds (or angles) that are observed in the model and the number of bonds (or angles) that are defined in the Chemical Component Dictionary. The Link column lists molecule types, if any, to which the group is linked. The Z score for a bond length (or angle) is the number of standard deviations the observed value is removed from the expected value. A bond length (or angle) with  $|Z| > 2$  is considered an outlier worth inspection. RMSZ is the root-mean-square of all Z scores of the bond lengths (or angles).

Mol	Type	Chain	Res	Link	Bond lengths			Bond angles		
					Counts	RMSZ	$\# Z  > 2$	Counts	RMSZ	$\# Z  > 2$
2	NAG	B	1	2,1	14,14,15	0.24	0	17,19,21	0.67	0
2	NAG	B	2	2	14,14,15	0.53	0	17,19,21	0.74	0
2	MAN	B	3	2	11,11,12	1.29	2 (18%)	15,15,17	1.15	1 (6%)

In the following table, the Chirals column lists the number of chiral outliers, the number of chiral

centers analysed, the number of these observed in the model and the number defined in the Chemical Component Dictionary. Similar counts are reported in the Torsion and Rings columns. '-' means no outliers of that kind were identified.

Mol	Type	Chain	Res	Link	Chirals	Torsions	Rings
2	NAG	B	1	2,1	-	0/6/23/26	0/1/1/1
2	NAG	B	2	2	-	0/6/23/26	0/1/1/1
2	MAN	B	3	2	-	0/2/19/22	1/1/1/1

All (2) bond length outliers are listed below:

Mol	Chain	Res	Type	Atoms	Z	Observed(Å)	Ideal(Å)
2	B	3	MAN	C1-C2	2.86	1.58	1.52
2	B	3	MAN	O5-C5	2.30	1.48	1.43

All (1) bond angle outliers are listed below:

Mol	Chain	Res	Type	Atoms	Z	Observed(°)	Ideal(°)
2	B	3	MAN	C1-O5-C5	2.80	115.98	112.19

There are no chirality outliers.

There are no torsion outliers.

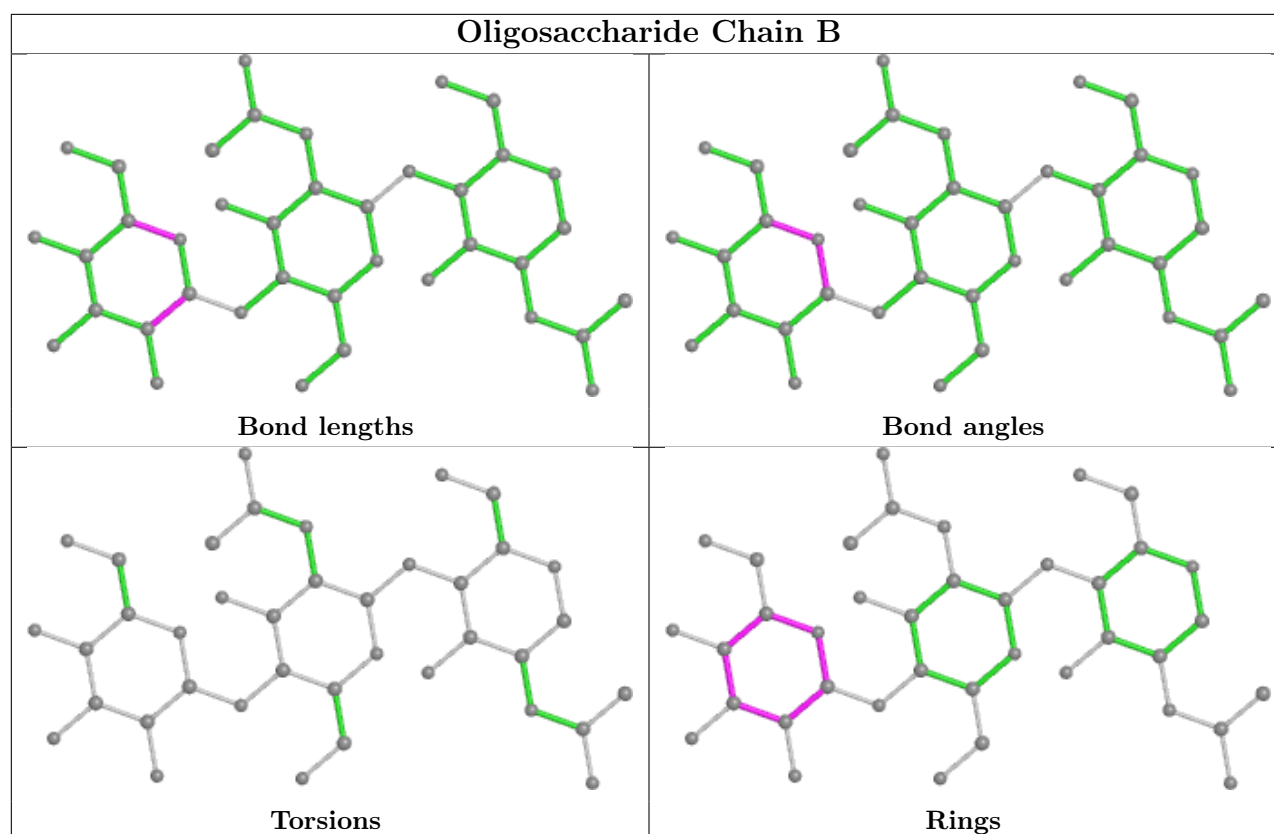
All (1) ring outliers are listed below:

Mol	Chain	Res	Type	Atoms
2	B	3	MAN	C1-C2-C3-C4-C5-O5

1 monomer is involved in 1 short contact:

Mol	Chain	Res	Type	Clashes	Symm-Clashes
2	B	2	NAG	1	0

The following is a two-dimensional graphical depiction of Mogul quality analysis of bond lengths, bond angles, torsion angles, and ring geometry for oligosaccharide.



## 5.6 Ligand geometry [i](#)

Of 20 ligands modelled in this entry, 9 are monoatomic - leaving 11 for Mogul analysis.

In the following table, the Counts columns list the number of bonds (or angles) for which Mogul statistics could be retrieved, the number of bonds (or angles) that are observed in the model and the number of bonds (or angles) that are defined in the Chemical Component Dictionary. The Link column lists molecule types, if any, to which the group is linked. The Z score for a bond length (or angle) is the number of standard deviations the observed value is removed from the expected value. A bond length (or angle) with  $|Z| > 2$  is considered an outlier worth inspection. RMSZ is the root-mean-square of all Z scores of the bond lengths (or angles).

Mol	Type	Chain	Res	Link	Bond lengths			Bond angles		
					Counts	RMSZ	$\# Z  > 2$	Counts	RMSZ	$\# Z  > 2$
9	EDO	A	1021	-	3,3,3	0.35	0	2,2,2	0.37	0
3	NAG	A	1001	1	14,14,15	0.26	0	17,19,21	0.61	0
5	5GP	A	1008	-	18,25,26	1.04	2 (11%)	19,37,40	0.71	1 (5%)
9	EDO	A	1023	-	3,3,3	0.43	0	2,2,2	0.40	0
4	AMP	A	1007	6	22,25,25	0.76	0	25,38,38	1.05	2 (8%)
9	EDO	A	1020	-	3,3,3	0.46	0	2,2,2	0.24	0
3	NAG	A	1003	1	14,14,15	0.56	0	17,19,21	0.92	1 (5%)
9	EDO	A	1018	-	3,3,3	0.45	0	2,2,2	0.41	0
9	EDO	A	1022	-	3,3,3	0.50	0	2,2,2	0.07	0

Mol	Type	Chain	Res	Link	Bond lengths			Bond angles		
					Counts	RMSZ	# Z  > 2	Counts	RMSZ	# Z  > 2
9	EDO	A	1019	-	3,3,3	0.46	0	2,2,2	0.38	0
3	NAG	A	1002	1	14,14,15	0.32	0	17,19,21	1.16	1 (5%)

In the following table, the Chirals column lists the number of chiral outliers, the number of chiral centers analysed, the number of these observed in the model and the number defined in the Chemical Component Dictionary. Similar counts are reported in the Torsion and Rings columns. '-' means no outliers of that kind were identified.

Mol	Type	Chain	Res	Link	Chirals	Torsions	Rings
9	EDO	A	1021	-	-	0/1/1/1	-
3	NAG	A	1001	1	-	2/6/23/26	0/1/1/1
5	5GP	A	1008	-	-	0/3/25/26	0/3/3/3
9	EDO	A	1023	-	-	0/1/1/1	-
4	AMP	A	1007	6	-	0/6/26/26	0/3/3/3
9	EDO	A	1020	-	-	0/1/1/1	-
3	NAG	A	1003	1	-	2/6/23/26	0/1/1/1
9	EDO	A	1018	-	-	0/1/1/1	-
9	EDO	A	1022	-	-	0/1/1/1	-
9	EDO	A	1019	-	-	0/1/1/1	-
3	NAG	A	1002	1	-	2/6/23/26	0/1/1/1

All (2) bond length outliers are listed below:

Mol	Chain	Res	Type	Atoms	Z	Observed(Å)	Ideal(Å)
5	A	1008	5GP	C5-C6	-2.55	1.42	1.47
5	A	1008	5GP	C8-N7	-2.45	1.30	1.35

All (5) bond angle outliers are listed below:

Mol	Chain	Res	Type	Atoms	Z	Observed(°)	Ideal(°)
3	A	1002	NAG	C1-O5-C5	3.87	117.44	112.19
3	A	1003	NAG	C1-O5-C5	3.27	116.63	112.19
4	A	1007	AMP	O3P-P-O2P	2.33	116.55	107.64
4	A	1007	AMP	C5-C6-N6	2.33	123.89	120.35
5	A	1008	5GP	O6-C6-C5	2.02	128.32	124.37

There are no chirality outliers.

All (6) torsion outliers are listed below:

Mol	Chain	Res	Type	Atoms
3	A	1002	NAG	O5-C5-C6-O6
3	A	1002	NAG	C4-C5-C6-O6
3	A	1001	NAG	C4-C5-C6-O6
3	A	1001	NAG	O5-C5-C6-O6
3	A	1003	NAG	C4-C5-C6-O6
3	A	1003	NAG	O5-C5-C6-O6

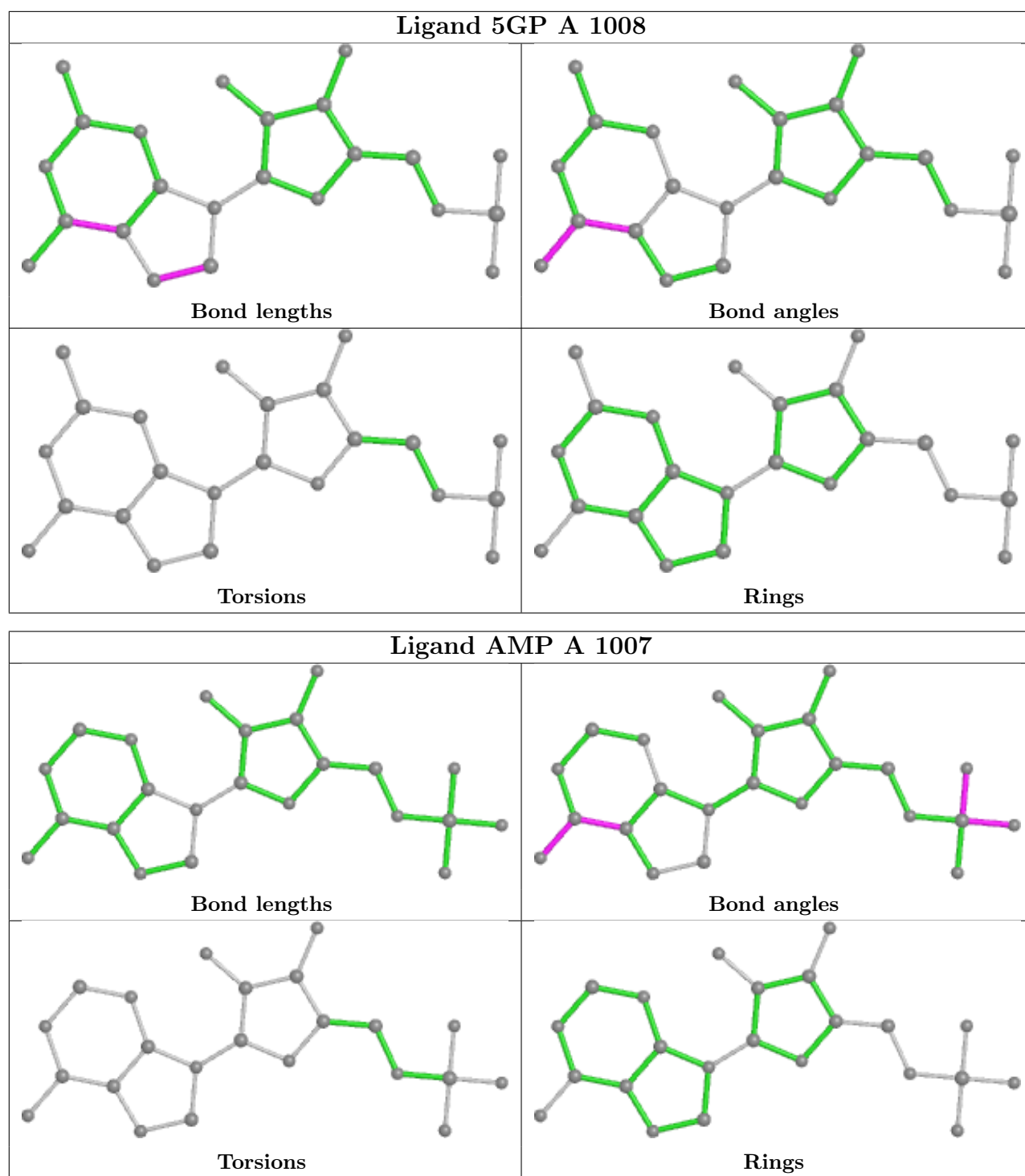
There are no ring outliers.

4 monomers are involved in 8 short contacts:

Mol	Chain	Res	Type	Clashes	Symm-Clashes
9	A	1021	EDO	3	0
5	A	1008	5GP	2	0
4	A	1007	AMP	2	0
9	A	1022	EDO	1	0

The following is a two-dimensional graphical depiction of Mogul quality analysis of bond lengths, bond angles, torsion angles, and ring geometry for all instances of the Ligand of Interest. In addition, ligands with molecular weight > 250 and outliers as shown on the validation Tables will also be included. For torsion angles, if less than 5% of the Mogul distribution of torsion angles is within 10 degrees of the torsion angle in question, then that torsion angle is considered an outlier. Any bond that is central to one or more torsion angles identified as an outlier by Mogul will be highlighted in the graph. For rings, the root-mean-square deviation (RMSD) between the ring in question and similar rings identified by Mogul is calculated over all ring torsion angles. If the average RMSD is greater than 60 degrees and the minimal RMSD between the ring in question and any Mogul-identified rings is also greater than 60 degrees, then that ring is considered an outlier. The outliers are highlighted in purple. The color gray indicates Mogul did not find sufficient equivalents in the CSD to analyse the geometry.





## 5.7 Other polymers [i](#)

There are no such residues in this entry.

## 5.8 Polymer linkage issues ⓘ

There are no chain breaks in this entry.

## 6 Fit of model and data [i](#)

### 6.1 Protein, DNA and RNA chains [i](#)

In the following table, the column labelled ‘#RSRZ> 2’ contains the number (and percentage) of RSRZ outliers, followed by percent RSRZ outliers for the chain as percentile scores relative to all X-ray entries and entries of similar resolution. The OWAB column contains the minimum, median, 95<sup>th</sup> percentile and maximum values of the occupancy-weighted average B-factor per residue. The column labelled ‘Q< 0.9’ lists the number of (and percentage) of residues with an average occupancy less than 0.9.

Mol	Chain	Analysed	<RSRZ>	#RSRZ>2	OWAB(Å <sup>2</sup> )	Q<0.9
1	A	726/738 (98%)	0.01	15 (2%) 63 59	21, 39, 69, 93	0

All (15) RSRZ outliers are listed below:

Mol	Chain	Res	Type	RSRZ
1	A	677	PHE	4.3
1	A	601	THR	3.7
1	A	616	ILE	3.6
1	A	851	GLY	3.5
1	A	617	LYS	3.4
1	A	850	HIS	3.1
1	A	611	PRO	3.0
1	A	619	PHE	2.6
1	A	728	VAL	2.5
1	A	189	PHE	2.4
1	A	618	ASP	2.3
1	A	629	ASP	2.2
1	A	731	HIS	2.1
1	A	711	SER	2.1
1	A	855	SER	2.0

### 6.2 Non-standard residues in protein, DNA, RNA chains [i](#)

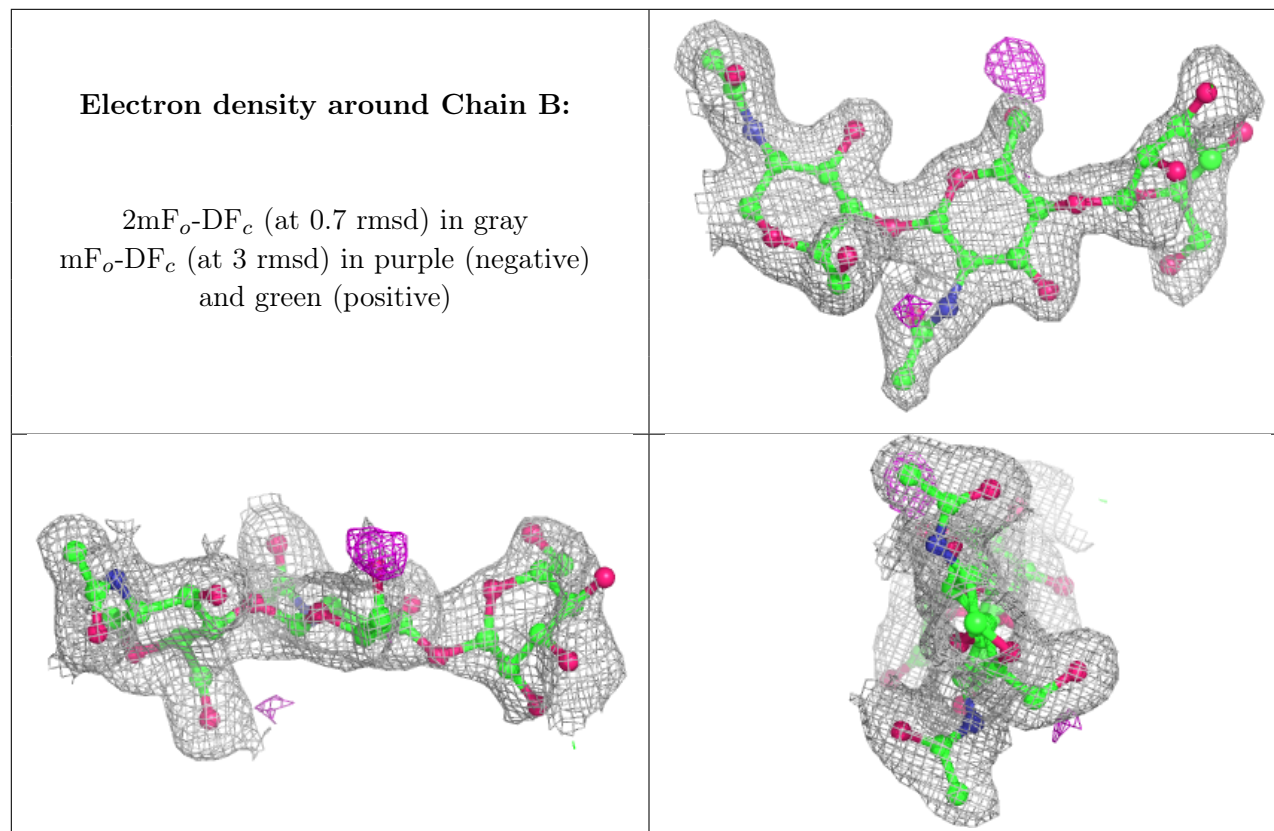
There are no non-standard protein/DNA/RNA residues in this entry.

### 6.3 Carbohydrates [i](#)

In the following table, the Atoms column lists the number of modelled atoms in the group and the number defined in the chemical component dictionary. The B-factors column lists the minimum, median, 95<sup>th</sup> percentile and maximum values of B factors of atoms in the group. The column labelled ‘Q< 0.9’ lists the number of atoms with occupancy less than 0.9.

Mol	Type	Chain	Res	Atoms	RSCC	RSR	B-factors( $\text{\AA}^2$ )	Q<0.9
2	MAN	B	3	11/12	0.69	0.23	70,74,76,77	0
2	NAG	B	2	14/15	0.89	0.12	36,44,54,64	0
2	NAG	B	1	14/15	0.97	0.09	21,26,28,31	0

The following is a graphical depiction of the model fit to experimental electron density for oligosaccharide. Each fit is shown from different orientation to approximate a three-dimensional view.



## 6.4 Ligands ⓘ

In the following table, the Atoms column lists the number of modelled atoms in the group and the number defined in the chemical component dictionary. The B-factors column lists the minimum, median, 95<sup>th</sup> percentile and maximum values of B factors of atoms in the group. The column labelled 'Q< 0.9' lists the number of atoms with occupancy less than 0.9.

Mol	Type	Chain	Res	Atoms	RSCC	RSR	B-factors( $\text{\AA}^2$ )	Q<0.9
3	NAG	A	1002	14/15	0.74	0.25	45,56,58,62	0
3	NAG	A	1001	14/15	0.80	0.17	50,60,63,65	0
5	5GP	A	1008	23/24	0.86	0.25	46,76,82,82	0
9	EDO	A	1020	4/4	0.86	0.24	44,44,48,49	0
9	EDO	A	1022	4/4	0.87	0.18	49,49,50,51	0
9	EDO	A	1023	4/4	0.88	0.15	54,55,55,56	0

*Continued on next page...*

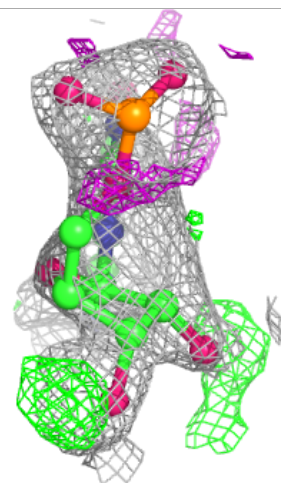
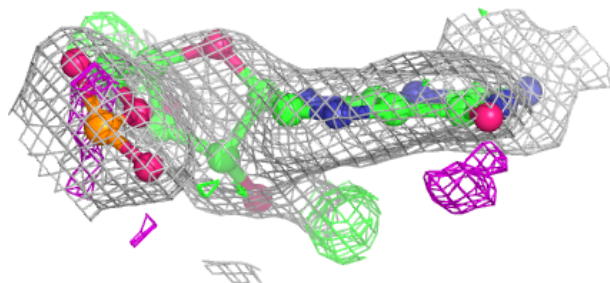
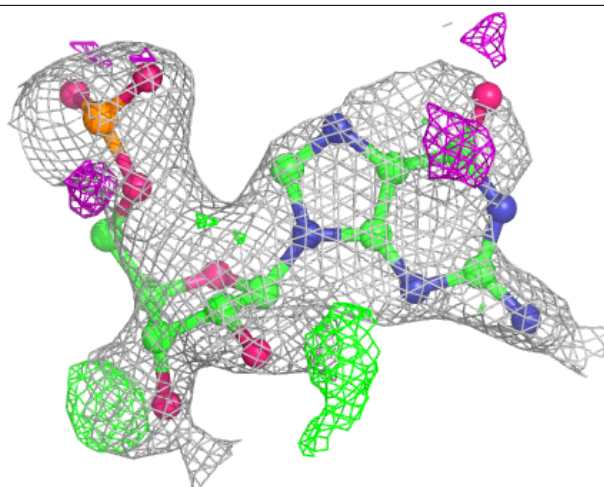
*Continued from previous page...*

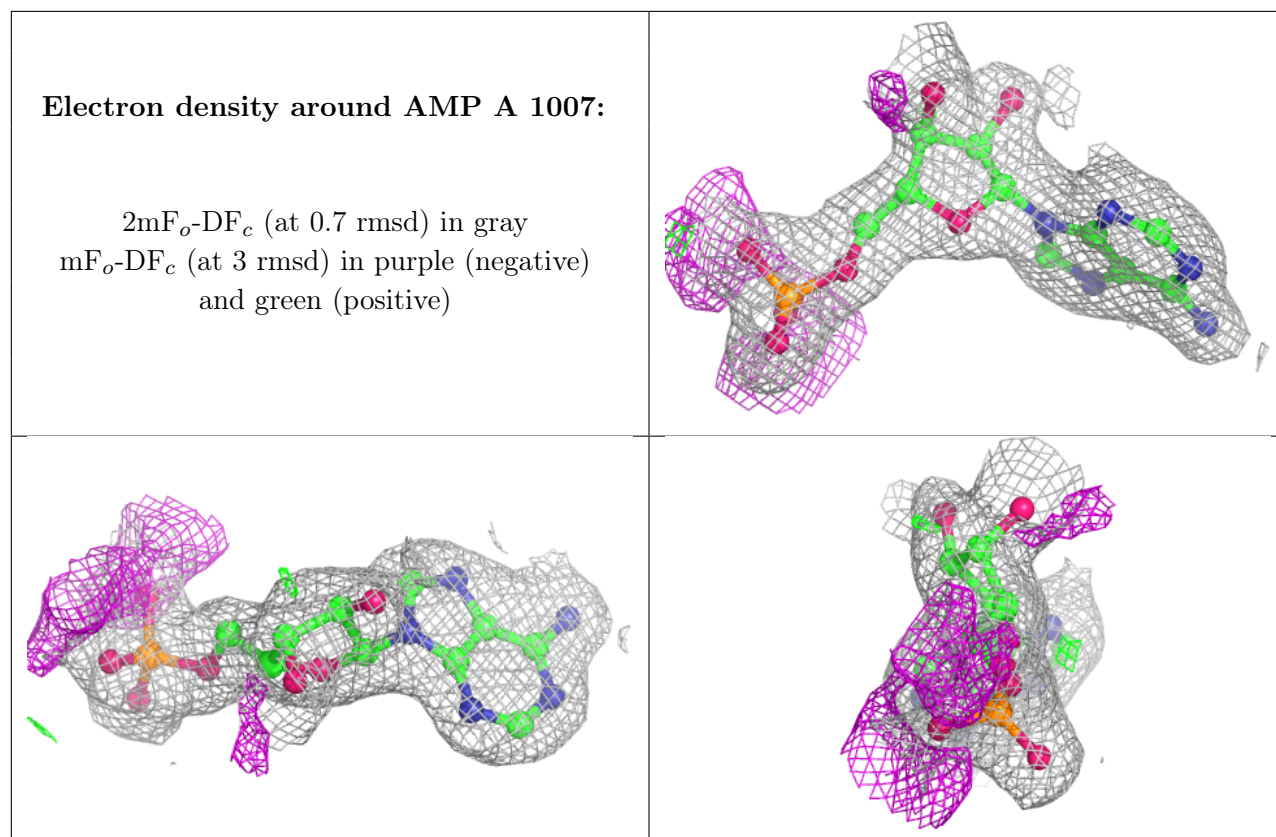
Mol	Type	Chain	Res	Atoms	RSCC	RSR	B-factors( $\text{\AA}^2$ )	Q<0.9
3	NAG	A	1003	14/15	0.89	0.13	28,31,40,48	0
4	AMP	A	1007	23/23	0.92	0.11	28,32,40,42	0
8	CL	A	1017	1/1	0.94	0.10	41,41,41,41	0
9	EDO	A	1018	4/4	0.94	0.14	29,32,33,38	0
9	EDO	A	1019	4/4	0.94	0.10	36,40,40,43	0
8	CL	A	1013	1/1	0.95	0.08	51,51,51,51	0
9	EDO	A	1021	4/4	0.96	0.16	37,39,43,47	0
8	CL	A	1016	1/1	0.97	0.15	36,36,36,36	0
6	ZN	A	1010	1/1	0.97	0.08	38,38,38,38	0
6	ZN	A	1009	1/1	0.98	0.06	32,32,32,32	0
8	CL	A	1014	1/1	0.98	0.15	36,36,36,36	0
8	CL	A	1015	1/1	0.99	0.22	31,31,31,31	0
7	CA	A	1011	1/1	0.99	0.10	31,31,31,31	0
8	CL	A	1012	1/1	0.99	0.10	38,38,38,38	0

The following is a graphical depiction of the model fit to experimental electron density of all instances of the Ligand of Interest. In addition, ligands with molecular weight > 250 and outliers as shown on the geometry validation Tables will also be included. Each fit is shown from different orientation to approximate a three-dimensional view.

**Electron density around 5GP A 1008:**

$2mF_o-DF_c$  (at 0.7 rmsd) in gray  
 $mF_o-DF_c$  (at 3 rmsd) in purple (negative)  
and green (positive)





## 6.5 Other polymers [i](#)

There are no such residues in this entry.